

ROUND PLASTIC FIT

ALLPROOF
INDUSTRIES

DP350x200R

350R X 200D

Riser Adds up to
17 Litres

DP350x700RS

350W X 700D

45 Litres

Includes:
1x DPS100

DP350x700RS2

350W X 700D

45 Litres

Includes:
2x DPS100, PVC
Half Syphon &
Overflow Cap



Compliant
with E1/AS1
Clause 3.6

allproof.com

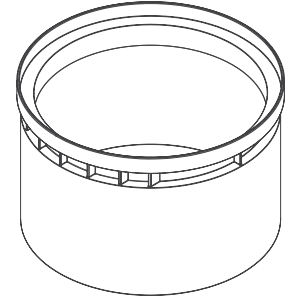
ROUND PLASTIC PIT

FEATURES:

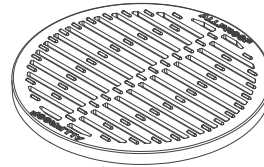
- > Manufactured from durable plastic
- > Round cast iron grate
- > 350x200mm riser provides total 900mm depth & 60L capacity
- > Pre-cut holes for storm water connection when seal included
- > DP350X700RS2 includes half syphon with removable access cap
- > 300mm sediment catchment
- > 100mm Drainage pit seal
- > Compliant with E1/AS1 clause 3.6



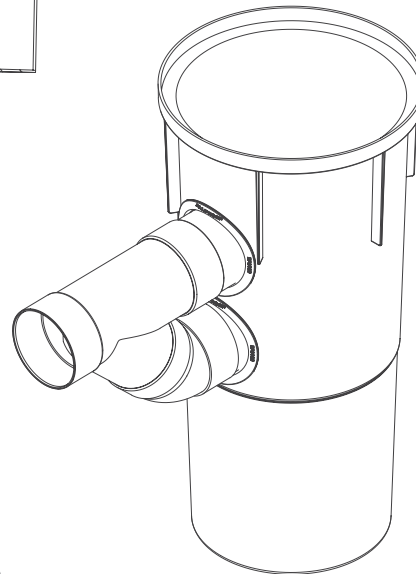
DPS100



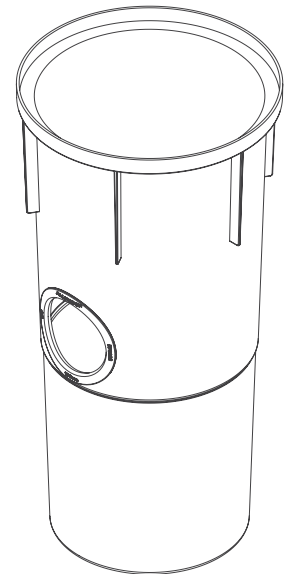
DP350X200R



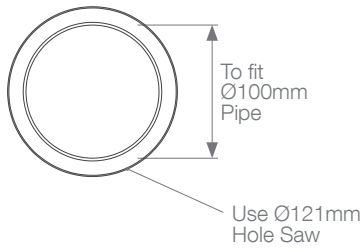
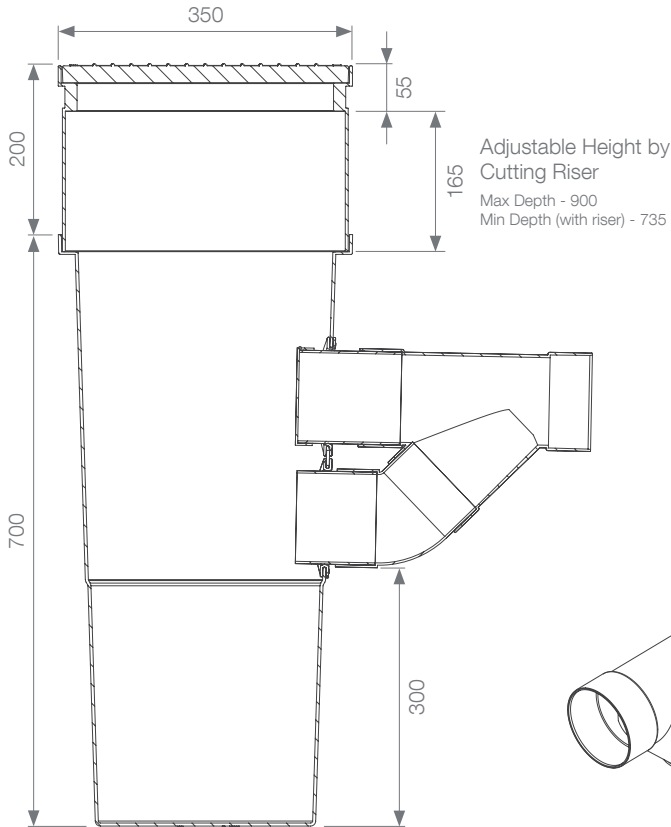
350HCI RD



DP350X700RS2



DP350X700RS



CODES:

Code	Description
DP350X700R	Drainage Pit 350 X 700 Round
DP350X700RS	Drainage Pit 350 X 700 Round With Seal
DP350X700RS2	Drainage Pit 350x700 Rnd With 2 Outlets, 2x Seals and Half Syphon with Overflow Cap
DP350X200R	Drainage Pit 350 X 200 Riser Round
350HCI RD	350x350mm Heelproof CI Grate Round
DPS100	100mm Drainage Pit Seal

GRATE:



Heelproof Cast Iron
Load Class Rating: **B**



ALL0050