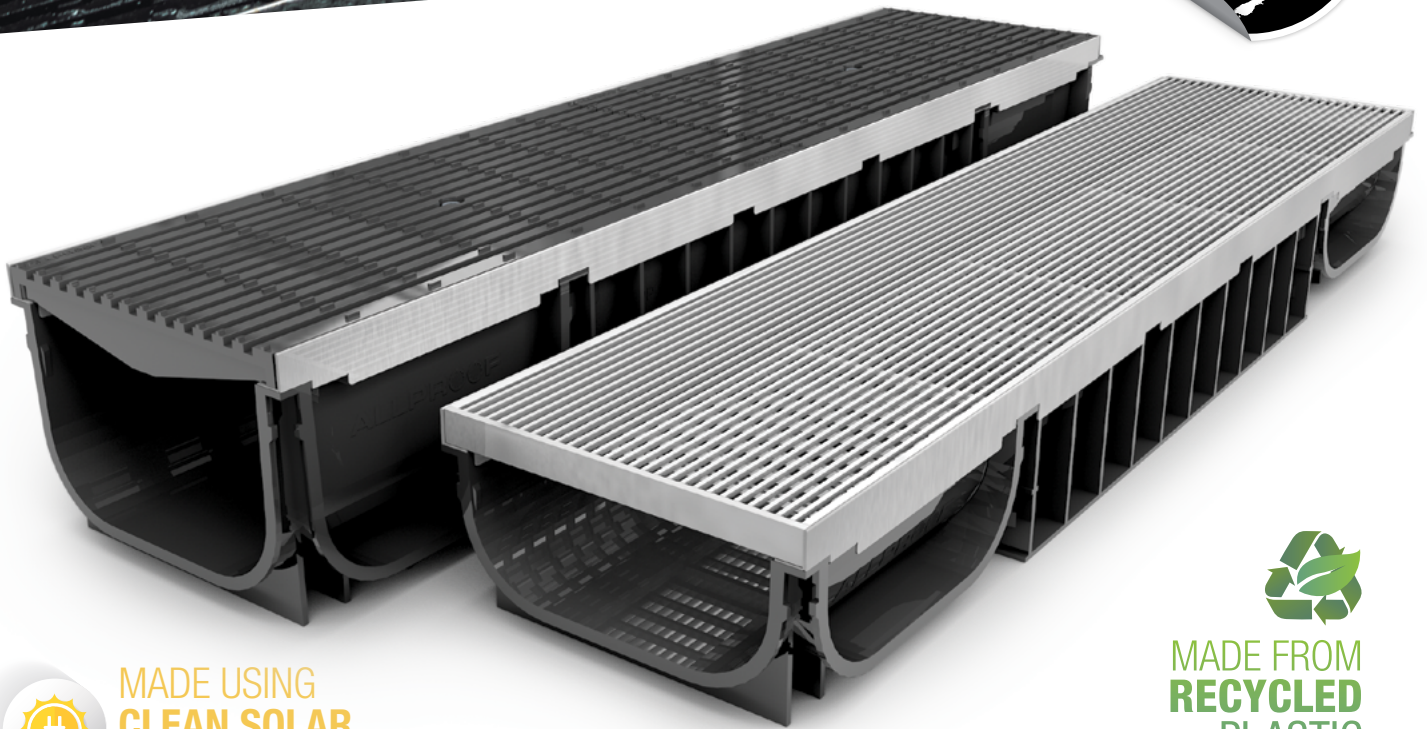


200MM COMMERCIAL CHANNEL



MADE USING
**CLEAN SOLAR
ENERGY**



MADE FROM
**RECYCLED
PLASTIC**

Allproof Plastic Commercial Channel

- > 150mm and 100mm internal depths
- > 200mm internal clear opening
- > Plastic, stainless steel and cast iron grates
- > Stainless steel edge rails
- > Optional channel levelling rebar clips available
- > Load class tested
- > Easy clip and connect joints
- > Made from recycled polypropylene
- > Made in New Zealand

Inline sump available,
see allproof.com



200MM COMMERCIAL CHANNEL

GRATES

Heelproof Cast Iron (HCI)

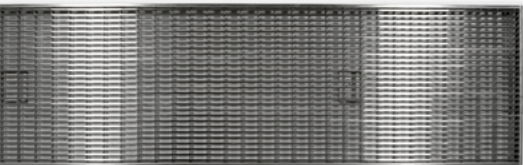


Open Area: 31%
Standard Lengths: 500mm

*Note Cast Iron Grates supplied painted black. Oxidisation can occur naturally, is aesthetic, and will not impact on grate performance.



Wedge Wire (WW)



Open Area: 54%
Standard Lengths: 1000mm
316 Stainless Steel

*Load class B as standard, classes C - D available on request.



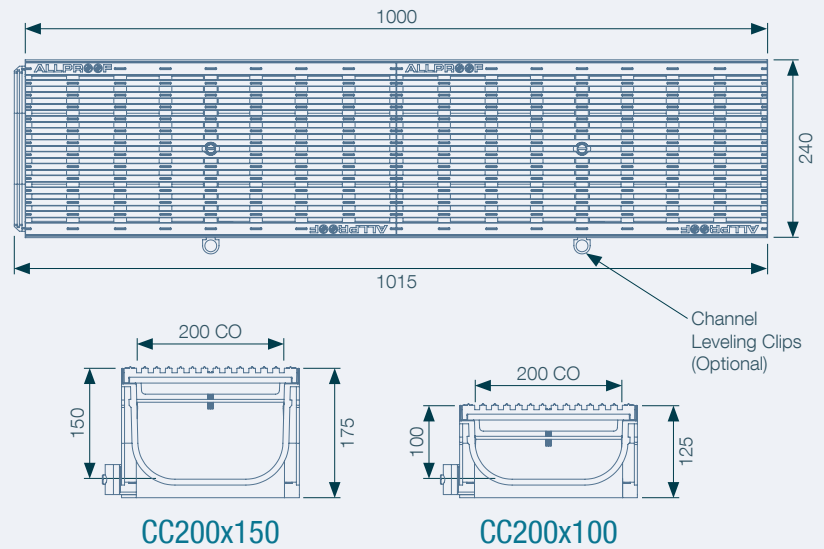
Plastic (GFP)



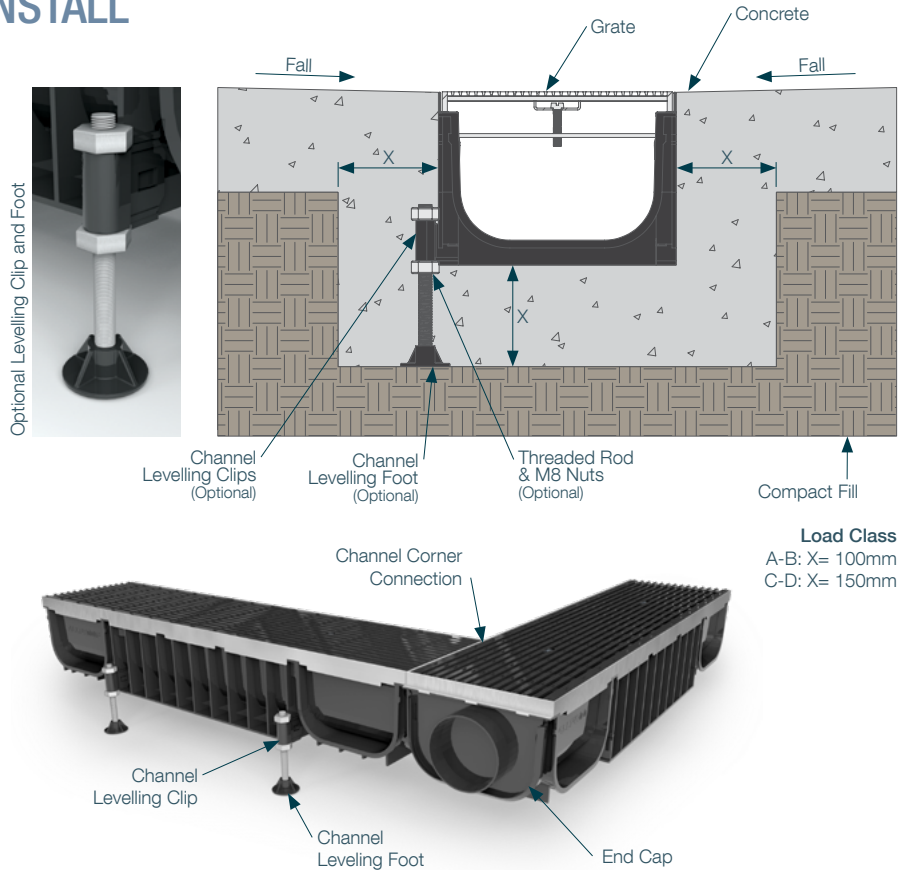
Open Area: 33%
Standard Lengths: 500mm



SPECS



INSTALL



CODES

100mm Depth	
Code	Description
CC200x100HCI	200x100mm Channel and HCI Grate
CC200x100GFP	200x100mm Channel and GFP Grate
CC200x100WW B	200x100mm Channel and WW Grate
CC200x100EC	200x100mm Channel End Cap

Channel Levelling Clips	
Code	Description
CLC01	Channel levelling clip
CLF01	Channel levelling foot

*Note cast iron grates should not be used in conjunction with asphalt, bitumen, acid washed surfaces or in marine environments as chemical reactions resulting in premature rust corrosion may occur.

150mm Depth	
Code	Description
CC200x150HCI	200x150mm Channel and HCI Grate
CC200x150GFP	200x150mm Channel and GFP Grate
CC200x150WW B	200x150mm Channel and WW Grate
CC200x150EC	200x150mm Channel End Cap

Inline Sump	
Code	Description
CC200SUMPHCI	CC200 Inline sump SS Edge HCI grate
CC200SUMPGFP	CC200 Inline sump SS Edge GFP grate
CC200SUMPWW	CC200 Inline sump SS Edge WW grate