

Humes Cycle Friendly Class D Grate

Product Description

Stormwater Grate set 675 x 450 opening, cycle friendly

Product Certification

Grates and frames are certified to AS3996:2019 by SAI Global
License SMKP21437
Certificate available upon request or from www.standardmark.com

Load Classification

AS3996:2019 Class D
Suitable for major roads, including freeway and motorway shoulders, warehouses and loading docks.

Nominal Wheel Loadings: 8,000kg
Serviceability design load: 160kN
Ultimate limit state design load: 240kN

Bicycle Safety

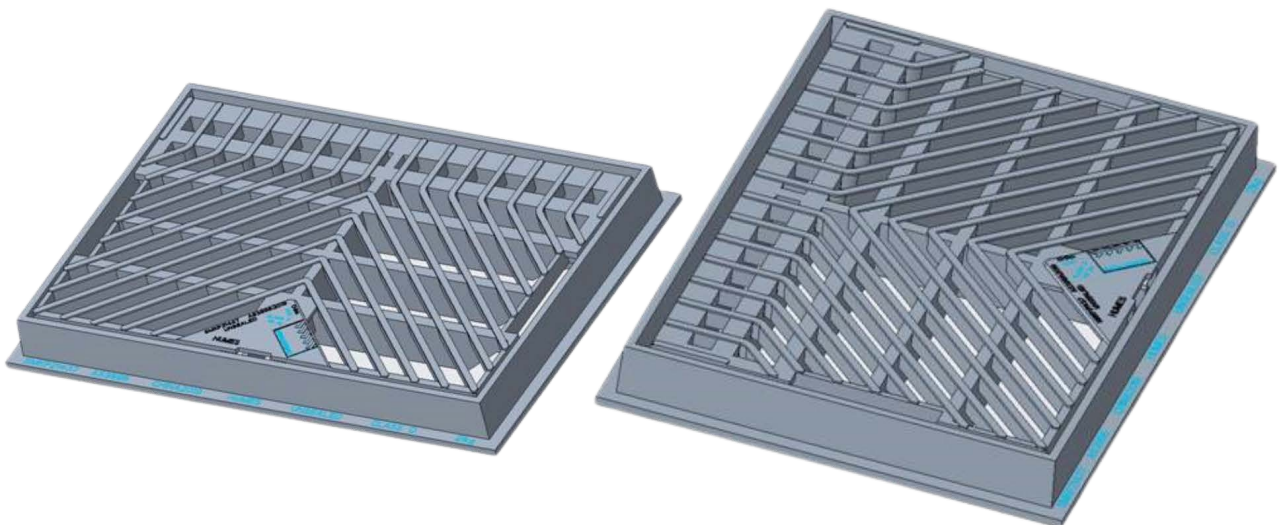
Meets Bicycle Tyre Penetration Resistance Requirement as per AS3996:2019
Clause 3.3.7 for all directions.

Material

Frame: Ductile Iron AS1831 Grade 500/7



**Australian
Standard**



Product Dimensions

Item Number	Opening Nominal (mm)	Frame Dimensions (mm)	Grate Size (mm)	Frame Depth (mm)	Lid Depth (mm)	Weight (Kg)
80082108	675 x 450	738 x 532	668 x 427	70	70	65

Freephone 0800 502112 www.humes.co.nz



Volumetric Flow Data:

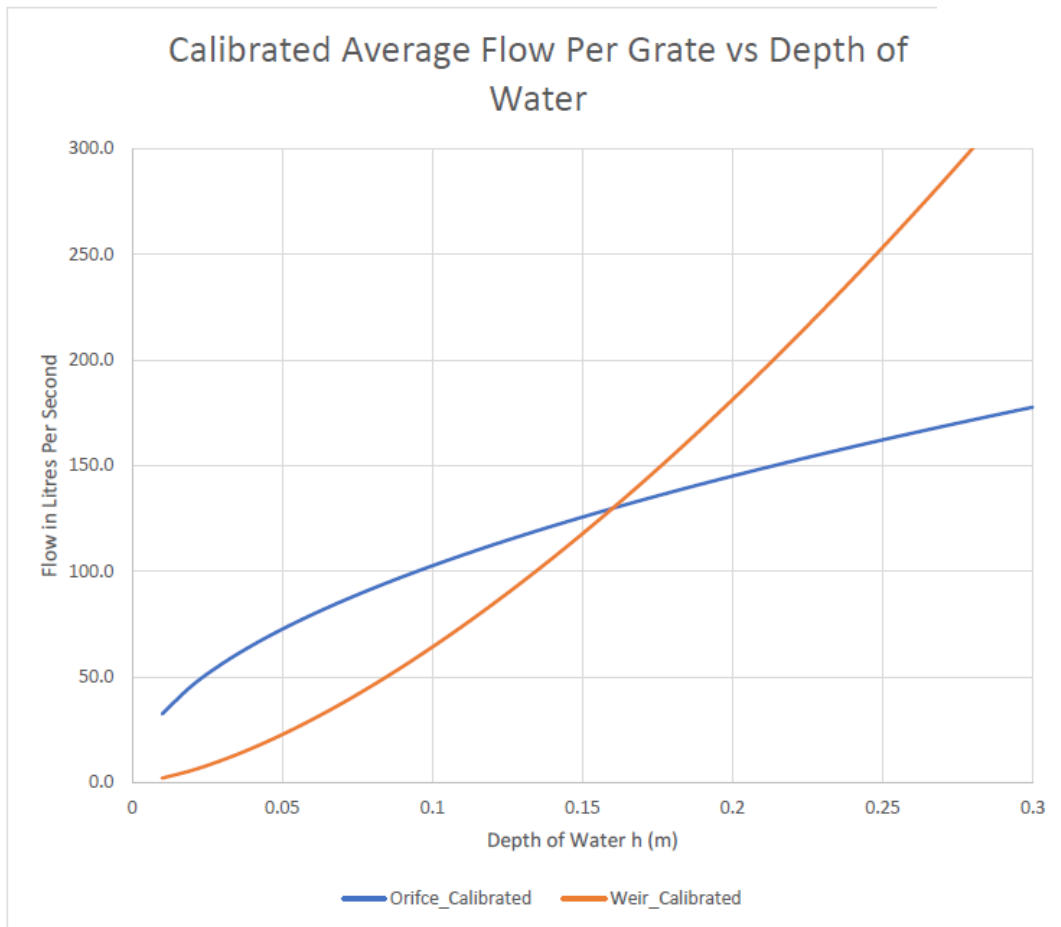


Table 2.1: Table showing the calibrated average flow capacities for the 675 mm x 450 mm stormwater rectangular grate at no blockage and 80% blockage

Depths of Water (mm)	Flow capacity (no Blockage) L/s	Flow capacity (80% Blockage) L/s
10	2.0	0.4
20	5.7	1.1
50	22.6	4.5
80	45.8	9.2
100	64.0	12.8
120	84.2	16.8
150	117.6	23.5
180	137.6	27.5
200	145.0	29.0
250	162.1	32.4
300	177.6	35.5

Compliant with Auckland Transport Unauthorised Access requirements
 Compliant with Auckland Transport Maintenance access opening force requirements



Item 80082108 – AS3996 Stormwater Grate Set 675mm Opening

