



AVK BUTTERFLY VALVE PN10

954/00



Double eccentric resilient seated butterfly valve, PN10
Designed according to EN 593 and EN 12266
DN2400 to DN2800 large diameter



Use:

- For water and neutral liquid applications
 - Valve designed for use up to 60°C
- Note: Always observe pipe material recommended operating temperatures



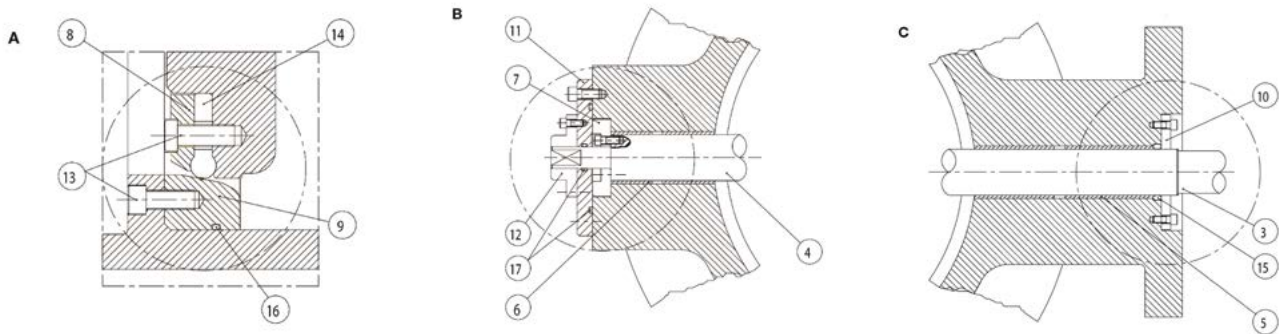
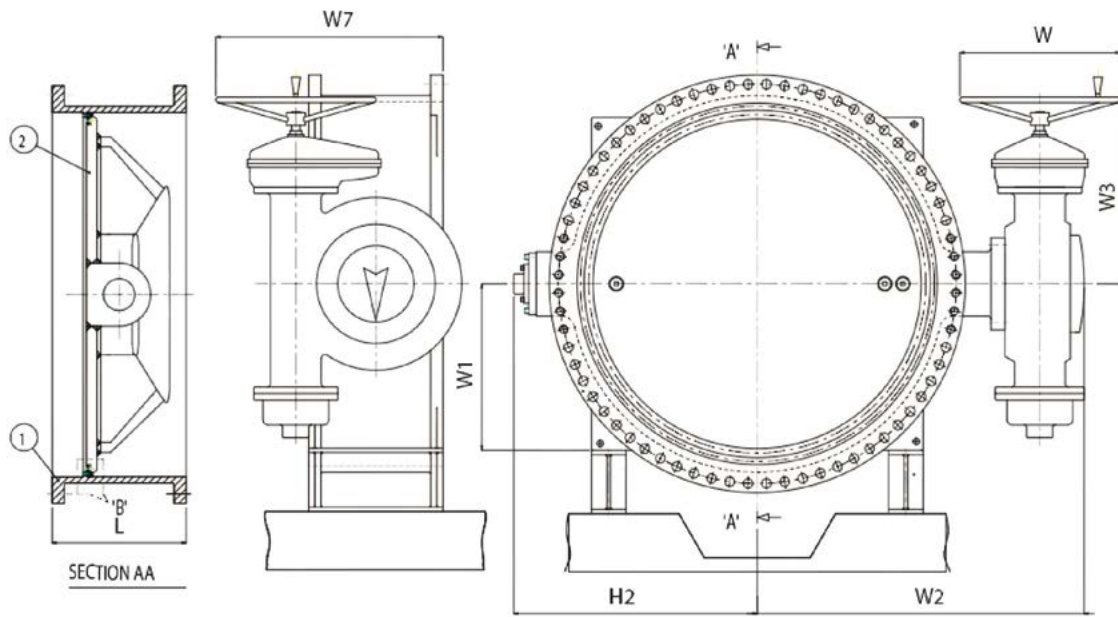
Tests:

- Seat: 11 bar (1.1 x AOP)
- Body: 15 bar (1.5 x AOP)
- Function test: 1 x open/close (under no flow or pressure)

Optional extras:

- Locking plate for externally locking of disc in closed position for maintenance
- 300 microns two pack epoxy coating
- AISI 316/ ASTM A351 Gr. CF8M trim
- PN6 pressure and flanging





Component list

1. Body	Ductile Iron ASTM A536 Gr. 65045-12	9. Seat ring	Stainless Steel ASTM A240 type 304
2. Disc	Ductile Iron ASTM A536 Gr. 65045-12	10. Gland plate	Carbon Steel ASTM A36
3. Drive shaft	ASTM A479 Type 410	11. End cover plate	Carbon Steel ASTM A36
4. Stub shaft	ASTM A479 Type 410	12. Disc locking plate	
5. Drive bearing bush		13. Allen screw	Stainless Steel ASTM A193 Gr. B8
6. Stub bearing bush		14. Valve seal	EPDM
7. Thrust pad	Leaded bronze BS 1400 LB 2	15. Gland plate o-ring	EPDM
8. Clamping ring/ segments	Stainless Steel ASTM A351 type CF 8 / CF 8M	16. O-ring for seat ring	EPDM
		17. End cover plate o-ring	EPDM

Components can be substituted with equivalent or higher class materials.

Reference nos. and dimensions

AVK ref. nos.	DN mm	L mm	H2 mm	W mm	W1 mm	W2 mm	W3 mm	W7 mm	Theoretical kilos
954-2400-00-99410219001	2400	760	1475	800	1055	1820	965	1180	22100
954-2600-00-99410219001	2600	760	1665	800	1152	1975	965	1180	22300
954-2800-00-99410219001	2800	760	1775	800	1234	2235	965	1180	25000