

**Universal end cap with rear and/or side tapping bosses**  
**For cast iron, ductile iron, steel, PVC-U, PVC-M, PVC-O, AC and copper pipes**

**Use:**

For water and sewage applications to max. 40°C  
 Angular deflection of ±4 degrees  
 16 bar / 160 metres allowable operating pressure (AOP)  
 Non tensile  
 This product provides no longitudinal joint restraint

**Options:**

Drilled and tapped 2" BSP side and rear bosses with one BSP plug supplied

**Materials:**

End cap, gland ring	Ductile iron, AS 1831 Gr. 400-12 min.
Coating	Fusion bonded epoxy to AS/NZS 4158
Rubber seals	Water: EPDM to AS 1646 AS/NSZ 4020 compliant
Nuts	SS 316, PTFE coated
Washers	SS 316
Bolts	SS 304
Cap	Plastic



AVK Australia's website contains the latest product information and data sheets.

Designs, materials and specifications shown are subject to change without notice due to our continuing program of product development.



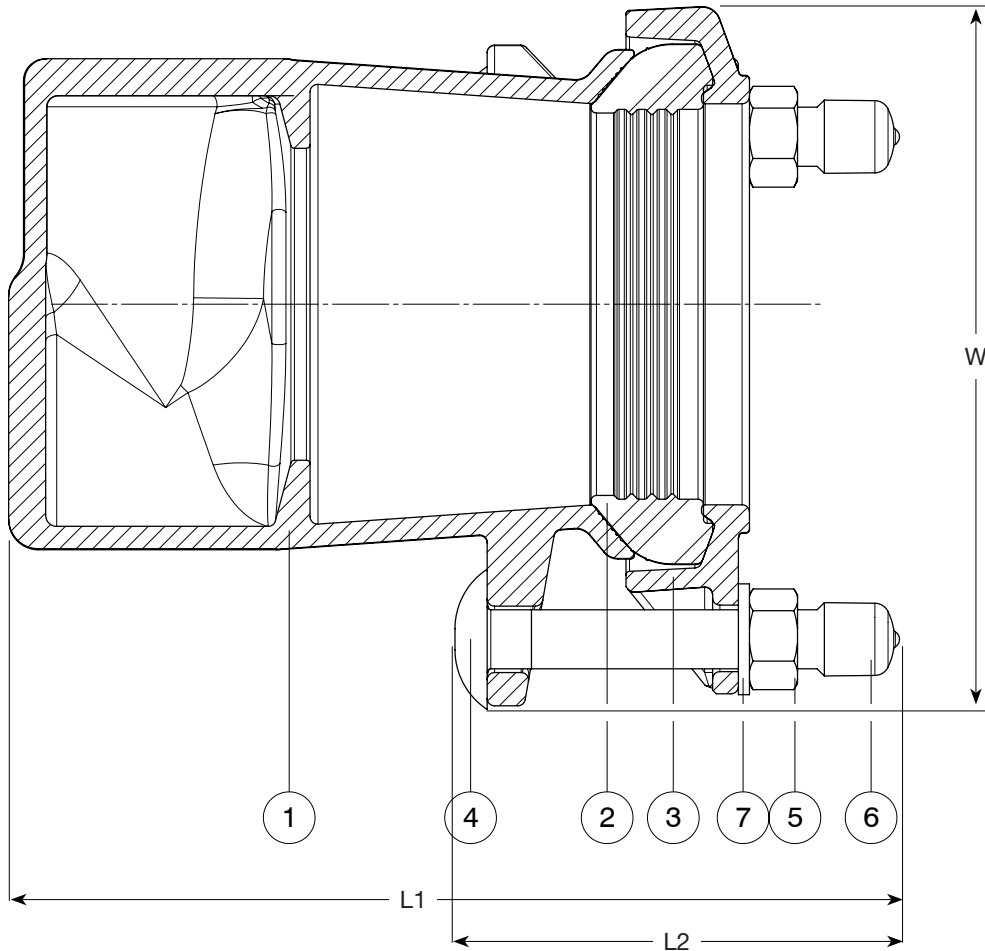
AVK Australia Pty Ltd  
 559A Grand Junction Road, Wingfield, SA 5013 Australia  
 Tel: +61 8 8368 0900  
 Fax: +61 8 8368 0970  
 E-mail: info@avkvalves.com.au  
 www.avkvalves.com.au  
 Copyright© AVK Group A/S 2010

3N605DQ  
 April 2010

Universal end cap with rear and/or side tapping bosses  
 For cast iron, ductile iron, steel, PVC-U, PVC-M, PVC-O, AC and copper pipes

**Component list**

- |                |           |
|----------------|-----------|
| 1. Body        | 5. Nut    |
| 2. Rubber seal | 6. Cap    |
| 3. Gland ring  | 7. Washer |
| 4. Bolt        |           |



Ref. nos.	Nominal pipe size		Sealing range	Weight kg	L1 mm	L2 mm	W mm
	inch.	mm					
605-106-04-30X12	3"	80	84 - 106	6.75	240	105	199.5
605-133-04-30X12	4"	100	109 - 133	7.90	245	105	229.5
605-183-04-30X12	6"	150	157 - 183	11.30	272	105	284.5

X: 0 = Bosses untapped  
 2 = Bosses tapped 2" BSP

Note: For end cap applications 8"/200mm and larger we recommend using a Series 603 flange adaptor combined with a blank flange.