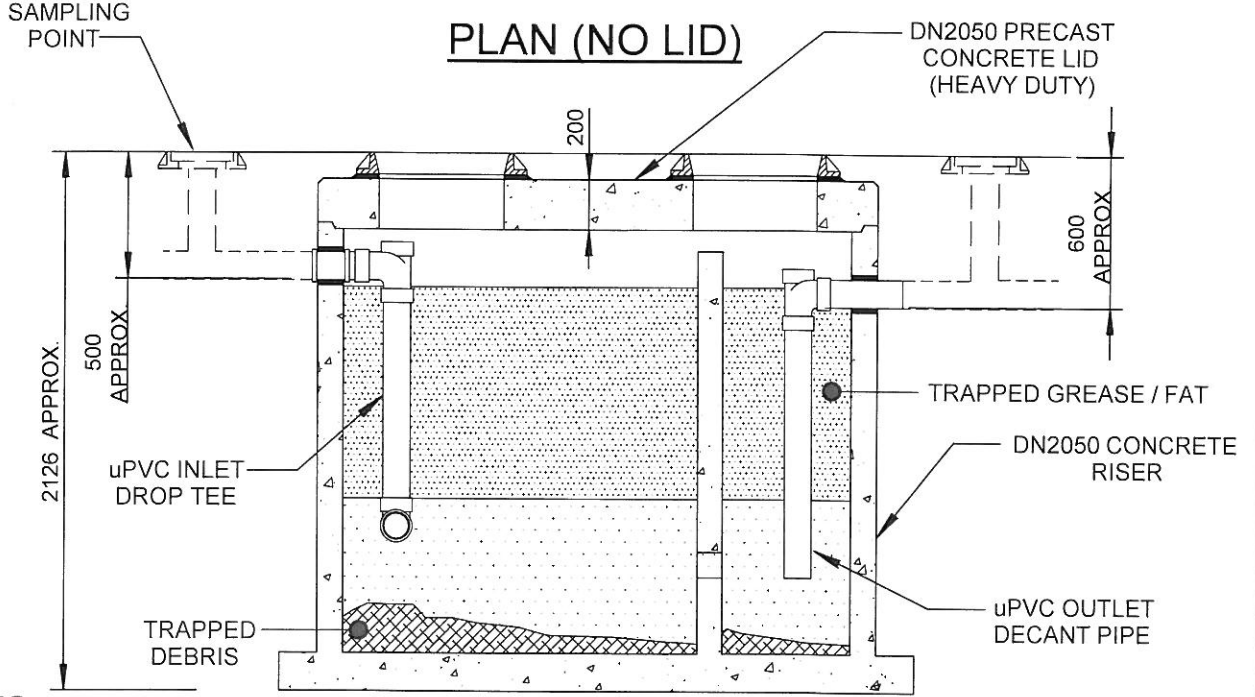
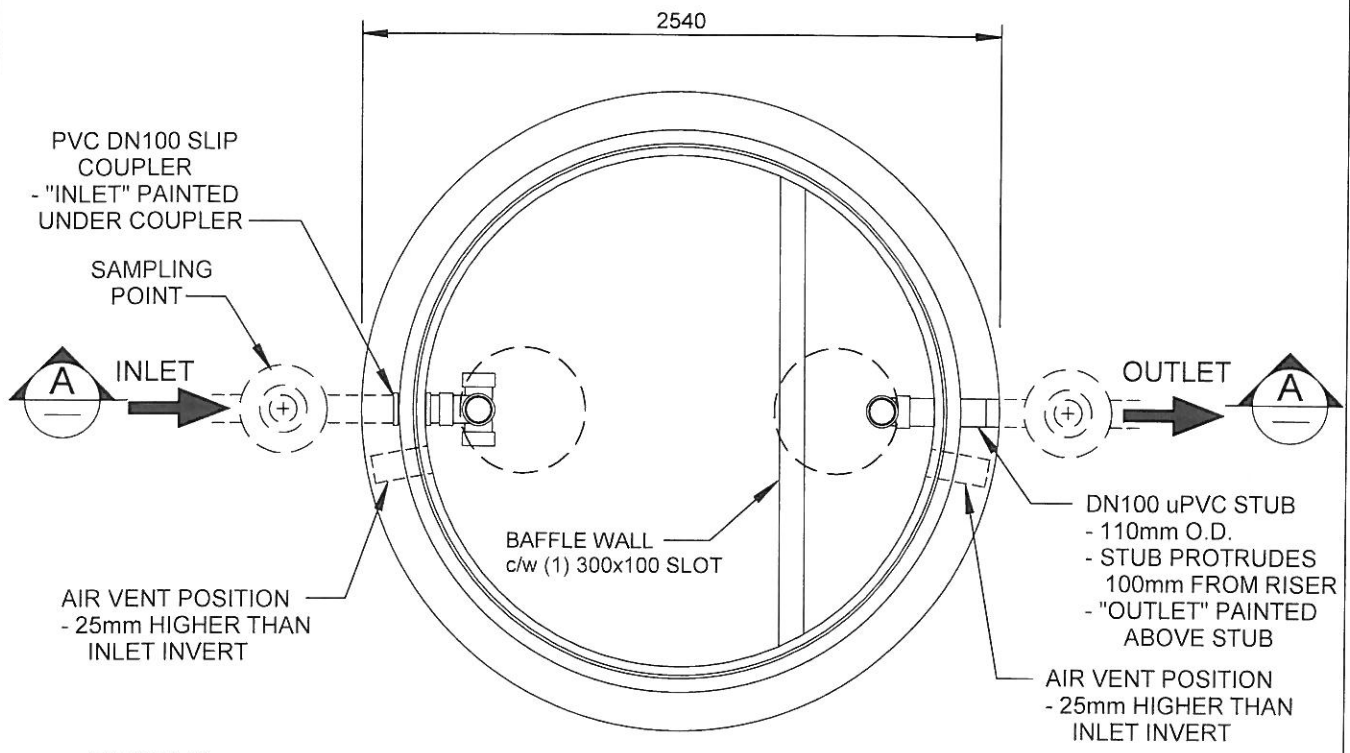


Issue	Date	Changes Made.
0	31-10-11	Original issue.



**PLAN (NO LID)**

**SECTION A-A**

**NOTES:**

1. SWIFTLIFT LIFTING ANCHORS PROVIDED ON ALL COMPONENTS
2. TOTAL MASS: 7.54 TONNES  
 BODY: 5.76 TONNES  
 CONC LID: 1.78 TONNES (INCL. CAST IRON COVERS & FRAMES)
3. LID DESIGN - HEAVY DUTY, 0.85HN VEHICLE LOADS
4. CAPACITY - 4,130 LITRES, DEFINED AS TANK VOLUME BELOW INVERT LEVEL OF OUTLET PIPE
5. GREASE STORAGE VOLUME - 3,570 LITRES, S.G. = 0.9



Humes Pipeline Systems  
 Private Bag 92817  
 Auckland  
 Freephone 0800 502 112  
 www.humes.co.nz

Copyright. This design, information and drawing remain the property of Humes Pipeline Systems and may not be used or copied without approval in writing from Humes Pipeline Systems

**GREASE INTERCEPTOR  
 MODEL GT4000  
 (HEAVY DUTY)  
 GENERAL ASSEMBLY DETAILS**

Drawn By	C THORPE	Date	31-10-2011
Checked By		Scale	1 : 30
Reference			
Drawing No.	HUMES 3048	Issue	0