



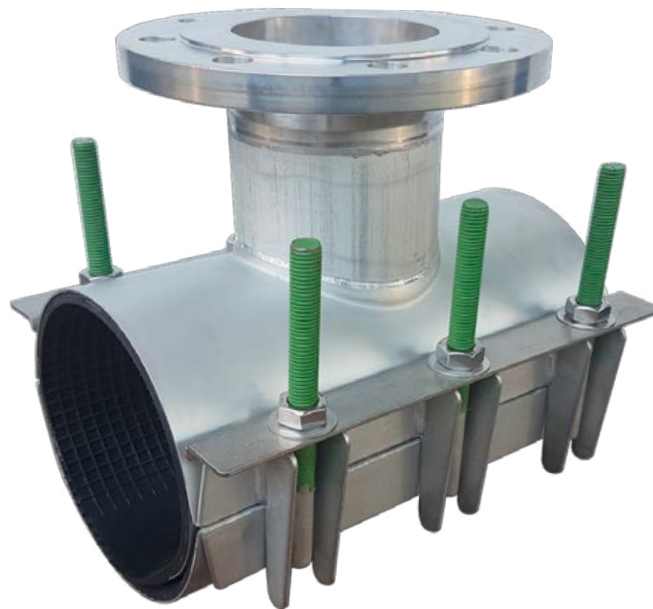
AVK DOUBLE BAND REPAIR CLAMP C/W OFFTAKE FLANGE TYPE 729/D2 TYPE FST-20

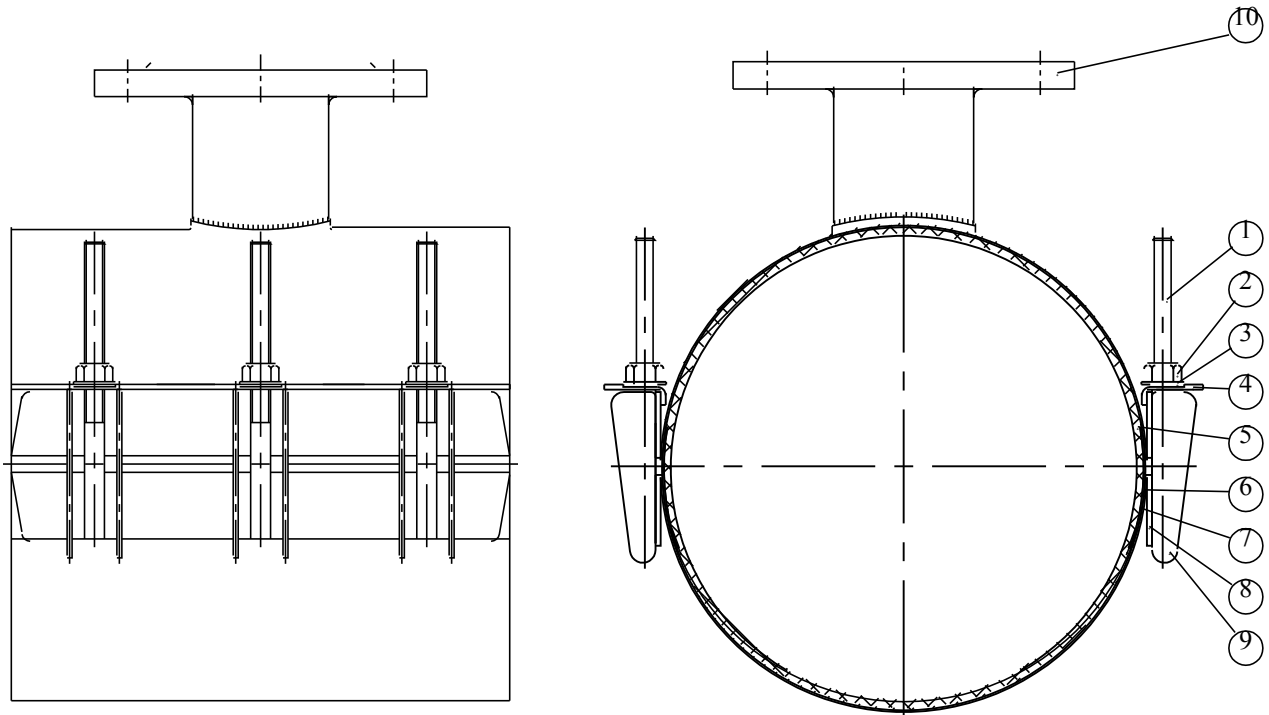
AVK repair clamps ensure a cost effective and reliable solution for quick repairs on steel, copper, asbestos cement, Cast Iron and plastic pipes. A pipe with a hole, crack or full fracture will be repaired permanently. The Stainless Steel repair clamps are passivated in order to ensure an optimum corrosion resistance. The repair clamps are provided with a waffle structured rubber gasket and rounded tops to create a fully circumferential seal.

Use: For water, sewage and neutral liquids to max. 70°C
Hydraulic tests: Body 1.2 x PN (type test only)
Applicable standards: Design to Manufacturer Standard and AS 4181
Indication pressure class for (waste)water: 16 bar for DN40 up to DN150, 10 bar for DN175 up to DN300 and 6 bar for DN350

Materials:

| | |
|----------------------------|--------------------------------------|
| Body | Stainless Steel Grade 316 |
| Clamp | Stainless Steel Grade 316 |
| Bridge | Stainless Steel Grade 316 |
| Ribs | Stainless Steel Grade 316 |
| Flange | Stainless Steel Grade 316 AS 4087 |
| Rubber lining | NBR or EPDM |
| Bolts | Stainless Steel 316 c/w PTFE coating |
| Nut | Stainless Steel Grade 316 |
| Washer | Stainless Steel Grade 316 |
| Bolt/ ribs interval | 50mm, 75mm or 100mm |





Component list

| | | | |
|-----------------------------|---------------------------|------------------|--------------------------------------|
| 1. Stud 316 Stainless Steel | Teflon Coated | 6. Body plate | Stainless Steel Grade 316 |
| 2. Nut | Stainless Steel Grade 316 | 7. Spanner plate | Stainless Steel Grade 316 |
| 3. Washer | Stainless Steel Grade 316 | 8. Side plate | Stainless Steel Grade 316 |
| 4. Bridge | Stainless Steel Grade 316 | 9. Ribs | Stainless Steel Grade 316 |
| 5. Rubber sealing | NBR or EPDM | 10. Flange | Stainless Steel Grade 316 to AS 4087 |

Components can be substituted with equivalent or higher class materials.