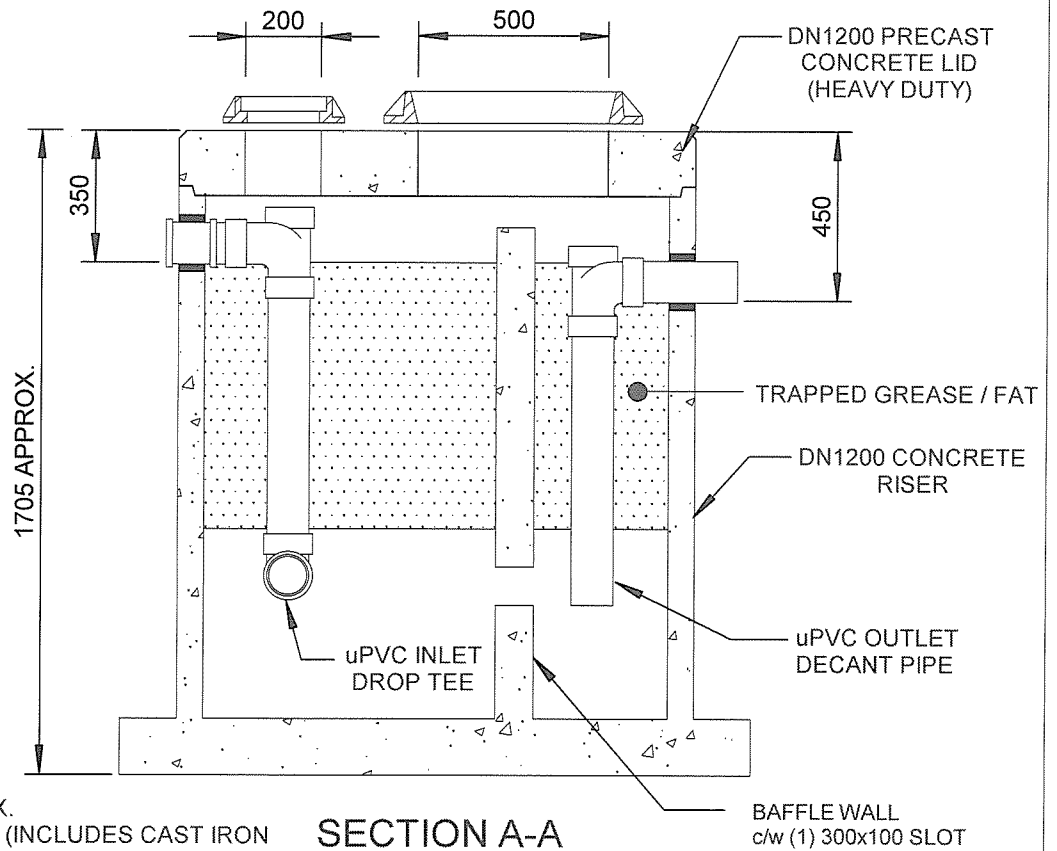


**PLAN (NO LID)**



**SECTION A-A**

**NOTES:**

1. SWIFTLIFT LIFTING ANCHORS PROVIDED;
2. MASS:  
BODY = 2,120 kg APPROX.  
LID = 630 kg APPROX. (INCLUDES CAST IRON COVERS & FRAMES)
3. HEAVY DUTY LID, 0.85HN LOAD.
4. CAPACITY: 1,163 LITRES, DEFINED AS TANK VOLUME BELOW OUTLET PIPE INVERT.
5. GREASE STORAGE VOLUME: 940 LITRES, S.G. = 0.9

**HUMES**  
Humes Pipeline Systems  
Private Bag 92817  
Auckland  
Freephone 0800 502 112  
www.humes.co.nz

**GREASE INTERCEPTOR  
MODEL GT1000  
(HEAVY DUTY)**

**GENERAL ASSEMBLY DETAILS**

Drawn By:	C THORPE	Date:	27-02-08
Checked By:		Scale:	1 : 20 (A4) (OR AS SHOWN)
Reference:			
Drawing No.:	HUMES 3009	Issue:	2