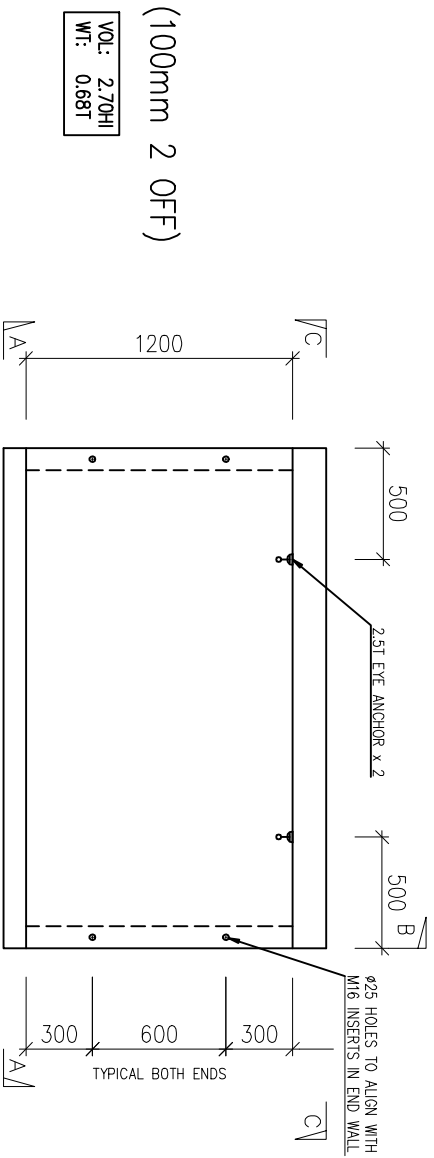
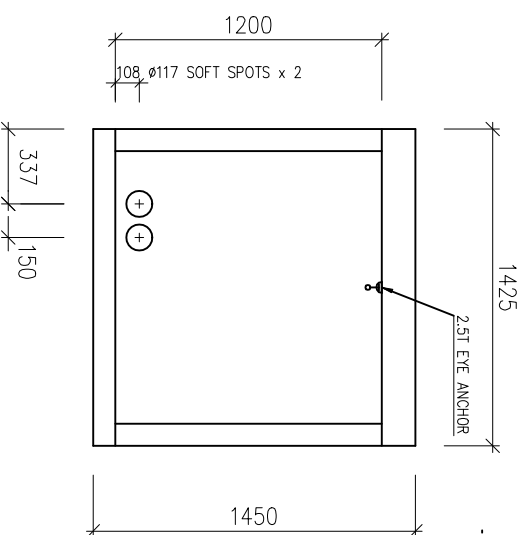
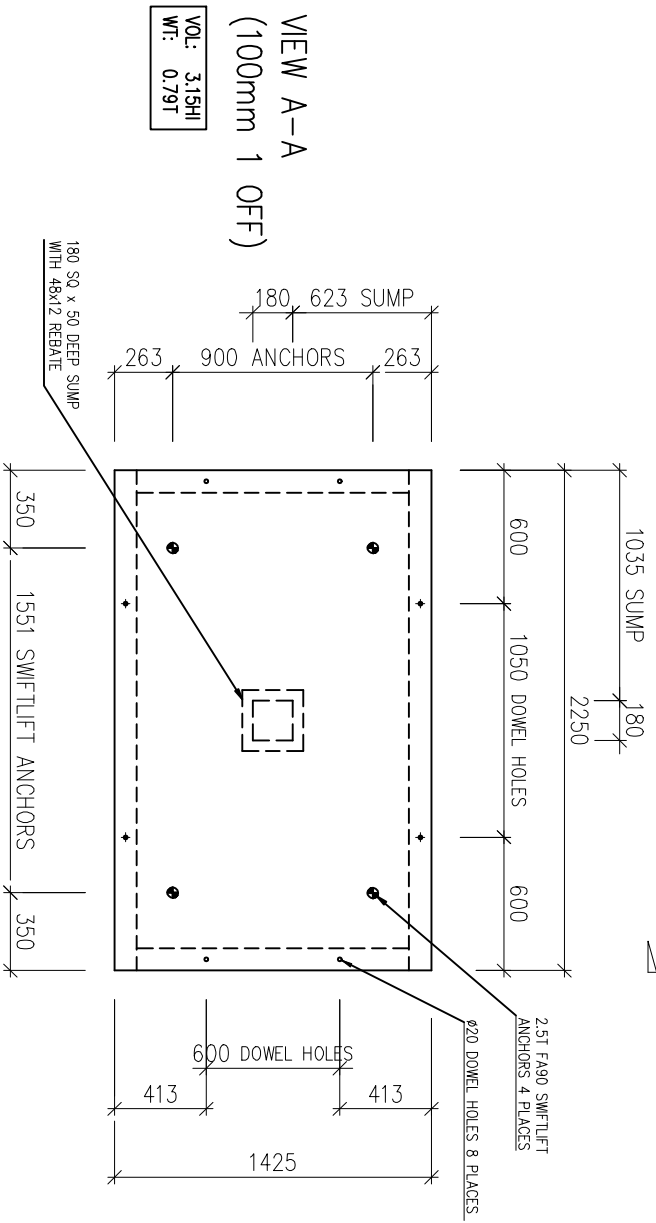


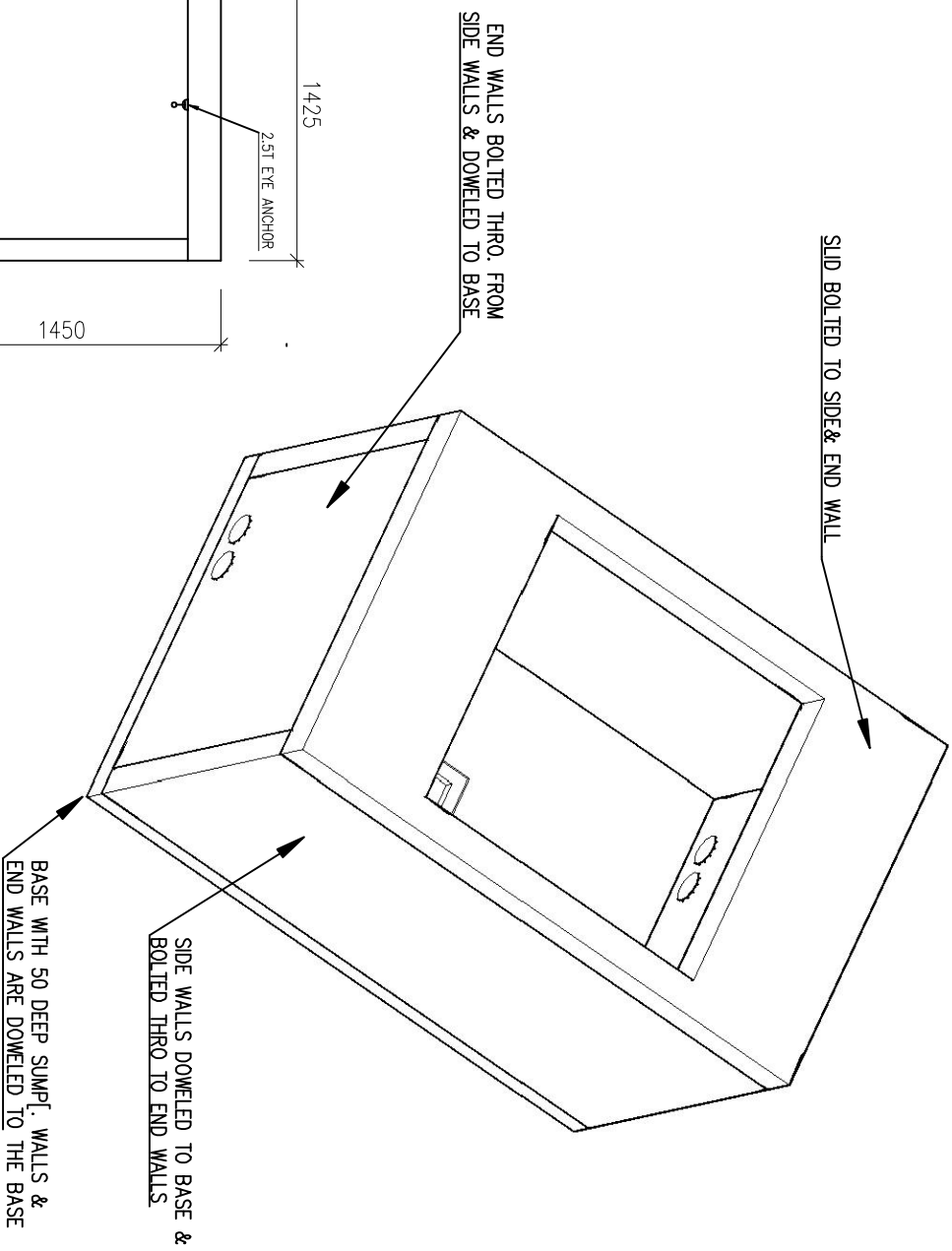
SIDE WALL (100mm 2 OFF)



VIEW A-A  
BASE (100mm 1 OFF)



VIEW B-B  
END WALL (100mm 2 OFF)



NOTES:

- 1 MANUFACTURE IN ACCORDANCE WITH NZS 3109:1997 ( PRECAST UNITS)
- 2 CONCRETE STRENGTH @ 28 DAYS 40MP<sub>a</sub>, MIN. STRIPPING STRENGTH 15MP<sub>a</sub>
- 3 REINFORCEMENT STEEL IN ACCORDANCE WITH NZS 3422 & NZS 3402 HD BARS = 430MP<sub>a</sub> & MESH = 485MP<sub>a</sub>
- 4 SURFACE FINISHES TO NZS 3114:1987, FORMED SURFACE - F4 FINISH & TROWELLED SURFACE - U2 FINISH
- 5 ALL JOINTS TO BE EPOXIED
- 6 FOR LIFTING OF COMPLETE UNIT (EXCLUDING LID) A FOUR POINT EQUALESD SYSTEM USING THE 5T FA120 ANCHORS ONLY SHOULD BE USED



**Humes Pipeline Systems**  
Private Bag 92817  
Auckland  
Freephone 0800 502 112  
www.humes.co.nz

Copyright: This design, information and drawing remain the property of Humes Pipeline Systems and may not be used or copied without approval in writing from Humes Pipeline Systems.

Contractor  
**HUMES**

PHONE  
WWW.

Rev	Description	Date	By	Chkd
A	FOR APPROVAL FOR CONSTRUCTION	22-08-08	GB	-
B	FOR CONSTRUCTION	22-08-08	GB	-

Date	By	Chkd
22-08-08	GB	-
22-08-08	GB	-

Product INSPEC. CHAMBER  
Code 04699  
Project Name

Details On SHEET 3/4  
Layout On SHEET NO.

TELCO 2050x1225x1200 HIGH  
ROADWAY INSPECTION CHAMBER

Scales NTS  
Drawn GB  
Date

Checked By -  
Dwg. No. 04699-S1  
Rev. C

Dwg Title ELEVATIONS