



AVK SUPA MAXI™ FLANGE ADAPTOR, PN16

633/00

Universal and tensile, A4 bolts, EPDM sealing

AVK's Supa Maxi™ range of universal tensile couplings sets a new standard. The patented SupaGrip™ sealing support system with flexible bracket ensures full support of the gasket and full tensile strength on all pipe types up to PN16. Supa Maxi™ couplings are very easy to mount with the possibility of $\pm 4^\circ$ angular deflection, the permanent protection caps, the lifting eye and the fact that they are tightened from the sleeve side with no need for re-tightening the bolts.

Description:

Supa Maxi™ flange adaptor - universal & tensile - A4 bolts and nuts for drinking water and neutral liquids -30°C to +70°C

Standards:

- Designed according to EN 14525
- Universal flange drilling to EN1092 (ISO 7005-2), PN10/16

Tests/Approvals:

- Approved according to KIWA Certificate K 66561/01
- Approved to ÖVGW Certificate W 1.604
- Approved according to SVGW Certificate No. 1205-6041

Features:

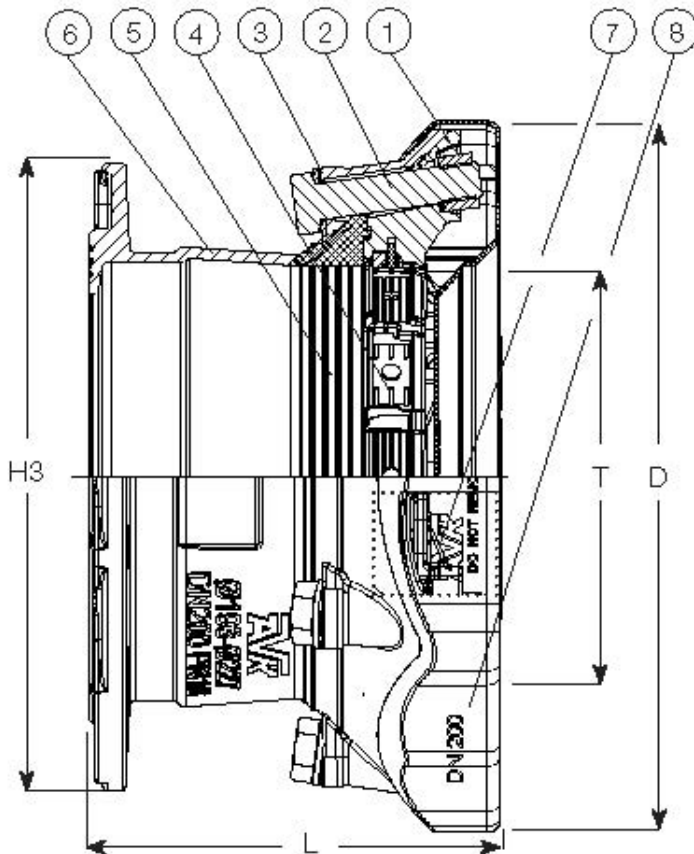
- Patented SupaGrip™ sealing support system with flexible bracket ensures full support of the gasket even at minimum pipe size
- Full tensile strength on all pipes is ensured by two different metal grip segments - every other of gunmetal for PE/PVC and of hardened Stainless Steel for Cast Iron/Ductile Iron/Steel/Stainless Steel/GRP/asbestos cement pipes. For PE-pipes a support bush is to be used
- Metal grip segments are mounted with pins for maximum durability
- $\pm 4^\circ$ angular deflection at max. 1.5 x PN16
- Large tolerance ranges
- All DN's are for PN16 (Stainless Steel, AC, Bi-PVC, and CFW GRP pipes max. PN10)
- Ductile Iron body and bracket of Cast Steel, epoxy coated according to DIN 30677-2 and GSK approved
- Gasket of drinking water approved EPDM rubber
- Bolts and nuts of acid-resistant Stainless Steel A4 are anti-friction coated to prevent galling
- Permanent protection cap protects the coupling during handling and installation
- The pipe will not move inwards when tightening
- Bolts are tightened from the sleeve side for full access when space is limited
- Re-tightening of bolts is not necessary
- Lifting eye in DN100-400
- Design pressure 29 bar according to EN 14525 (DN400: 27 bar for PE-pipes). Working pressure max. 16 bar. Max. test pressure according to pipe standard



kiwa



Expect... **AVK**



DN	Supa Maxi end	Multi drilling
40/50	3 x M14 x 75mm	1, 2, 3, 4, 5, 8, 9, 10
50/65	3 x M16 x 75mm	1, 2, 3, 4, 5, 8, 9, 10
80	3 x M16 x 75mm	1, 2, 3, 4, 5, 8, 9, 10, 11
100	4 x M16 x 75mm	1, 2, 3, 4, 5, 6, 7, 8, 9, 11
125	4 x M16 x 75mm	1, 2, 3, 4, 5, 6, 7, 8, 9, 11
150	6 x M20 x 100mm	1, 2, 5, 9, 11
200	6 x M20 x 100mm	1, 2, 5, 9, 11
250	6 x M20 x 100mm	1, 2, 5
250	6 x M20 x 100mm	1, 2, 5
300	8 x M20 x 100mm	1, 2, 5, 9, 11
400	10 x M24 x 120mm	1, 2

Drilling*	6. BS 10 Table F
1: IOS 7005-2, EN 1092-2 1997, DN251 (unicersal drilling)	7. BS 10 Table H
2. AISI B16.1 1 CL 125	8. DIN 1882
3. BS 10 Table A	9. AS 2129 Table D - E
4. BS 10 Table D	10. AUG-TAU
5. BS 10 Table E	11. AS 4087 Fig. B5

Component list

1. Nut	Acid resistant Stainless Steel A4	5. Bracket	Cast Steel
2. Bolt	Acid resistant Stainless Steel A4	6. Gasket	DVGW/NF approved EPDM rubber
3. Washer	Acid resistant Stainless Steel A4	7. Bracket	Cast Steel
4. Grip segment	Gunmetal RG5 and Stainless Steel	8. Protection cap	Recyclable PE

Components can be substituted with equivalent or higher class materials.

Reference nos. and dimensions

AVK ref. nos.	Valve DN mm	Product PN class	T mm	L mm	D mm	H3 mm	Theoretic weight kg
633-071-00-0063	40-50	PN16	48-71	197	165	5.0	5.0
633-091-00-0063	50-65	PN16	69-91	197	185	6.0	6.0
633-106-00-0063	80	PN16	82-106	198	235	100	6.5
633-133-00-0063	100	PN16	104-133	203	268	229	9.0
633-161-00-0063	125	PN16	132-161	198	285	254	11
633-188-00-0063	150	PN16	159-188	220	340	285	12
633-227-00-0063	200	PN16	193-227	243	389	343	19
632-257-00-0063	250	PN16	224-257	245	437	406	25
632-301-00-0063	250	PN16	266-301	254	476	406	28
633-356-00-0063	300	PN16	314-356	282	545	483	36
633-442-00-0063 ⁽¹⁾	400	PN16	392-442	447	661	597	80

⁽¹⁾ KIWA approval pening