

Standard bends



This comprehensive range of fittings are designed to meet the requirements of the joint AS/NZS 2280 standard. This standard ensures that all pipe fittings have consistent dimensions and manufacturing tolerances, and are fully interchangeable with other AS/NZS 2280 fittings.

End features

Flanged ends

Flanged ductile iron standard bends are drilled to standard AS 4087 or with special drillings as required.

Dualseal™

Dualseal™ is a range of socketed rubber ring joint end connections, for ductile iron fittings. The interchangeable dual rubber seal allow the same fitting to be used for pipes with a common nominal bore with varying outside diameters, such as series 1 and series 2 PVC pipes, ductile iron and steel pipe.

Features

- Complies to AS/NZS 2280 Standard
- High strength light weight ductile iron construction
- Compatible with all current pipe types

Options

- Multiple end configurations





Description

DualSeal Bends (Socket/Socket)

Use

For use with potable & non-potable water or waste

Manufacturing Standard

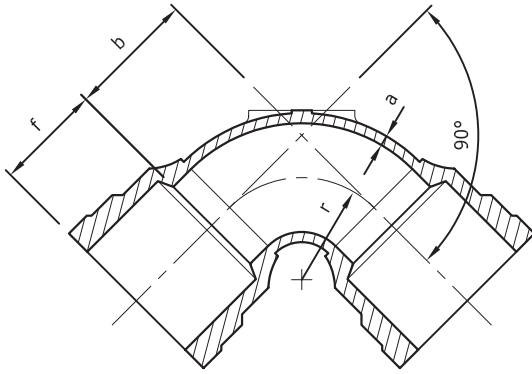
Manufactured to AS/NZS 2280

Testing

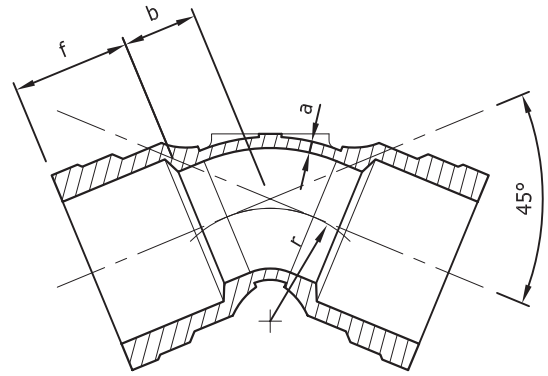
Hydrostatically tested & certified to 2400 Kpa

Coating

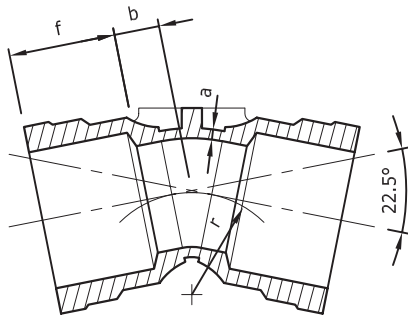
Coated to AS/NZS 4158



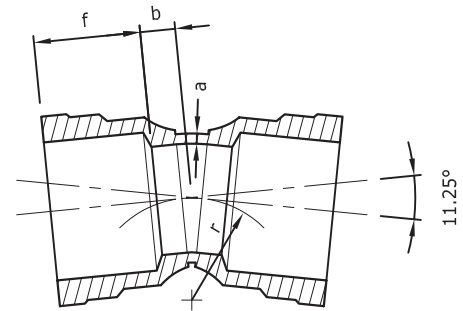
(a) 90° Bend



(b) 45° Bend



(c) 22 1/2° Bend



(c) 11 1/4° Bend

Dimensions

Nominal size (DN)	PN 35 (a) mm	(r) mm	(b) mm			
			Angle of bend – degrees			
			90	45	22 1/2	11 1/4
100	8	152	165	80	45	30
150	9	190	205	95	55	35
200	10	203	220	100	55	35
225	10	229	250	115	65	45
250	10	254	275	125	70	45
300	11	305	325	145	80	50
375	12	381	405	185	100	65
450	13	457	480	215	115	70
500	14	508	535	235	125	75
600	15	610	635	280	145	85
750	18	765	795	345	180	105

Notes

1. Minimum wall thickness for other pressure classifications shall comply with AS/NZS 2280.
2. For details of dimension 'f' and socket profile, refer to manufacturer.



Description

DualSeal Bends (Flange/Flange)

Use

For use with potable & non-potable water or waste

Manufacturing Standard

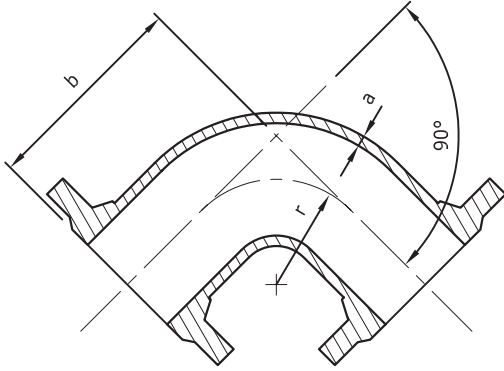
Manufactured to AS/NZS 2280

Testing

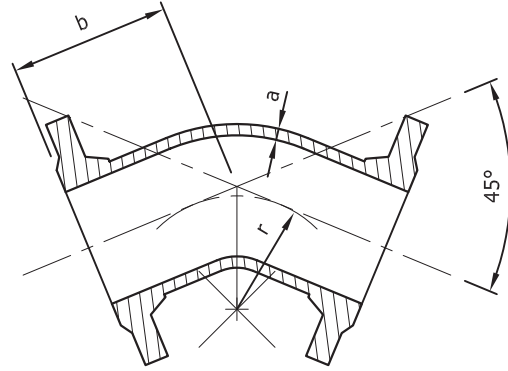
Hydrostatically tested & certified to 2400 Kpa

Coating

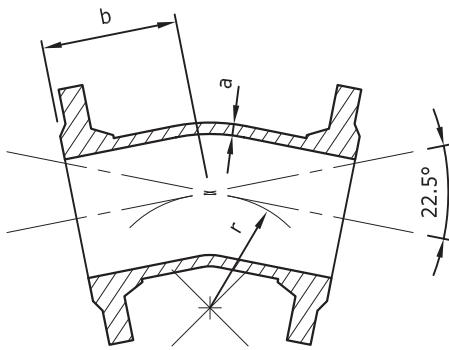
Coated to AS/NZS 4158



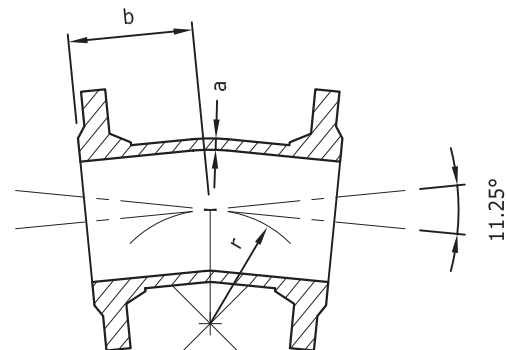
(a) 90° Bend



(b) 45° Bend



(c) 22 1/2° Bend



(c) 11 1/4° Bend

Dimensions

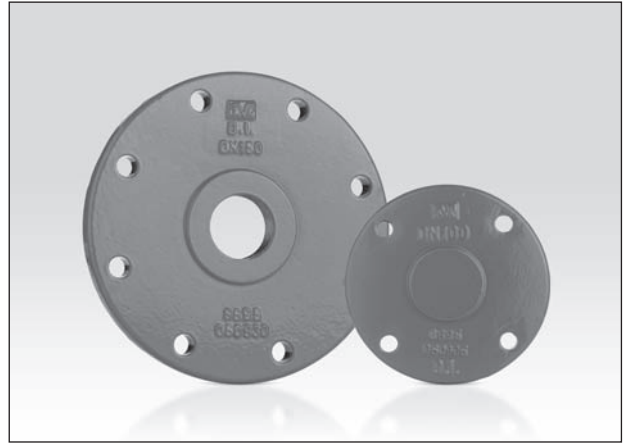
Nominal size (DN)	PN 35 (a) mm	(r) mm	(b) mm			
			Angle of bend – degrees			
			90	45	22 1/2	11 1/4
100	8	152	241	152	152	152
150	9	190	279	190	190	190
200	10	203	305	203	203	203
225	10	229	330	229	229	229
250	10	254	356	254	254	254
300	11	305	406	305	305	305
375	12	381	495	381	381	381
450	13	457	572	457	457	457
500	14	508	622	508	508	508
525	14	533	648	533	533	533
600	15	610	737	610	610	610
750	18	765	905	460	295	230

Notes

1. Minimum wall thickness for other pressure classifications shall comply with AS/NZS 2280.
2. For details of flanges refer to AS 4087.



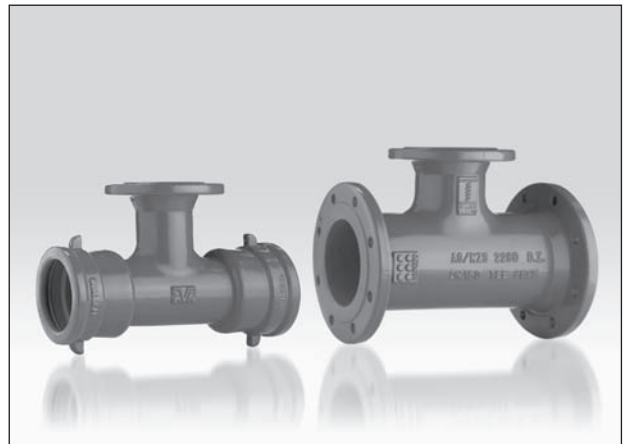
Hydrant Risers



Blank Flanges



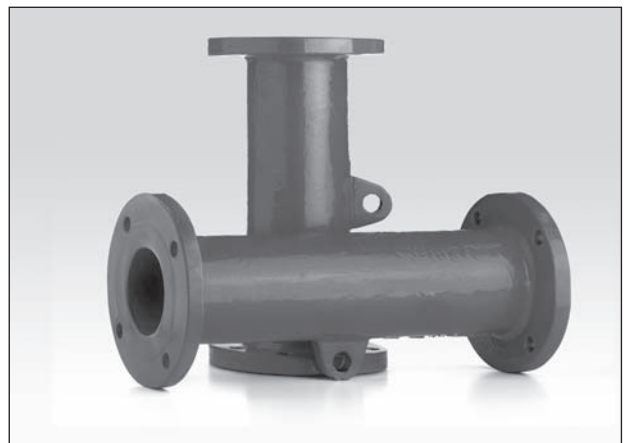
Flange Adaptors



Tees and Hydrant Tees



Reducers



Lengthening Pieces

Buyers and users of the products described in this brochure must make their own assessment of the suitability and appropriateness of the products for their particular use and the conditions in which they will be used. All queries regarding product suitability, purpose or installation should be directed to the nearest Humes Sales Centre for service and assistance. © Fletcher Concrete and Infrastructure Limited 2007. Printed 05/07.

