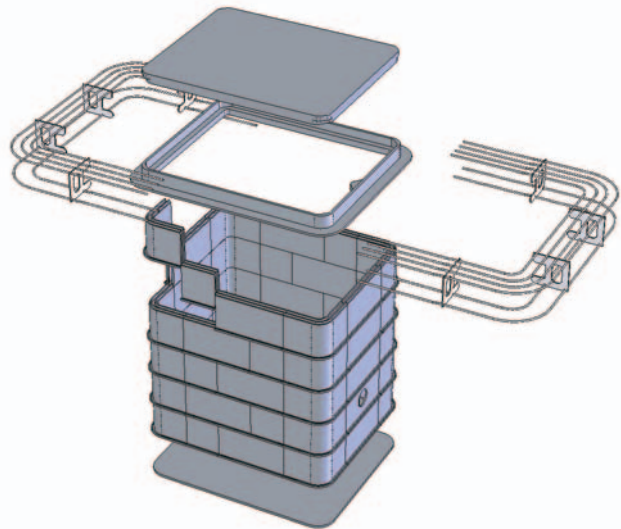


Modular Access Chambers

Product Description

Humes' modular access chambers are made from lightweight polypropylene sections that are joined together to form layers. These layers can be stacked as high as required to form a chamber to the required depth. In conjunction with the Humes composite access covers and chamber bases, this forms a flexible and economic chamber system.



Purpose

Humes' modular chambers are designed for use in offroad applications only. They are primarily designed for use as network access chambers, but can be used in a variety of infrastructure applications. The lack of any inherent scrap value and light weight material makes these chambers the perfect choice for security and Health & Safety conscious network owners.

Specification

Material: Polypropylene

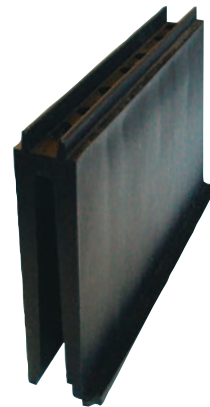
Standards

Telecom Network Specified Product – approved

Installation Guidelines

Full guidelines are available for download from the Humes website: www.humes.co.nz

Installation booklets are also available from all Humes Pipeline Systems branches



Product Dimensions

Item Number	Section	Nominal Opening (mm)	Chamber Outside Width (mm)	Chamber Outside Length (mm)	Chamber Inside Width (mm)	Chamber Inside Length (mm)	Chamber Depth (mm)	Weight (kg)
90861	Section	600 x 750	690	840	595	745	155	9.6
90866	Section	600 x 1200	690	1290	595	1195	155	12.3
90871	Section	1200 x 1200	1290	1290	1195	1195	155	16.8

Note: The above data is for one section of chamber only

Item Number	Package	Nominal Opening (mm)	Chamber Outside Width (mm)	Chamber Outside Length (mm)	Chamber Inside Width (mm)	Chamber Inside Length (mm)	Overall System Depth (mm)	Weight (kg)
90920	Package	600 x 750	690	840	595	745	845	48.0
90921	Package	600 x 1200	690	1290	595	1195	845	61.5
90922	Package	1200 x 1200	1290	1290	1195	1195	845	84.0

Note: The "package" includes: 5 chamber sections, chamber base, access cover set and reo cages

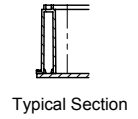
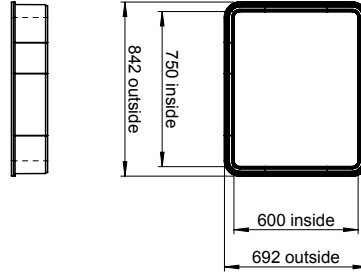
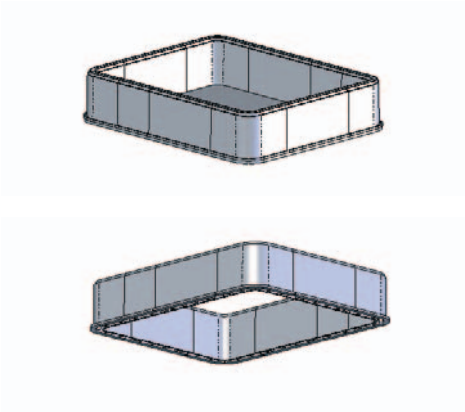
Disclaimer: Buyers and users must make their own assessment of our products under their own conditions for their own use. All queries regarding product suitability or purpose or installation should be directed to the nearest Humes office for advice and assistance. Availability of product may differ slightly from that available in your area. © Copyright Humes Pipeline Systems 2009.

Freephone 0800 502 112 www.humes.co.nz

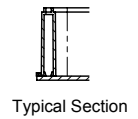
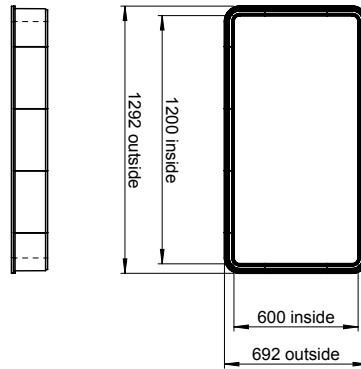
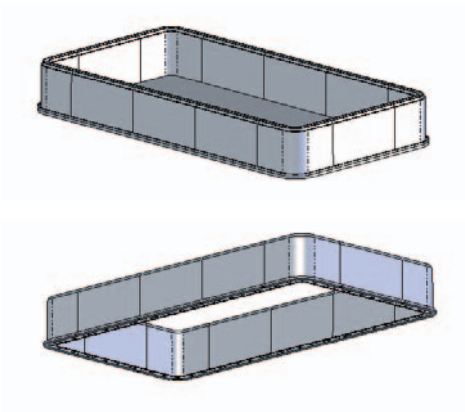


Modular Access Chambers

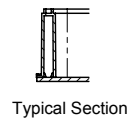
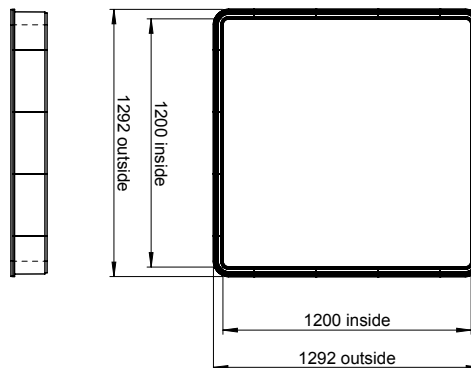
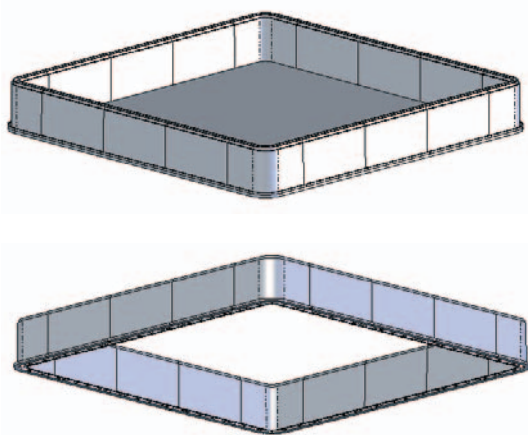
600 x 750



600 x 1200



1200 x 1200



Disclaimer: Buyers and users must make their own assessment of our products under their own conditions for their own use. All queries regarding product suitability or purpose or installation should be directed to the nearest Humes office for advice and assistance. Availability of product may differ slightly from that available in your area. © Copyright Humes Pipeline Systems 2008.

Freephone 0800 502 112 www.humes.co.nz

