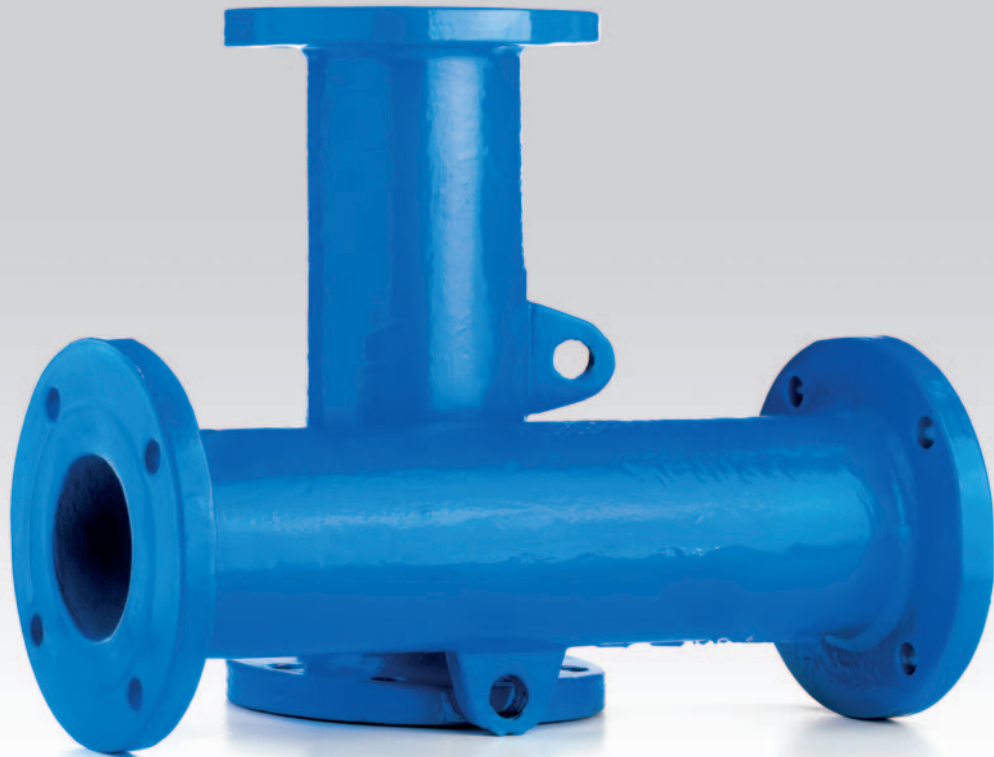


Lengthening pieces



This comprehensive range of fittings are designed to meet the requirements of the joint AS/NZS 2280 standard. This standard ensures that all pipe fittings have consistent dimensions and manufacturing tolerances, and are fully interchangeable with other AS/NZS 2280 fittings.

End Features

Lengthening pieces 'spools' feature raised face flanges drilled to AS 4087 or as required. Alternatively spigot or composite ends are available. Optional BSP offtakes for test points or service connections can also be incorporated into the spools as required.

An optional puddle flange can be cast or fabricated into the fitting at any position to suit various installations.

Features

- High strength light weight ductile iron construction
- Fabricated mild steel construction coated to AS/NZS 4158
- Drilled standard to comply with AS 4087 or as required

Options

- Positional puddle flange
- Flanged ends
- Plain ends
- Composite ends
- Fabricated in 316 stainless steel





Description

Ductile iron lengthening pieces

Fabricated mild steel lengthening pieces
or 316 stainless steel

Use

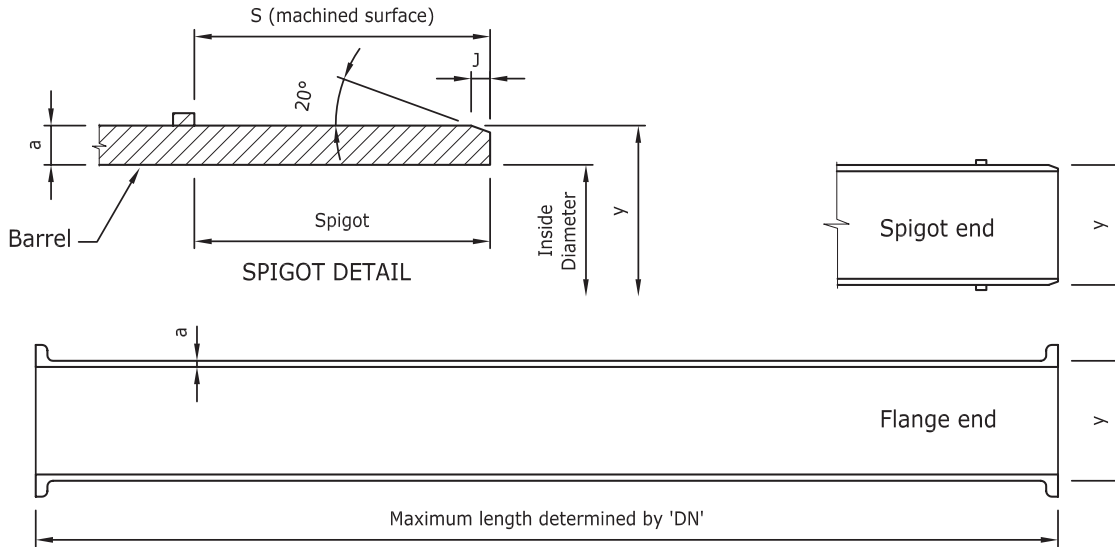
For use with potable & non-potable water or waste

Manufacturing Standard

Manufactured to AS/NZS 2280

Coating

Coated to AS/NZS 4158



Dimensions

Nominal Size	Nominal Wall Thickness (t)	Minimum Wall Thickness (a)	Mean outside diameter (y) (to be machined for spigot end)	Spigot Length (S)	Spigot Chamfer (J)
(DN)	mm	mm	mm	mm	mm
80	-	-	96 + 1, -2	89	10 ± 2
100	7.0	6.0	122 + 1, -2	102	10 ± 2
150	8.0	6.0	177 + 1, -2	102	10 ± 2
200	8.0	7.0	232 + 1, -2	115	10 ± 2
225	9.0	7.0	259 + 1, -2	115	10 ± 2
250	9.0	8.0	286 + 1, -2	115	10 ± 2
300	10.0	8.0	345 + 1, -2	115	10 ± 2
375	10.0	9.0	426 ± 2	140	16 ± 2
450	11.0	10.0	507 ± 2	140	16 ± 2
500	12.0	10.0	560 ± 2	140	16 ± 2
525	-	-	587 ± 2	140	16 ± 2
600	13.0	11.0	667 ± 2	140	16 ± 2
675	-	-	747 ± 2	165	16 ± 2
750	15.0	13.0	826 ± 2	170	20 ± 2

Notes

1. Minimum wall thickness shall comply with AS/NZS 2280.
2. The standard classifications are shown. Other classifications are allowed.
3. Pipes cut beyond limits of tolerance may require machining or dressing for satisfactory jointing.
4. 20° is a nominal value.

Buyers and users of the products described in this brochure must make their own assessment of the suitability and appropriateness of the products for their particular use and the conditions in which they will be used. All queries regarding product suitability, purpose or installation should be directed to the nearest Humes Sales Centre for service and assistance. © Fletcher Concrete and Infrastructure Limited 2007. Printed 05/07.

