

Universal flange adaptor PN 16
 For cast iron, ductile iron, steel, PVC-U, PVC-M, PVC-O, AC and copper pipes
 Flange drillings suit AS 4087 Fig B5; AS 2129 Tables D and E

Use:

For water and sewage applications to max. 40°C
 Angular deflection of ±4 degrees
 16 bar / 160 metres allowable operating pressure (AOP)
 Non tensile
 This product provides no longitudinal joint restraint

Materials:

Gland rings, flange	Ductile iron, AS 1831 Gr. 400-12 min.
Coating	Fusion bonded epoxy to AS/NZS 4158
Rubber seals	Water: EPDM to AS 1646 AS/NSZ 4020 compliant
Nuts	SS 316, PTFE coated
Washers	SS 316
Bolts	SS 316

Approvals:

All materials are AS/NZS 4020 compliant



AVK Australia's website contains the latest product information and data sheets.

Designs, materials and specifications shown are subject to change without notice due to our continuing program of product development.



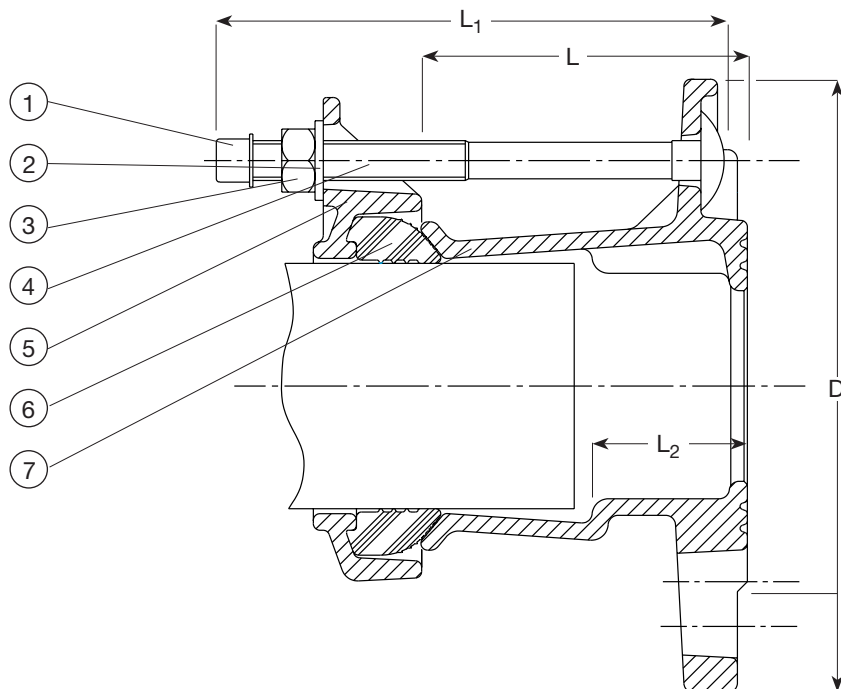
AVK Australia Pty Ltd
 559A Grand Junction Road, Wingfield, SA 5013 Australia
 Tel: +61 8 8368 0900
 Fax: +61 8 8368 0970
 E-mail: info@avkvalves.com.au
 www.avkvalves.com.au
 Copyright© AVK Group A/S 2010

3N603XKQ
 April 2010

Universal flange adaptor PN 16
 For cast iron, ductile iron, steel, PVC-U, PVC-M, PVC-O, AC and copper pipes
 Flange drillings suit AS 4087 Fig B5; AS 2129 Tables D and E

Component list

- | | | | |
|------------|---------|----------------|-----------|
| 1. End cap | 3. Nut | 5. Gland ring | 7. Flange |
| 2. Washer | 4. Bolt | 6. Rubber seal | |



Ref. nos.	Flange DN	L mm	L1 mm	L2 mm	D mm	Sealing range mm	Barrel Bolts	Flange Drilling **	Weight kilos
603-063000-4-312	40/50	98.5	145	47	165	46 - 63	4	4 & 5	3.80
603-074000-4-312	50	98.5	145	47	165	57 - 74	4	4 & 5	3.90
603-074001-4-312	50/65	98.5	145	47	185	57 - 74	4	4 & 5	4.10
603-085000-4-312	50/65	98.5	145	47	185	68 - 85	4	4 & 5	4.20
603-106000-4-312	80	100	145	47	200	84 - 106	4	4 & 5	5.00
603-106001-4-312	80/100	100	145	47	229	84 - 106	4	4 & 5	5.30
603-119000-4-312	100	100	145	47	229	99 - 119	4	4 & 5	5.60
603-133000-4-312	100	101	145	47	229	109 - 133	4	4 & 5	5.80
603-133001-4-312	100/125	101	145	47	254	109 - 133	4	4 & 5	6.50
603-157000-4-312	125/150	115.5	145	52.5	285	132 - 157	4	4 & 5	8.30
603-183000-4-312	150	109	170	51.5	285	157 - 183	4	4 & 5	8.30
603-201000-4-312	150	112	170	52	343	176 - 201	4	4 & 5	10.40
603-215000-4-312	200	117	170		343	193 - 215	4	4 & 5	11.60
603-242000-4-312	200	117	170	53	406	218 - 242	4	4 & 5	12.40
603-268003-4-312	225/250*		170	118.5	405	242 - 268	8	4	17.00
603-292003-4-312	250	118.5	170	54	405	266 - 292	8	4	17.85
603-327000-4-312	300	119.5	170	60.5	483	301 - 327	6	4 & 5	22.40
603-350000-4-312	300	119.5	170	60.5	483	324 - 350	6	4 & 5	24.00
603-410003-4-312	375	157	210	54	550	384 - 410	12	4 & 5	29.50
603-436003-4-312	375	161	210	57.5	550	410 - 436	12	4 & 5	28.05
603-462003-4-312	400	161	210	57.5	580	436 - 462	12	4 & 5	31.85

* Denotes slotted flange drilling

** Flange drilling: 4: AS 4087 Fig. B5, AS 2129 Table D
 5: AS 2129 Table E