

CABLE MANAGEMENT CATALOGUE 2011





**CONDUIT PIPES
& FITTINGS**

Pg 4-10

**TOP HAT
CAPPING**

Pg 10

**HALOGEN FREE
CONDUIT AND FITTINGS**

Pg 11-13

**TRUNKING
& FITTINGS**

Pg 14-16

**ACCESS PITS &
ACCESSORIES**

Pg 18-20

**ELECTRICAL CABLE
DUCTING**

Pg 21

COMMUNICATIONS

Pg 22-24

**AIR CONDITIONING
DUCTING**

Pg 17-18

**TECHNICAL
DATA**

Pg 25-30



HIGH IMPACT CONDUIT PIPE - S.O.E

CODE	PACK	COLOUR	REC.TRADE PRICE PER LENGTH
01.20	80m (20 x 4m)	G & O	20.21
01.25	40m (10 x 4m)	G & O	25.51
01.32	40m (10 x 4m)	G & O	33.59
01.40	24m (6 x 4m)	G & O	45.93
01.50	24m (6 x 4m)	G & O	70.35

PVC FLEXIBLE CONDUIT

CODE	PACK	COLOUR	REC.TRADE PRICE PER COIL
30.20G	1 Coil 25m	G	135.21
30.25G	1 Coil 25m	G	160.98
30.32G	1 Coil 25m	G	245.51
30.40G	1 Coil 25m	G	526.49
30.50G	1 Coil 25m	G	801.58

POLYPROPYLENE FLEXIBLE CONDUIT

CODE	PACK	COLOUR	REC.TRADE PRICE PER COIL
30.20PPG	1 Coil 25m	G	118.09
30.25PPG	1 Coil 25m	G	149.29

Note: High UV resistance of Polypropylene Flexible Conduit makes it ideal for outdoor applications



Conduit Fittings

PLAIN COUPLINGS

CODE	PACK	COLOUR	REC.TRADE PRICE PER UNIT
02.16G	50	G	1.28
02.20	50	G & O	1.35
02.25	20	G & O	1.49
02.32	20	G & O	2.05
02.40	20	G & O	3.39
02.50	20	G & O	5.76

FLEXIBLE EXPANSION COUPLINGS

CODE	PACK	COLOUR	REC.TRADE PRICE PER UNIT
03.20	50	G & O	3.28
03.25G	20	G	3.95



PLAIN TO SCREW COUPLINGS

CODE	PACK	COLOUR	REC. TRADE PRICE PER UNIT
04.20	50	G & O	2.10
04.25	20	G & O	2.80
04.32	10	G & O	4.64
04.40	10	G & O	7.17
04.50	10	G & O	12.50



PLAIN TO SCREW ADAPTERS

CODE	PACK	COLOUR	REC. TRADE PRICE PER UNIT
05.16G	50	G	2.21
05.20	50	G & O	2.27
05.25	20	G & O	2.80
05.32	20	G & O	3.65
05.40	10	G & O	5.88
05.50	10	G & O	7.83



SCREWED NIPPLES

CODE	PACK	COLOUR	REC. TRADE PRICE PER UNIT
06.16G	50	G	1.38
06.20	50	G & O	1.59
06.25	20	G & O	1.98
06.32	20	G & O	3.50
06.40	20	G & O	5.06
06.50	10	G & O	5.86



PLAIN REDUCERS

CODE	PACK	COLOUR	REC. TRADE PRICE PER UNIT
07.20G	50	G	1.46
07.25	50	G & O	1.46
07.32	20	G & O	3.59
07.40	20	G & O	4.97
07.50	10	G & O	11.67

Note: Fittings reduce to next lower size



SCREWED REDUCERS

CODE	PACK	COLOUR	REC. TRADE PRICE PER UNIT
08.20	50	G & O	2.99
08.25	50	G & O	8.92
08.32	50	G & O	9.38

Note: Fittings reduce to next lower size



LOCKNUTS CODE	PACK	COLOUR	REC.TRADE PRICE PER UNIT
09.16	100	G & O	0.56
09.20	100	G & O	0.60
09.25	50	G & O	0.94
09.32	50	G & O	1.16
09.40	20	G & O	4.29
09.50	20	G & O	5.47



LOCKRINGS CODE	PACK	COLOUR	REC.TRADE PRICE PER UNIT
29.20	100	G	0.60
29.25	50	G	0.94

NEW



SADDLES CODE	PACK	COLOUR	REC.TRADE PRICE PER UNIT
10.20	100	G & O	0.60
10.25	100	G & O	0.86
10.32	50	G & O	1.18
10.40	50	G & O	1.31
10.50	20	G & O	1.46



HALF SADDLE CODE	PACK	REC.TRADE PRICE PER UNIT
10.20.HS.ZP	100	0.95
10.25.HS.ZP	100	1.29
10.32.HS.ZP	100	2.05



SADDLE SPACER CODE	PACK	COLOUR	REC.TRADE PRICE PER UNIT
SS.20G	50	G	3.41
SS.25G	20	G	3.86



CONDUIT CLIPS CODE	PACK	COLOUR	REC.TRADE PRICE PER UNIT
19.20	50	G & O	2.56
19.25	50	G & O	2.96
19.32	20	G & O	3.39
19.40	20	G	6.08
19.50	10	G	6.90



SOLID ELBOWS CODE	PACK	COLOUR	REC.TRADE PRICE PER UNIT
11.16	20	G & O	4.51
11.20	20	G & O	4.64
11.25	20	G & O	5.12



PLAIN BENDS

CODE	PACK	COLOUR	REC. TRADE PRICE PER UNIT
12.20	20	G & O	4.51
12.25	20	G & O	5.01
12.32	10	G & O	5.92
12.40	5	G & O	6.55
12.50	5	G & O	8.45



SWEEP BENDS 45°

CODE	PACK	COLOUR	REC. TRADE PRICE PER UNIT
12A.20.45	1	G & O	8.97
12A.25.45	1	G & O	12.13
12A.32.45	1	G & O	17.43
12A.40.45	1	G & O	12.16
12A.50.45	1	G & O	13.56



SWEEP BENDS 90°

CODE	PACK	COLOUR	REC. TRADE PRICE PER UNIT
12A.20.90	1	G & O	8.45
12A.25.90	1	G & O	12.11
12A.32.90	1	G & O	12.86
12A.40.90	1	G & O	13.20
12A.50.90	1	G & O	17.82



INSPECTION ELBOW

CODE	PACK	COLOUR	REC. TRADE PRICE PER UNIT
13.20	20	G & O	4.74
13.25	20	G & O	5.08
13.32	10	G & O	7.19
13.40	10	G & O	15.25
13.50	5	G & O	21.73



INSPECTION TEES

CODE	PACK	COLOUR	REC. TRADE PRICE PER UNIT
14.20	20	G & O	5.92
14.25	10	G & O	6.55
14.32	10	G & O	7.95
14.40	5	G & O	15.71
14.50	2	G & O	27.73



INSPECTION BENDS

CODE	PACK	COLOUR	REC.TRADE PRICE PER UNIT
15.20	20	G & O	5.92
15.25	20	G & O	6.23
15.32	10	G & O	7.10



MALE BUSH

CODE	PACK	COLOUR	REC.TRADE PRICE PER UNIT
17.16G	50	G	0.61
17.20G	50	G	0.70
17.25G	20	G	1.26
17.32G	20	G	1.52
17.40G	20	G	2.83
17.50G	10	G	3.41



FEMALE BUSH

CODE	PACK	COLOUR	REC.TRADE PRICE PER UNIT
18.16G	50	G	0.61
18.20G	50	G	0.70
18.25G	20	G	1.26
18.32G	20	G	1.52
18.40G	20	G	2.83
18.50G	10	G	3.41



BENDING SPRINGS

CODE	PACK	REC.TRADE PRICE PER UNIT
20.20	1	39.64
20.25	1	51.66
20.32	1	54.96



ELECTRICAL ENCLOSURE BOXES

CODE	DESC.	SIZE L x W x H (mm)	PACK	REC.TRADE PRICE PER UNIT
EE250	6 Knockouts	100 x 100 x 54	1	28.18
EE256	Plain Sides	100 x 100 x 54	1	32.33
EE354	10 Knockouts	164 x 129 x 68	1	45.78
EE356	Plain Sides	164 x 129 x 68	1	45.78
EE360	10 Knockouts	214 x 162 x 92	1	60.46
EE360H	High-lid, 10 Knockouts + Zintec Gear Plate	214 x 162 x 128	1	77.47
EE362	Plain Sides	214 x 162 x 92	1	60.76
EE362H	High-lid, Plain Sides + Zintec Gear Plate	214 x 162 x 128	1	77.55



Note: Comes with rubber gasket for IP55 protection against dust and water

CONDUIT GLANDS

CODE	PACK	COLOUR	REC. TRADE PRICE PER UNIT
27.20G	20	G	7.95
27.25G	20	G	9.84
27.32G	10	G	18.99
27.40G	5	G	50.28
27.50G	5	G	65.59



ADAPTABLE BOXES

CODE	SIZE W x D x H (mm)	PACK	COLOUR	REC. TRADE PRICE PER UNIT
16.01	76 x 76 x 47	5	G	16.96
16.02	114 x 114 x 73	1	G	23.12



CIRCULAR JUNCTION BOXES

CODE	SIZE D x H (mm)	PACK	COLOUR	REC. TRADE PRICE PER UNIT
21.20 (1W)	75 x 35	10	G & O	7.07
21.25 (1W)	75 x 35	10	G & O	7.47
22.20 (2W)	75 x 35	10	G & O	7.07
22.25 (2W)	75 x 35	10	G & O	7.47
23.20 (3W)	75 x 35	10	G & O	7.07
23.25 (3W)	75 x 35	10	G & O	7.47
24.20 (4W)	75 x 35	10	G & O	7.07
24.25 (4W)	75 x 35	10	G & O	7.47
25.20 (A)	75 x 35	10	G & O	7.07
25.25 (A)	75 x 35	10	G & O	7.47



CIRCULAR JUNCTION BOXES

CODE	SIZE D x H (mm)	PACK	COLOUR	REC. TRADE PRICE PER UNIT
21.20.AE (1W)	67 x 38	10	G & O	7.07
21.25.AE (1W)	67 x 38	10	G & O	7.47
22.20.AE (2W)	67 x 38	10	G & O	7.07
22.25.AE (2W)	67 x 38	10	G & O	7.47
23.20.AE (3W)	67 x 38	10	G & O	7.07
23.25.AE (3W)	67 x 38	10	G & O	7.47
24.20.AE (4W)	67 x 38	10	G & O	7.07
24.25.AE (4W)	67 x 38	10	G & O	7.47

2008 SERIES



Note: Designed to fit most batten holders and ceiling roses.

DEEP CIRCULAR JUNCTION BOXES				
CODE	SIZE D x H (mm)	PACK	COLOUR	REC.TRADE PRICE PER UNIT
21.20.AED.G (1W)	67 x 73	10	G	9.71
21.25.AED.G (1W)	67 x 73	10	G	11.30
22.20.AED.G (2W)	67 x 73	10	G	9.71
22.25.AED.G (2W)	67 x 73	10	G	11.30
23.20.AED.G (3W)	67 x 73	10	G	9.71
23.25.AED.G (3W)	67 x 73	10	G	11.30
24.20.AED.G (4W)	67 x 73	10	G	9.71
24.25.AED.G (4W)	67 x 73	10	G	11.30

Note: Designed to fit most batten holders and ceiling roses.

SQUARE JUNCTION BOXES				
CODE	PACK	COLOUR	REC.TRADE PRICE PER UNIT	
51.32 (1W)	5	G & O	14.68	
51.40 (1W)	1	G & O	34.50	
51.50 (1W)	1	G & O	31.22	
52.32 (2W)	5	G & O	14.68	
52.40 (2W)	1	G & O	38.00	
52.50 (2W)	1	G & O	45.49	
53.32 (3W)	5	G & O	14.68	
53.40 (3W)	1	G & O	49.99	
53.50 (3W)	1	G & O	59.30	
54.32 (4W)	5	G & O	14.68	
54.40 (4W)	1	G & O	63.99	
54.50 (4W)	1	G & O	73.10	
55.32 (A)	5	G & O	14.68	
55.40 (A)	1	G & O	38.00	
55.50 (A)	1	G & O	45.49	

JUMBO JUNCTION BOX - CLIP ON LID				
CODE	SIZE W x D x H (mm)	PACK	COLOUR	REC.TRADE PRICE PER UNIT
40.CL	97 x 70 x 53	10	G	13.98

Note: Comes with 4 x 40amp connectors (1x double, 3x single) and pre-inserted nails and screws for quick installation.



NEW

Top Hat Capping & Solving Cement

TOP HAT CAPPING			
CODE	PACK	COLOUR	REC.TRADE PRICE PER UNIT
60.38W	30m(12x2.5m)	White	20.65

SOLVENT CEMENT			
CODE	PACK	COLOUR	REC.TRADE PRICE PER UNIT
SC125C	1	Clear	13.09
SC250C	1	Clear	16.42



NEW HALOGEN FREE PRODUCT RANGE

HFT CONDUIT PIPE

CODE	SIZE OD x ID (mm)	PACK	COLOUR	REC. TRADE PRICE PER UNIT
01.20.HFT	20 x 16.4	1	G	POA
01.25.HFT	25 x 21.4	1	G	POA
01.32.HFT	32 x 27.8	1	G	POA
01.40.HFT	40 x 35.2	1	G	POA
01.50.HFT	50 x 44.4	1	G	POA

Note: HFT adhesive must be used for joining HFT system (not applicable to rubber ring) and when joining lengths together, fittings must be used as HFT conduit does not feature sockets.



HFT PLAIN COUPLINGS

CODE	PACK	COLOUR	REC. TRADE PRICE PER UNIT
02.20.HFT	1	G	POA
02.25.HFT	1	G	POA
02.32.HFT	1	G	POA
02.40.HFT	1	G	POA
02.50.HFT	1	G	POA



HFT PLAIN TO SCREW ADAPTERS W LOCKNUT

CODE	PACK	COLOUR	REC. TRADE PRICE PER UNIT
05.20.HFT	1	G	POA
05.25.HFT	1	G	POA
05.32.HFT	1	G	POA
05.40.HFT	1	G	POA
05.50.HFT	1	G	POA



HFT CONDUIT CLIP

CODE	PACK	COLOUR	REC. TRADE PRICE PER UNIT
19.20.HFT	1	G	POA
19.25.HFT	1	G	POA
19.32.HFT	1	G	POA
19.40.HFT	1	G	POA
19.50.HFT	1	G	POA



HFT SWEEP BENDS

CODE	PACK	COLOUR	REC. TRADE PRICE PER UNIT
12.20.HFT	1	G	POA
12.25.HFT	1	G	POA
12.32.HFT	1	G	POA
12.40.HFT	1	G	POA
12.50.HFT	1	G	POA



HFT INSPECTION ELBOWS

CODE	PACK	COLOUR	REC.TRADE PRICE PER UNIT
13.20.HFT	1	G	POA
13.25.HFT	1	G	POA
13.32.HFT	1	G	POA
13.40.HFT	1	G	POA
13.50.HFT	1	G	POA



HFT INSPECTION TEES

CODE	PACK	COLOUR	REC.TRADE PRICE PER UNIT
14.20.HFT	1	G	POA
14.25.HFT	1	G	POA
14.32.HFT	1	G	POA
14.40.HFT	1	G	POA
14.50.HFT	1	G	POA



HFT CIRCULAR JUNCTION BOXES

CODE	SIZE D x H (mm)	PACK	COLOUR	REC.TRADE PRICE PER UNIT
21.20.HFT (1W)	67 x 38	1	G	POA
21.25.HFT (1W)	67 x 38	1	G	POA
22.20.HFT (2W)	67 x 38	1	G	POA
22.25.HFT (2W)	67 x 38	1	G	POA
23.20.HFT (3W)	67 x 38	1	G	POA
23.25.HFT (3W)	67 x 38	1	G	POA
24.20.HFT (4W)	67 x 38	1	G	POA
24.25.HFT (4W)	67 x 38	1	G	POA
25.20.HFT (A)	67 x 38	1	G	POA
25.25.HFT (A)	67 x 38	1	G	POA



HFT SQUARE JUNCTION BOXES

CODE	PACK	COLOUR	REC.TRADE PRICE PER UNIT
51.32.HFT (1W)	1	G	POA
51.40.HFT (1W)	1	G	POA
51.50.HFT (1W)	1	G	POA
52.32.HFT (2W)	1	G	POA
52.40.HFT (2W)	1	G	POA
52.50.HFT (2W)	1	G	POA
53.32.HFT (3W)	1	G	POA
53.40.HFT (3W)	1	G	POA
53.50.HFT (3W)	1	G	POA
54.32.HFT (4W)	1	G	POA
54.40.HFT (4W)	1	G	POA
54.50.HFT (4W)	1	G	POA
55.32.HFT (A)	1	G	POA
55.40.HFT (A)	1	G	POA
55.50.HFT (A)	1	G	POA



HFT ADAPTABLE BOXES

CODE	SIZE W x D x H (mm)	PACK	COLOUR	REC. TRADE PRICE PER UNIT
16.01.HFT	77 x 77 x 54	1	G	POA
16.02.HFT	108 x 108 x 76	1	G	POA



HFT ADHESIVE

CODE	DESCRIPTION	PACK	REC. TRADE PRICE PER UNIT
3M.01.HFT	Applicator Gun	1	POA
3M.02.HFT	Mixing Nozzle	1	POA
3M.03.HFT	Adhesive	1	POA

Note: Only the above HFT Adhesive can be used to join HFT conduit and fittings.
Marley PVC Solvent Cement is not suitable.



HFT RUBBER JOINT JOINER

CODE	PACK	COLOUR	REC. TRADE PRICE PER UNIT
02.20.HFT.RS	1	G	POA
02.25.HFT.RS	1	G	POA
02.32.HFT.RS	1	G	POA
02.40.HFT.RS	1	G	POA
02.50.HFT.RS	1	G	POA

NOTE: HFT rubber joint fittings IP67 rated
Rubber ring fittings are available as alternative to adhesive



HFT RUBBER JOINT 90° BEND

CODE	PACK	COLOUR	REC. TRADE PRICE PER UNIT
12.20.HFT.RS	1	G	POA
12.25.HFT.RS	1	G	POA
12.32.HFT.RS	1	G	POA
12.40.HFT.RS	1	G	POA
12.50.HFT.RS	1	G	POA

NOTE: HFT rubber joint fittings IP67 rated
Rubber ring fittings are available as alternative to adhesive



HFT RUBBER JOINT PLAIN TO SCREW ADAPTER

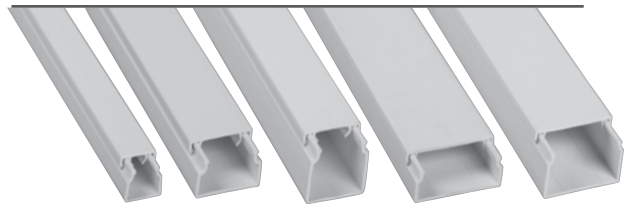
CODE	PACK	COLOUR	REC. TRADE PRICE PER UNIT
05.20.HFT.RS	1	G	POA
05.25.HFT.RS	1	G	POA
05.32.HFT.RS	1	G	POA
05.40.HFT.RS	1	G	POA
05.50.HFT.RS	1	G	POA

NOTE: HFT rubber joint fittings IP67 rated
Rubber ring fittings are available as alternative to adhesive



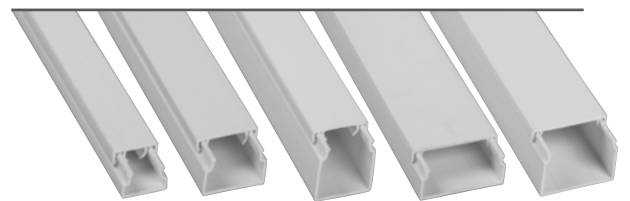
MINI TRUNKING – 3m

CODE	PACK	COLOUR	REC.TRADE PRICE PER UNIT
1610.W3	60m (20 x 3m)	White	12.89
1616.W3	60m (20 x 3m)	White	13.49
2516.W3	60m (20 x 3m)	White	20.06
2516.B3	60m (20 x 3m)	Brown	20.06
2525.W3	30m (10 x 3m)	White	24.17
4016.W3	30m (10 x 3m)	White	26.97
4025.W3	30m (10 x 3m)	White	27.51
4040.W3	30m (10 x 3m)	White	43.80



MINI TRUNKING – 4m

CODE	PACK	COLOUR	REC.TRADE PRICE PER UNIT
1610AD.W4	80m (20 x 4m)	White	17.67
1616AD.W4	80m (20 x 4m)	White	18.53
2516AD.W4	80m (20 x 4m)	White	27.57
2516AD.B4	80m (20 x 4m)	Brown	27.57
2525AD.W4	80m (20 x 4m)	White	33.28
4016AD.W4	40m (10 x 4m)	White	34.14
4025AD.W4	40m (10 x 4m)	White	37.92



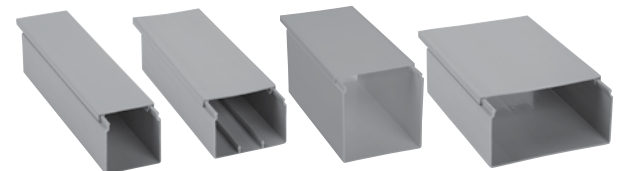
TWIN COMPARTMENT MINI TRUNKING

CODE	PACK	COLOUR	REC.TRADE PRICE PER UNIT
4025TC.W3	30m (10x3m)	White	35.90



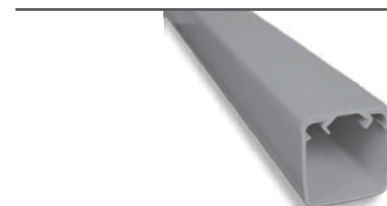
MAXI TRUNKING – 4m

CODE	PACK	COLOUR	REC.TRADE PRICE PER UNIT
5050AD.G4	32m (8 x 4m)	Grey	94.36
7550AD.G4	24m (6 x 4m)	Grey	119.50
7575AD.G4	24m (6 x 4m)	Grey	149.38
100100AD.G4	16m (4 x 4m)	Grey	233.51
15075AD.G4	8m (2 x 4m)	Grey	249.97
10075.G	8m (2 x 4m)	Grey	204.72



EGA TUBE TRUNKING – 3m

CODE	PACK	COLOUR	REC.TRADE PRICE PER UNIT
R5050.GP	18m (6 x 3m)	Grey	71.25
R7550.GP	18m (6 x 3m)	Grey	86.37



MINI TRUNKING INTERNAL ANGLE

CODE	PACK	COLOUR	REC. TRADE PRICE PER UNIT
1616.AI.W	10	White	2.57
2516.AI.W	10	White	3.35
4025.AI.W	5	White	9.15



MINI TRUNKING EXTERNAL ANGLE

CODE	PACK	COLOUR	REC. TRADE PRICE PER UNIT
1616.AE.W	10	White	2.78
2516.AE.W	10	White	3.35
4025.AE.W	5	White	13.40



MINI TRUNKING FLAT ANGLE

CODE	PACK	COLOUR	REC. TRADE PRICE PER UNIT
1616.AFW	10	White	2.57
2516.AFW	10	White	4.39
4025.AFW	5	White	10.17



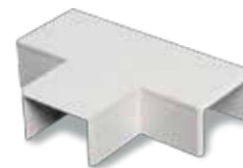
MINI TRUNKING SIDE TEE

CODE	PACK	COLOUR	REC. TRADE PRICE PER UNIT
2516.ST.W	5	White	6.81



MINI TRUNKING FLAT TEE

CODE	PACK	COLOUR	REC. TRADE PRICE PER UNIT
1616.TFW	10	White	4.45
2516.TFW	10	White	4.73



MINI TRUNKING END PIECE

CODE	PACK	COLOUR	REC. TRADE PRICE PER UNIT
1616.EP.W	20	White	1.95
2516.EP.W	10	White	2.26



MINI TRUNKING COUPLING

CODE	PACK	COLOUR	REC. TRADE PRICE PER UNIT
1616.C.W	10	White	2.26
2516.C.W	10	White	3.35
4025.C.W	10	White	3.80



MAXI TRUNKING COUPLING

CODE	SIZE	COLOUR	REC. TRADE PRICE PER UNIT
R5050.C.G	50 x 50	Grey	5.47
R7550.C.G	75 x 50	Grey	5.89
R10075.C.G	100 x 75	Grey	6.09

Note: R10075.C.G coupling can also be used for 100100.AD.G4 Maxi-trunking



MAXI TRUNKING END PIECE

CODE	SIZE	COLOUR	REC. TRADE PRICE PER UNIT
R5050.E.P.G	50 x 50	Grey	8.07
R7550.E.P.G	75 x 50	Grey	8.22
10075.E.P.G	100 x 75	Grey	15.86
100100.E.P.G	100 x 100	Grey	8.92



EGA TUBE END PIECE

CODE	SIZE	COLOUR	REC. TRADE PRICE PER UNIT
R5050.E.P.G	50 x 50	Grey	8.07
R7550.E.P.G	75 x 50	Grey	8.22

Note: EGA Tube end pieces require mitre-cutting (2 x internal pieces) plus rounding of edges to produce an adequate fit

PIPE DUCT – 2m

CODE	PACK	COLOUR	REC.TRADE PRICE PER UNIT
PD80IV2000	1	Ivory	POA
PD100IV2000	1	Ivory	POA



WALL CAP

CODE	PACK	COLOUR	REC.TRADE PRICE PER UNIT
PD80WC	1	Ivory	POA
PD100WC	1	Ivory	POA



CEILING CAP

CODE	PACK	COLOUR	REC.TRADE PRICE PER UNIT
PD80CC	1	Ivory	POA
PD100CC	1	Ivory	POA



PIPE DUCT CORNER

CODE	PACK	COLOUR	REC.TRADE PRICE PER UNIT
PD80C	1	Ivory	POA
PD100C	1	Ivory	POA



PIPE DUCT ELBOW

CODE	PACK	COLOUR	REC.TRADE PRICE PER UNIT
PD80E	1	Ivory	POA
PD100E	1	Ivory	POA



PIPE DUCT JOINT			
CODE	PACK	COLOUR	REC.TRADE PRICE PER UNIT
PD80J	1	Ivory	POA
PD100J	1	Ivory	POA



PIPE DUCT FLEX JOINT			
CODE	PACK	COLOUR	REC.TRADE PRICE PER UNIT
PD80FJ	1	Ivory	POA
PD100FJ	1	Ivory	POA



PIPE DUCT MOUNTING BLOCK			
CODE	PACK	COLOUR	REC.TRADE PRICE PER UNIT
PDMBIV.450	1	Ivory	POA



Access Pits & Accessories

Electrical Cable Management Solutions

For loading details and installation instructions on Pits & Accessories, visit www.marley.co.nz

ACCESS PIT			
CODE	SIZE W x D x H (mm)	PACK	REC.TRADE PRICE PER UNIT
1SD5068	200 x 200 x 200	1	66.96
1SD5069	300 x 300 x 297	1	153.32
1SD5242	400 x 400 x 397	1	268.99
1SD5128	550 x 550 x 520	1	523.16



ACCESS PIT RISER			
CODE	SIZE W x D x H (mm)	PACK	REC.TRADE PRICE PER UNIT
1SD5071	200 x 200 x 200	1	56.48
1SD5072	300 x 300 x 297	1	129.34
1SD5245	400 x 400 x 397	1	226.74
1SD4887	550 x 550 x 520	1	436.65



SHORT PIT RISER			
CODE	SIZE W x D x H (mm)	PACK	REC.TRADE PRICE PER UNIT
1SD5721	300 x 300 x 100	1	44.67
1SD5722	400 x 400 x 100	1	80.93
1SD5723	550 x 550 x 315	1	259.20



PEDESTRIAN LID

CODE	SIZE W x D x H (mm)	PACK	REC. TRADE PRICE PER UNIT
1SD4728	187 x 187 x 25	1	41.98
1SD4729	284 x 284 x 30	1	88.03
1SD4730	383 x 383 x 35	1	179.22
1SD4896	539 x 539 x 45	1	502.47

Pedestrian = Pedestrian & bicycle area



TRAFFICABLE LID

CODE	SIZE W x D x H (mm)	PACK	REC. TRADE PRICE PER UNIT W x D x H (mm)
1SD1759	187 x 187 x 35	1	83.69
1SD1924	284 x 284 x 45	1	189.06
1SD1948	383 x 383 x 55	1	318.58
1SD4782	539 x 539 x 65	1	747.43

Trafficable = 1.5 tonne per wheel*



ACCESS PIT

CODE	SIZE W X D (mm)	PACK	REC. TRADE PRICE PER UNIT
1SD4469	280 x 280	1	121.09

Note: Sold with lid, screws & rubber seal to give water and dust protection when installed correctly.



INSPECTION BASE

CODE	SIZE	PACK	REC. TRADE PRICE PER UNIT
HIB.100.450	DN100/450	1	263.54



CHAMBER RISER

CODE	SIZE	PACK	REC. TRADE PRICE PER UNIT
HIR.450	DN450/160	1	119.06



INSPECTION COVER – PLASTIC

CODE	SIZE	PACK	REC. TRADE PRICE PER UNIT
HIC.450.P	DN450	1	340.02



HUNTER PLUG

CODE	SIZE	PACK	REC. TRADE PRICE PER UNIT
HP.100	DN100	1	21.35



Note: *Light vehicle (private vehicle/motorcycle) driving at no more than 30km/per hour, when installed according to installation instructions.

SHALLOW COVER PLASTIC – SQUARE

CODE	SIZE	PACK	REC.TRADE PRICE PER UNIT
HSC.230.PS	DN230	1	262.69



SHALLOW COVER PLASTIC – ROUND

CODE	SIZE	PACK	REC.TRADE PRICE PER UNIT
HSC.230.PR	DN230	1	258.34



SHALLOW ACCESS BASE

CODE	SIZE	PACK	REC.TRADE PRICE PER UNIT
HSB.100.230	DN100/230	1	144.55



SHALLOW RAISER

CODE	SIZE	PACK	REC.TRADE PRICE PER UNIT
HSR.230	DN230	1	85.07



SHALLOW COVER ALUMINIUM

CODE	SIZE	PACK	REC.TRADE PRICE PER UNIT
HSC.230.AL	DN230	1	250.82



MUST BE USED FOR AIRTIGHT SYSTEM

CODE	SIZE	PACK	REC.TRADE PRICE PER UNIT
HSO.230	DN230	1	25.58



Only with Aluminium cover
 Pedestrian = Pedestrian & bicycle area

Marley NZ offers a wide range of uPVC & PE Duct solutions for cable management - power, communication and fibre optic. Some lines are not held in stock and are made to order. Marley can manufacture product to customer specifications. Custom product variations include: diameter, colour, length (length, coil & drum), wall thickness (impact duty, stiffness &/or SDR rating) and print.

Please contact Marley Sales for MOQs and lead times.

ELECTRICAL CABLE DUCTING				
CODE	SIZE mm	COLOUR	NO. PER CRATE	REC.TRADE PRICE PER LENGTH
700.32.6.0	32	Orange	230	43.22
700.40.6.0	40	Orange	180	59.34
700.50.6.0	50	Orange	149	85.30
700.65.6.0	65	Orange	96	104.36
700.80.6.0	80	Orange	66	141.07
700.100.6.0	100	Orange	60	193.21
700.150.6.0	150	Orange	28	466.21

E.C.D. LONG RADIUS 90° BENDS				
CODE	SIZE mm	PACK	COLOUR	REC.TRADE PRICE PER UNIT
703.32.90.0	32	1	Orange	16.64
703.40.90.0	40	1	Orange	17.22
703.50.90.0	50	1	Orange	17.92
703.65.90.0	65	1	Orange	43.65
703.80.90.0	80	1	Orange	59.61
703.100.90.0	100	1	Orange	82.95
703.150.90.0	150	1	Orange	256.13

E.C.D. 45° SWEEP BENDS				
CODE	SIZE mm	PACK	COLOUR	REC.TRADE PRICE PER UNIT
703.40.45.0	40	1	Orange	16.27
703.50.45.0	50	1	Orange	16.96
703.65.45.0	65	1	Orange	41.57
703.80.45.0	80	1	Orange	54.17
703.100.45.0	100	1	Orange	66.64
703.150.45.0	150	1	Orange	216.82

uPVC DUCT PIPES - OTHER (NON-STOCK)				
CODE	SIZE	PACK.	REC.TRADE PRICE PER LENGTH	
700.50.6.RD	50mm ID Fibre Optic Duct Red - Unbranded	1	POA	
700.100.6.RD	100mm ID Fibre Optic Duct Red - Unbranded	1	POA	
700.100.6.CS	100mm ID SN4 Fibre Optic Salmon - Unbranded	1	POA	
700.100.6.COR	100mm ID SN4 Contract Duct Orange - Unbranded	1	POA	
700SN8.100.6.0	100mm ID SN8 Duct Orange - Unbranded	1	POA	
700.100SN16.6.OR	100mm ID SN16 Duct Orange - Unbranded	1	POA	
700.100SN40.6OR	100mm ID SN40 Duct Orange - Unbranded	1	POA	

Note: Other sizes also available. MOQs and lead times may apply.



Marley NZ manufactures a range of telecommunication duct specifically for Telecom NZ Ltd specifications. Telecom have stated that Telecom Branded product may only be sold to a “Telecom approved installer or their approved subcontractor” for use in Telecom NZ projects. “Unbranded” communications duct is different and may only be used for non-Telecom NZ communications projects.

uPVC DUCT PIPE - GREEN			
CODE	SIZE mm	PACK	REC. TRADE PRICE PER LENGTH
TC20E	20mm ID Telecom Duct Green 6SJ	10	POA
TC50.RRJ	50mm ID Telecom Duct Green 6RRJ	1	POA
TC110.RRJ	100mm ID Telecom Duct Green 6RRJ	1	POA
TC50GRDUCT	50mm ID Comm Duct Green 6RRJ - Unbranded	1	POA
TC110GRDUCT	100mm ID Comm Duct Green 6RRJ - Unbranded	1	POA



uPVC GREEN BENDS			
CODE	SIZE mm	PACK	REC. TRADE PRICE PER UNIT
TCB.20.90.300	20mm x 90° x 100mm radius x 300mm long	1	POA
TCB.20.90.500	20mm x 90° x 240mm radius x 500mm long	1	POA
TCB.20.90.660	20mm x 90° x 300mm radius x 660mm long	1	POA
TCB.20.90.1000	20mm x 90° x 530mm radius x 1000mm long	1	POA
TCB.50.30.600	50mm x 30° x 350mm radius x 600mm long	1	POA
TCB.50.45.600	50mm x 45° x 240mm radius x 600mm long	1	POA
TCB.50.45.750	50mm x 45° x 350mm radius x 750mm long	1	POA
TCB.50.45.1200	50mm x 45° x 900mm radius x 1200mm long	1	POA
TCB.50.90.1000	50mm x 90° x 350mm radius x 1000mm long	1	POA
TCB.50.90.1800	50mm x 90° x 900mm radius x 1800mm long	1	POA
TCB.100.22.1000	100mm x 22° x 900mm radius x 1000mm long	1	POA
TCB.100.30.750	100mm x 30° x 300mm radius x 750mm long	1	POA
TCB.100.45.850	100mm x 45° x 300mm radius x 850mm long	1	POA
TCB.100.90.1200	100mm x 90° x 400mm radius x 1200mm long	1	POA
TCB.100.90.1500	100mm x 90° x 600mm radius x 1500mm long	1	POA
TCB.100.90.1800	100mm x 90° x 900mm radius x 1800mm long	1	POA



uPVC DUCT PIPES AND FITTINGS - WHITE			
CODE	SIZE mm	PACK	REC. TRADE PRICE PER LENGTH
TC20E.WHYTE	20mm ID Telecom Duct White 6SJ	1	POA
TC20WHDUCT	20mm ID Comm Duct 6SJ - Unbranded	1	POA
700.100.6.W	100mm ID Comm Duct 6SJ - Unbranded	1	POA
800.15.PN15	15mm ID White Pressure Pipe 6SJ - Unbranded	1	POA
800.20.PN15	20mm ID White Pressure Pipe 6SJ - Unbranded	1	POA
800.25.PN15	25mm ID White Pressure Pipe 6SJ - Unbranded	1	POA
800.50.PN12	50mm ID White Pressure Pipe 6SJ - Unbranded	1	POA
800.100.PN12	100mm ID White Pressure Pipe 6SJ - Unbranded	1	POA
TCB.20.90.300.WH	TC Bend 20 x 90° 300 Long 100 rad	1	POA
TCB.20.90.660.WH	TC Bend 20 x 90° 66 Long 300 rad	1	POA
TCJ.B	Telecom Junction Box White	1	POA
TC.SCREW.50	Telecom Screws Tri-wing	50	POA



POLYETHYLENE POWER SUBDUCT				
CODE	SIZE mm	COLOUR	LENGTH	REC.TRADE PRICE PER COIL
SUBD.32.200.0	32mm	Orange	200m	POA
SUBD.32.500.0	32mm	Orange	500m	POA
SUBD.32.1000.0	32mm	Orange	1000m	POA



POLYETHYLENE POWER COMDUCT				
CODE	SIZE mm	COLOUR	LENGTH	REC.TRADE PRICE PER COIL
COMD.63.50.0	63mm	Orange	50m	POA
COMD.63.100.0	63mm	Orange	100m	POA
COMD.63.150.0	63mm	Orange	150m	POA
COMD.90.100.0	90mm	Orange	100m	POA
COMD.110.50.0	110mm	Orange	50m	POA
COMD.110.100.0	110mm	Orange	100m	POA
COMD.125.100.0	125mm	Orange	100m	POA
COMD.140.100.0	140mm	Orange	100m	POA
COMD.160.12.0	160mm	Orange	12m	POA



POLYETHYLENE COMMUNICATION SUBDUCT - GREEN				
CODE	SIZE mm		PACK	REC.TRADE PRICE PER COIL
SERVD.20.200.TG	20mm	Telecom Service Duct Green x 200m	1	POA
SUBD.25.1000.TG	25mm	Telecom Sub Duct Green 1000m	1	POA
SUBD.32.500.TG	32mm	Telecom Sub Duct Green 500m	1	POA
SUBD.32.1000.TG	32mm	Telecom Sub Duct Green 1000m	1	POA



POLYETHYLENE COMMUNICATION SUBDUCT - OTHER				
CODE	SIZE mm		PACK	REC.TRADE PRICE PER COIL
SUBD.32.500.TR	32mm	Telecom Sub Duct Red 500m	1	POA
SUBD.32.1000.TR	32mm	Telecom Sub Duct Red 1000m	1	POA
SUBD.32.500.TV	32mm	Telecom Sub Duct Violet 500m	1	POA
SUBD.32.1000.TV	32mm	Telecom Sub Duct Violet 1000m	1	POA
SUBD.32.500.TB	32mm	Telecom Sub Duct Brown 500m	1	POA
SUBD.32.1000.TB	32mm	Telecom Sub Duct Brown 1000m	1	POA



POLYETHYLENE COMMUNICATION COMDUCT - GREEN				
CODE	SIZE mm		PACK	REC.TRADE PRICE PER COIL
COMD.63.50.G	63mm	Comm Duct Green 50m	1	POA
COMD.63.100.G	63mm	Comm Duct Green 100m	1	POA
COMD.63.150.G	63mm	Comm Duct Green 150m	1	POA
COMD.110.50.G	110mm	Comm Duct Green 50m	1	POA
COMD.110.100.G	110mm	Comm Duct Green 100m	1	POA



Note: Additional sizes / colours / specifications available on request.
Minimum order quantities and manufacturing / delivery lead times apply.

Polyethylene Jointing Systems

Marley offers a range of fittings for Polyethylene jointing:

1. Marley Metric Compression Fittings (20mm - 110mm, joiners, reducers, tee's, elbows & slip couplers)
2. FRIATEC Electrofusion Fittings (32 - 160mm, slide over couplers, end caps, elbows, repair sleeves)

Other

To complement Marley's range of E.C.D. products, we can also offer a number of additional solutions from our extensive plumbing range. This includes Marley grey DWV & SW Duct, Pressure Pipe (white), Drain Coil and associated fittings (End caps, Couplers, Tee's, Junctions, Reducers, Access Pipe/Junctions, Pipe Clips etc). It is important that all Marley products be installed as per its design and to relevant NZ Regulations.

Please contact Marley Sales for any additional product requests.

POLYETHELENE JOINTING SYSTEMS			
CODE	DESCRIPTION	SIZE mm	PRICE PER UNIT
MM301.20	Marley Metric Joiner	20DN	POA
MM301.25	Marley Metric Joiner	25DN	POA
MM301.32	Marley Metric Joiner	32DN	POA
MM301.40	Marley Metric Joiner	40DN	POA
MM301.50	Marley Metric Joiner	50DN	POA
MM301.63	Marley Metric Joiner	63DN	POA
MM301.75	Marley Metric Joiner	75DN	POA
MM301.90	Marley Metric Joiner	90DN	POA
MM301.110	Marley Metric Joiner	110DN	POA
MM301.32S	Marley Metric Slip Coupler	32DN	POA
MM308.32	Marley Metric Elbow	32DN	POA
T680001	EF-Coupler SDR17	110DN	POA
T612665	EF- Coupler SDR11	63DN	POA
T612667	EF- Coupler SDR11	90DN	POA
T612669	EF- Coupler SDR11	125DN	POA
T6150001	Slide Coupler SDR11-17	140DN	POA



MARLEY - OTHER			
CODE	DESCRIPTION	SIZE mm	PRICE PER UNIT
737.100	Push on cap	100DN	POA
710.100T	Solvent Coupler (Threaded)	100DN	POA
136.100S	DWV Screw Cap & Base	100DN	POA
136C.100	DWV Screw Cap Only	100DN	POA
140.100	DWV Pipe Clip Saddle	100DN	POA
110.100.RPC	DWV Repair Sleeve 2m	100DN	POA

The following information applies to Conduit, Trunking, Top Hat Capping and Enclosure Boxes.

Property	Performance
Co-efficient of Thermal Expansion	6 x 10 ⁻⁵ per°C
Specific Heat	.25 cal/°C
Thermal Conductivity	.16 w/m°C
Flammability	Self Extinguishing
Specific Gravity	1.46
Water Absorption	0.50%
Vicat Softening Point	80°C
Max. Service Temp	60°C
Min. Service Temp	-15°C
Dielectric Strength	14 - 38 KV/mm
Voltage Resistivity	1.2 x 10 ¹⁴ Ωm
Surface Resistances	10 ⁹ - 10 ¹⁴ Ω
Dielectric Constant	3.9 (3.3) 50 HZ (106 HZ)
Dissipation Factor (Power Factor)	0.01 (1.02) 50 HZ (106 HZ)

WEATHER DURABILITY

Marley High Impact Grey Conduit has a minimum of 1.5 parts of rutil titanium for effective UV stabiliser along with selected weatherable acrylic impact modifier to aid long term outdoor toughness and durability.

Orange Conduit is designed for interior and concealed installation with tough impact performance.

RESISTANCE TO BURNING

Marley high impact conduit is classified by the AS/NZS 2053 standard as a 'non-flame propagating' conduit which does not support combustion.

CHEMICAL RESISTANCE

Marley uPVC products are highly resistant to common corroding agents. They SHOULD NOT be used if liable to be exposed to solvents such as ketones, esters, aromatic and chlorinated hydrocarbons.

SAFETY

uPVC products are non-conductive and there is no risk of becoming live.

CABLE CARRYING CAPACITIES

The maximum number of cables that may be enclosed in a conduit, tube or pipe shall be an amount which permits installation of the cables without damage as per NZECP 28 Clause 5.6. As a guide, the space factor for conduit and ducting is 60%, trunking - 55% and top hat - 60% or see 1997 Electrical Wiring Regulations Clause 70. The following tables enable a calculation to be made, but are given as a guide only.

TRUNKING

Code	Nominal Internal Size mm	Capacity mm ² (45%)
Mini Trunking		
1610.W3 / 1610AD.W4	12 x 8	43
1616.W3 / 1616AD.W4	13 x 14	82
2516.W3 & B3 / 2516AD.W4 & B4	22 x 14	138
2525.W3 / 2525AD.W4	22 x 23	227
4016.W3 / 4016AD.W4	37 x 14	233
4025.W3 / 4025AD.W4	37 x 23	383
4040.W3	37 x 38	632
Marley Ega Tubing		
R5050.GP	44 x 48	950
R7550.GP	69 x 48	1,490
Maxi Trunking		
10075G	96 x 70	3,024
5050AD.G4	47 x 44	931

CONDUIT

Code	Nominal Bore Area mm ²	Capacity mm ² (40%)
01.20 O & G	200	80
01.25 O & G	344	137
01.32 O & G	631	252
01.40 O & G	948	379
01.50 O & G	1,517	606

FLEXIBLE CONDUIT

Code	Nominal Bore Area mm ²	Capacity mm ² (40%)
30.20G	177	80
30.25G	254	115
30.32G	452	204
30.40G	804	362
30.50G	1257	565

TOP HAT CAPPING

Code	Nominal Bore Area mm ²	Capacity mm ² (40%)
60.16.W	16 x 14.5	67
60.38.W	37 x 21	204

DUCTING - uPVC

Code	Nominal Bore Area mm ²	Capacity mm ² (40%)
700.40.6.0	1,194	477
700.50.6.0	2,083	833
700.65.6.0	3,127	1,250
700.80.6.0	4,608	1,843
700.100.6.0	8,462	3,384
700.150.6.0	18,554	7,421

CABLE SIZING TABLE

Single Core Cable Size mm ²	Nominal Overall Cross Sectional Area mm ²
1.0	7
1.5	8
2.5	10
4	15
6	19
10	31
16	42
25	64
35	84
50	114
70	150
95	204
Flat Twin & Earth Size mm ²	Nominal Overall Cross Sectional Area mm ²
1.0	64
1.5	75
2.5	111
4	176
6	219
Flat Twin Cable Size mm ²	Nominal Overall Cross Sectional Area mm ²
1.0	35
1.5	41
2.5	58
4	90
6	113

To determine the size required, add together cross sectional area of the cables to be installed and choose the next highest capacity trunking, conduit, top hat or ducting (depending on the application) as given in the tables above.

CONDUIT

Marley conduit and fittings are manufactured from selected premium resin and impact modifiers. All conduit and fittings are manufactured in accordance with New Zealand and Australian Standard AS/NZS 2053 for medium duty conduit.

Marley conduit exhibits the performance of:

- Compression test at 750N (medium duty)
- Impact test at 2kg from 300mm (heavy duty)

SIZES

Nominal Outside Diameter (mm)	Wall Thickness Nominal (mm)
20	1.95
25	1.95
32	2.25
40	2.25
50	2.25

COLOURS

All conduit sizes up to 50mm are available in both grey and orange.

WEATHER DURABILITY

Marley High Impact Grey Conduit has been developed to meet the durability and weather performance of the NZ Building Code.

Marley High Impact Grey Conduit contains a minimum of 1.5 parts of rutile titanium dioxide pigment per 100 of PVC resin as a proven efficient UV stabiliser for PVC and a specially selected weatherable acrylic impact modifier to add long term toughness and durability.

Although the orange is well established and has the same weatherable impact modifier, the long term outdoor performance of grey conduit will always be superior to orange.

PHYSICAL PROPERTIES/CHEMICAL RESISTANCE

See page 25.

TEMPERATURE

It is recommended that the continuous service temperature does not exceed 60°C or fall below -15°C.

PVC conduit has a relatively high co-efficient of linear expansion (allow for 0.6mm movement/per 10m per °C). Long runs require flexible couplings on each standard length, especially if the run is likely to be subjected to wide temperature variations. To ensure that the coupling performs its proper function saddles should be fixed at not more than 150mm from either side of the coupling.

Saddles should not be tightened to the extent as to prevent thermal movement. Where there are wide temperature variations conduit clips are recommended, with the true expansion being calculated to ensure adequate movement is allowed for.

INSTALLATION OF CONDUIT

The selections of conduit and fittings must comply with NZ Electricity Regulations, 1993. The following information is provided as a guide only.

Marley conduit and fittings are suitable for use in underground installations and industrial applications where impact resistance is required. They are not recommended where they are likely to be subjected to SEVERE mechanical abuse. Installation should be made in conjunction with the New Zealand and/or Australian Electrical Code of Practice.

FIXING

Where conduits are to be surface mounted, secure to the building fabric with correct size saddles or conduit clips using zinc plated or stainless steel screws into wood or masonry anchors. Galvanised or stainless steel screws may be preferred in exterior or corrosive environments while galvanised nails may be used for securing saddles in most interior applications. Conduit saddles should generally be provided close to all joints and at not more than one metre centres.

Where conduits are to be embedded in concrete the conduit should be secured from being displaced during pouring and vibrating by securing to formwork or reinforcing.

BENDING

Marley High Impact Conduit under 25mm diameter can be easily bent cold by inserting the correct size of bending spring. To make bending easier the conduit can be heated by briskly rubbing the area to be bent. It is advisable to bend slightly beyond the angle required and then ease back to the desired position. This relieves stress and reduces the tendency for the conduit to straighten after bending. There is a risk of kinking and damage to the bending spring if the conduit is bent too fast. Having completed the bend it should not be forced backwards as this can result in damage to both the conduit and the bending spring.

For bending larger conduit, warm the conduit by immersing it in boiling water or exposing it to a radiant heat source. It is advisable to make a slow bend around a suitable former and retain the conduit in position until it is set.

The minimum radius for all diameters should not be less than 6 times the conduit diameter. See table below.

Conduit O.D. mm	Minimum Radius (mm)
20	120
25	150
32	200
40	240
50	300

JOINING

Marley PVC conduit and fittings are easily joined with Marley Solvent Cement by adhering to the following four steps:

1. Cut conduit to length with a fine toothed hacksaw or pipe cutters and remove all swarf and burrs, from both OD and ID.
2. Remove all dirt and grease with a clean cloth dipped in Methylated Spirits, or Marley Primer.
3. Coat the socket and then the spigot sparingly with Marley Clear solvent cement and push together immediately.
4. Push together firmly to evenly spread the solvent cement, wipe off any excess solvent immediately. Do not handle the joint for approximately 5 minutes and allow 10 hours of drying time before testing or rough handling.

On large bore conduits it may be found that Marley Gold Solvent Cement (gap fill cement) is desirable.

CABLE CARRYING CAPACITY

See page 25.

FLEXIBLE CONDUIT/uPVC

SERVICE TEMPERATURE

Suitable for applications where temperature does not exceed 60°C or fall below -15°C.

FLEXIBILITY

More flexibility for easier installation. Maintains clear bore when flexed through angle up to 90 degrees.

STRENGTH

Strong protection for cables. Compression test at 750N, change in diameter is less than 20%.

MARKINGS

Metre marked, allows for easy measuring.

WEATHER DURABILITY

Meets requirement of the NZ Building Code Approved Document B2 Clause B2.3. Contains UV inhibitors – suitable for indoor / in-wall application only.

AS/NZS 2053

Conforms AS/NZS 2053.5 1995 Medium Duty.

SIZES

Code	Nominal O/D	Minimum I/D	Colour	Coil Length
30.20G	19.85	14.10	Light Grey	25m
30.25G	24.75	18.30	Light Grey	25m
30.25G	31.75	24.80	Light Grey	25m
30.40G	39.70	31.20	Light Grey	25m
30.50G	49.80	39.60	Light Grey	25m

CONTOUR FLEXIBLE CONDUIT/Polypropylene (PPG)

FLEXIBILITY

Higher flexibility than uPVC flexible conduit. Maintains clear bore when flexed through angle up to 90 degrees.

MARKINGS

Metre marked, allows for easy measuring.

WEATHER DURABILITY

Meets requirement of the NZ Building Code Approved Document B2 Clause B2.3. UV stabilised – suitable for outdoor use.

AS/NZS 2053

Conforms to AS/NZS 2053.5 1995.

HALOGEN FREE

PPG flexible conduit contains no halogens.

ELECTRICAL CABLE DUCTING

MARLEY ELECTRICAL CABLE DUCTING (E.C.D.) – RANGE

Marley Ducting is manufactured from high quality uPVC, and is intended for usage in all buried applications or areas reasonably protected from likely heavy impacts, e.g. underground applications.

SIZES

Type	Nominal Outside Diameter (mm)	Wall Thickness Nominal (mm)
32mm	36.3	2.0
40mm	43.0	2.0
50mm	55.9	2.2
65mm	69.0	2.6
80mm	82.6	3.0
100mm	110.2	3.2
150mm	160.3	3.3

COLOUR

All sizes available in orange. Grey is available in 40, 50, 90, 100, 150 and 200mm sizes if preferred (order as Stormwater Ducting).

PHYSICAL PROPERTIES AND CABLE CARRYING CAPACITY

See page 25.

STANDARDS

Marley Ducting complies with AS/NZS 2053. Specified wall thickness relate to duty rating.

INSTALLATION

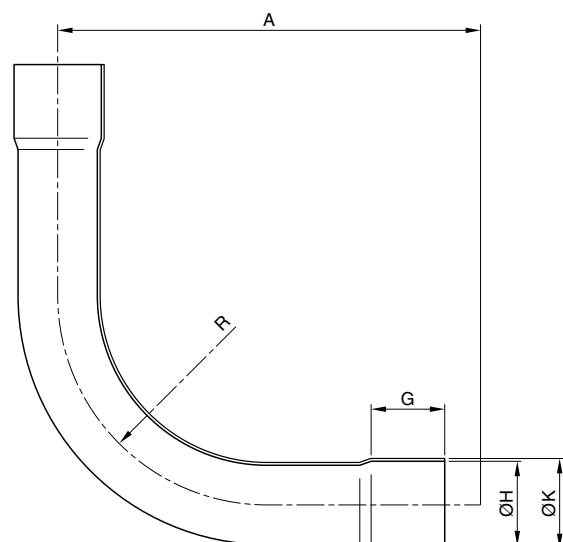
Refer conduit instructions.

N.B. Electrical Cable Ducting is not as resistant to high impact as is conduit. High impact ducting is available subject to minimum order quantities and lead times.

BENDS

Code	Nominal Radius (mm) 90°	Nominal Radius (mm) 45°
703.40.90.0	200	250
703.50.90.0	300	450
703.65.90.0	300	450
703.80.90.0	400	500
703.100.90.0	500	700
703.150.90.0	700	1000

BEND RADIUS



TRUNKING

Marley New Zealand Limited offers a complete cable management system to conceal and protect surface wiring in new applications or for retrofitting domestic, commercial and industrial installations.

All Marley trunking and fittings are manufactured from top quality high impact uPVC and are manufactured in accordance, with AS/NZ 4296 (for cable trunking systems).

Marley Trunking is available in three options:

- Marley Mini Trunking (3m and 4m)
- Marley Ega Tube (3m)
- Marley Maxi Trunking (4m)

LIDS

Trunking from Marley features double-lock clip tops for security and accessibility. Lids are well secured and will not spring off accidentally.

To remove the lid, start with a peeling action from one end. Where lids are butted together, carefully insert a screwdriver blade to enable an initial start to be made. Attempts to remove the lid in one motion along its length or forcing it with a tool under the edge will fail to remove the lid and damage the edge of the trunking.

COLOURS

- The full Mini Trunking range is available in white, with 25 x 16 also available in dark brown.
- Marley Ega Tube comes in a standard light grey (matching the Marley Conduit colour).
- Maxi Trunking is a slightly darker grey.

PHYSICAL PROPERTIES/CHEMICAL RESISTANCE

See page 25.

WEATHER DURABILITY

The Marley uPVC trunking range contains titanium dioxide to provide high UV performance. (Mini trunking = 8pph, Maxi trunking = 1.5pph, Ega tube = 1.5pph).

The trunking compounds have been developed to meet the requirements of the NZ Building Code Durability Clause. With prolonged exposure the polymer will experience a slight reduction in durability.

Marley trunking may be painted using acrylic paints which will enhance the long term weatherability.

INSTALLATION OF TRUNKING

All installation should be in accordance with the Electrical Wiring Regulations 1997. The following is provided as a guide:

MINI TRUNKING

1. When planning the route to be taken, consider drops to sockets, switches and other fittings.
2. Fix the main body of the trunking by drilling through the base and screwing into position with flathead wood or metal screws. Oversized holes should be drilled to allow for expansion/contraction. Suitable contact adhesive can be used where the surface is appropriate. The fitting bases should then be fixed into position.
3. Fixings should be at maximum 500mm centres. At low levels where the trunking may be liable to knocks or for uneven surfaces, 300mm centres are advisable.
4. Wiring can then be installed (hold in place with short offcuts of lid).
5. Cut lids 10mm shorter where fittings are to be used to allow fitting to snap over.
6. Once the wiring is installed, snap lid into place by starting at one end, applying even pressure and work along the length (removing temporary wire supports). Then snap on lids of fittings.
7. Due allowances for expansion/contraction should be made. DO NOT PUSH TRUNKING HARD AGAINST FITTINGS. ALLOW A 0.6mm GAP (APPROX) EVERY 10m, FOR EVERY 1°C RISE IN TEMPERATURE.

MARLEY EGA TUBE

1. Fix trunking in the normal way with flat headed screws or explosive fittings. In either case it is essential that the holes are considerably oversized or elongated to allow for expansion/contraction. Washers should be used under the heads of screws, and rubber washers with explosive bolts. Do not tighten screws to the full extent.
2. Spacings should be at a maximum 1m centres and no further than 100mm from the end of the trunking.
3. Stagger trunking and lid joints to provide greater strength.
4. Wiring can then be installed (hold in place with short offcuts of lid).
5. Once the wiring is in place fix the clip-on lid. Place in position by sliding it onto the trunking at one end, aligning it to the run or the trunking and then curving the lid, at the same time pressing the continuous clip into the trunking gap.
6. Due allowance for expansion/contraction should be made. DO NOT PUSH TRUNKING HARD AGAINST FITTINGS. ALLOW A 0.6mm GAP (APPROX) EVERY 10m, FOR EVERY 1°C RISE IN TEMPERATURE.

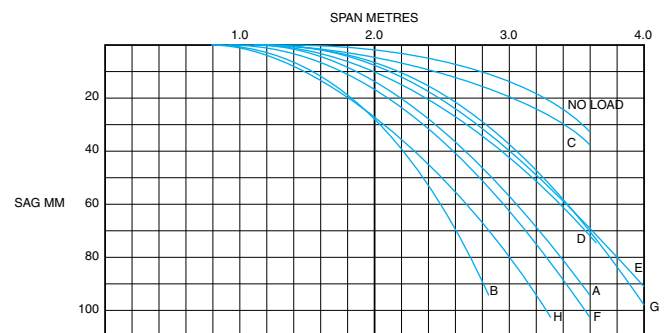
MARLEY MAXI TRUNKING

1. Fix trunking in the normal way with flat headed screws or explosive fittings. In either case it is essential that the holes are considerably oversized or elongated to allow for expansion/contraction. Washers should be used under the heads of screws, and rubber washers with explosive bolts. Do not tighten screws to the full extent.
2. Spacings should be at a maximum 1m centres and no further than 100mm from the end of the trunking.
3. Stagger trunking and lid joints to provide greater strength.
4. Wiring can then be installed (hold in place with short off-cuts of lid).
5. Fittings come complete with lids but DO NOT INCLUDE couplings, these can be purchased separately.
6. Cut lids 10mm shorter where fittings are to be used to allow fittings to snap over.
7. Due allowance for expansion/contraction should be made. DO NOT PUSH TRUNKING HARD AGAINST FITTINGS. ALLOW A 0.6mm GAP (APPROX) EVERY 10m, FOR EVERY 1°C RISE IN TEMPERATURE.

SUSPENSION TABLE

(MARLEY EGA TUBE AND MAXI TRUNKING)

SPAN - SAG RATIO with loads applied



CURVE	CODE	LOAD KG
A	R5050 GP	10
B	R5050 GP	20
A	R7550 GP	10
B	R7550 GP	20
C	R10075 GP	10
D	R10075 GP	20
E	100100 G	10
F	100100 G	20
G	15075 G	10
H	15075 G	20

TOP HAT CAPPING RANGE

Marley New Zealand Limited offers a complete cable management system to conceal and protect surface wiring in new applications or for retrofitting domestic, commercial and industrial installations.

Code	Pack
60.16W	30m (12 x 2.5m)
60.38W	30m (12 x 2.5m)

PHYSICAL PROPERTIES AND CABLE CARRYING CAPACITY

See page 25.

AIR CONDITIONING DUCTING AND FITTINGS

Manufactured from premium grade UV stabilised compound, Marley air conditioning uPVC duct is ideal for New Zealand conditions, which call for high impact strength and toughness.

WEATHER DURABILITY

The air condition range adheres to the recommended manufactured amount of titanium dioxide added for outside applications (5pph). Additionally, UV absorber is incorporated to protect the colour in the product.

ENCLOSURE BOXES

Marley Enclosure Boxes are manufactured from high quality high impact PVC. Designed and manufactured to IP55, they protect enclosed apparatus against dust and moisture. (IP55 = Resistant to jets of water and to dust). IP55 rating achieved when installed according to Marley recommended installation instructions.

They are moulded in two homogenous PVC units and sealed with a flexible PVC gasket. Able to withstand impact, they neither dent nor chip and there is no paint to flake off. They perform well for years in aggressive environments where sheet steel would rust after months. PVC is non-hygroscopic and there are no imbedded glassfibre strands which could suck in moisture.

COLOURS

Marley enclosure boxes are moulded in grey and will match Marley Grey Conduit.

WEATHER DURABILITY

See page 26.

FEATURES

- Lids are fitted with nickel plated screws. The screws are located within the gasketed area to ensure a continuing seal.
- Supplied with neoprene washers for sealing of mounting screws.
- Light weight compared to metal enclosures.
- Larger high lid versions (EE360H and EE362H) include zintec gear plate.
- Machining is easy with normal tools. Punching, drilling, filing, sawing and even ultrasonic welding are easily accomplished.
- All sizes are available either plain sided or with 20 and 25mm knockouts.

APPLICATIONS

- Cable terminating.
- Enclosure of relays, contactors, timers etc.
- Can accommodate push buttons, pilot lights, selector switches, key switches etc.
- Means of connecting fixed head wiring to flexible conductors.

ENCLOSURE BOXES RANGE

Code	Size L x W x H	Pack Quantity	Cable Entries
EE250	100 x 100 x 54mm	1	6 Knock outs
EE256	100 x 100 x 54mm	1	Plain sides
EE354	164 x 129 x 68mm	1	10 Knock outs
EE356	164 x 129 x 68mm	1	Plain sides
EE360	214 x 162 x 92mm	1	10 Knock outs
EE362	214 x 162 x 92mm	1	Plain sides
EE360H (includes zintec gear plate)	214 x 162 x 128mm	1	10 Knock outs - High lid
EE362H (includes zintec gear plate)	214 x 162 x 128mm	1	Plain sides - High lid

HFT CONDUIT & FITTINGS

HALOGEN FREE

HFT conduit & fittings have been tested and confirmed to contain no brominated flame retardants (polybrominated biphenyls and polybromo diphenyl ethers), chlorinated polymers (e.g. uPVC, PVDC, etc.), inorganic halides, or organohalides (detection limit 10mg/kg(ppm)). For full details of testing please refer to www.marley.co.nz

TEMPERATURE

It is recommended that the continuous service temperature does not exceed 110°C or fall below -40°C.

UV PROTECTION

HFT conduit & fittings has UV inhibitors for 5 - 10 years.

CHEMICAL RESISTANCE

HFT conduit & fittings are resistant to a wide range of chemicals. For full details of chemical resistance please refer to www.marley.co.nz

RESISTANCE TO BURNING

HFT conduit & fittings is classified by the AS/NZS 2053 standard as a 'non-flame propagating' conduit which does not support combustion

SAFETY

HFT conduit & fittings are non-conductive and there is no risk of becoming live.

JOINING

Conduit and fittings are easily joined with 3MTM Scotch-Weld™ Structural Plastic Adhesive DP8010 or DP8005. These are two-part acrylic-based adhesives (10:1 ratio by volume) that can bond many low surface energy plastics without special surface preparation. DP8010 has a long work life (up to 10 minutes) whilst DP8005 has a reduced work life of 3 minutes. Both solvents achieve handling strength in about 2 hours.

- 1) Apply adhesive to clean, dry substrates, which are free of paint, oxide films, oils, dust, mold release agents and all other surface contaminants.

35 ml Cartridge: Place duo-pak cartridge in EPX applicator. Remove cap. Dispense and discard a small amount of adhesive to assure even ratio and free flow. Clear orifice if necessary. Use only orange 10:1 mixing nozzle by: (a) aligning nozzle notch with cartridge recess, and (b) twisting into place. Dispense and discard a small amount of adhesive through nozzle until the adhesive is mixed.

- 2) After the adhesive is applied, substrates must be mated within the work-life of the adhesive or sooner for one-sided applications. Adhesive thickness less than .127mm will yield unpredictable results. The joint design of the substrates should facilitate a .127mm to .203mm adhesive thickness at the bondline. Adhesive contains .203mm micropheres for this purpose.
- 3) The bonded surfaces should be fixtured, or clamped, for at least 2 hours. The clamping pressure should be sufficient to keep the surfaces in contact during cure (typically 0.275-0.552 bar). Plastic parts can be designed to be self- fixturing, negating the need for external fixturing.

Note: Heating the bondline to 66-80°C for 30 minutes will speed up curing. Assembled parts must remain at room temperature for 10 minutes prior to heating to allow more adhesive penetration into the substrates before heat-accelerated cure.

- 4) Cured adhesive appearance: the adhesive will yellow with time, a rippling effect in the adhesive as it cures is normal and indicates that the adhesive is mixed properly and curing normally.

For further details of Scotch-Weld™ DP8010 or DP8005 and its material safety data sheet (MSDS) please refer to either www.marley.co.nz or www.3m.com.au

INSTALLATION OF CONDUIT

The selections of conduit and fittings must comply with NZ Electricity Regulations, 1993. Installation should be made in conjunction with the New Zealand and/or Australian Electrical Code of Practice.

PRICES:

This price list cancels all previous price lists. All prices are subject to alteration without notice. Possession of this price list, a company catalogue or other leaflet is not to be considered as an offer to sell any product to the holder or at the prices stated. Prices quoted within this price list are subject to the addition of goods and services tax (GST).

The resale prices set out or referred to herein are recommended maximums only and other prices may be charged without the risk of incurring sanctions of any kind.

PAYMENT TERMS:

In the event of the Supplier granting credit facilities to the Customer then the following terms shall apply:

- (a) All accounts are to be settled in full no later than the 20th day of the month following invoice.
- (b) That should the Customer default in payment of any monies due under this agreement then all monies due to the Supplier shall immediately become due and payable and shall be paid by the Customer within SEVEN (7) days of the date of demand and the Supplier shall be entitled to charge interest at the rate then applicable to bank overdraft on businesses of the same kind as the Customer's plus 2% on all overdue accounts from the date of due payment until the date of actual payment.
- (c) Any expenses costs or disbursements incurred by the Supplier in recovering any outstanding monies including debt collection agency fees or legal fees, shall be recoverable from the Customer.
- (d) The Supplier shall be entitled without notice to terminate any credit arrangement with the Customer in the event of the Customer defaulting in any of the terms and conditions herein contained.
- (e) The Supplier shall be entitled at any stage during the continuancy of this Agreement to request such security or additional security as the Supplier shall in its discretion think fit and shall be entitled to withhold supply of goods or credit arrangements until such security or additional security shall be obtained.

The Customer hereby acknowledges that the goods supplied by the Supplier shall remain the property of the Supplier until the Supplier receives payment for same. As from delivery the goods shall be at the Customer's risk AND the Customer shall retain and preserve such goods in new condition and shall ensure that all serial numbers, identification marks, stickers and packaging shall be kept intact with such goods until they have been sold in the normal course of business. The Supplier hereby agrees to allow the Customer to deal, sell or trade with the goods in the normal course of business and for the Customer to retain the sale proceeds of such sale or dealing provided that the Customer adheres to the terms and conditions of this agreement. In the event of the Customer defaulting in any of the terms of this Agreement, then the Supplier shall have the right (without giving notice) to retake possession of the goods supplied to the Customer by the Supplier and the Customer hereby authorises and allows the Supplier or its representatives, servants, agents, or employees to enter the premises upon which the goods are housed or stored for the purpose of retaking possession of same and the Supplier shall not be liable for any costs.

AVAILABILITY:

All orders and promises of delivery are given in good faith and on the condition of labour, material, and transport being available and without responsibility for delays arising through risks and uncertainties of manufacture, strikes, accidents or other causes beyond our control. Goods are only sold on these Conditions of Sale and any terms or conditions expressed in a customer's orders are expressly excluded.

DELIVERY:

All normal deliveries are freight paid into stockist stores (FIS) unless otherwise specifically stated or advised.

CLAIMS:

All claims for product damaged at point of delivery should be noted on freight docket and advised to Marley within 7 days.

RETURNS:

All returns are in first-instance to be referred to the Area Sales Representative or the Area Sales Office with the relevant information. Product will not be accepted back into our warehouse without prior arrangement. Product that is returned excess to Merchants requirements will incur a 15% charge to cover freight, re-warehousing and credit issue. Product will only be accepted in pack or carton lots. Any damaged or marked product will not be credited.



AS/NZS 2053
License No 2297

All Marley conduit products comply
with New Zealand Standards.



DISCLAIMER

This price book has been compiled by Marley New Zealand Limited ("The Company") and is supplied subject to acknowledgment of the following conditions:

The price book is protected by Copyright and may not be copied or reproduced in any form or by any means in whole or in part without prior consent in writing by the Company. Prices are subject to change, product specifications, usage data and advisory information may also change from time to time with advances in research and field experience. The Company reserves the right to make such changes to price or product information at any time without notice. Correct usage of the Company's products involve engineering judgements which cannot be properly made without full knowledge of all the conditions pertaining to each specific installation. The Company expressly disclaims all and any liability to any person whether supplied with this publication or not in respect of anything and of the consequences of anything done or omitted to be done by any such person in reliance whether whole or partial upon the whole or any part of the contents of this publication. No offer to trade, nor any conditions of trading, are expressed or implied by the issue or content of this manual. Nothing herein shall override the Company's Conditions of Sale, which may be obtained from the Registered Office or any Sales Office of the Company. This price book is and shall remain the property of the Company, and shall be surrendered on demand to the Company.

AUCKLAND - Mahia Road, Manurewa,
Private Bag 802, Manurewa.

Sales Department Tel: 09 279 2777

Direct Fax: 09 279 2778

Freefax: 0800 652 621

Head Office Tel: 09 279 2799

Fax: 09 279 2798

FREEPHONE: 0800 627 539

CHRISTCHURCH

Shands Road, Hornby,
PO Box 16233 Christchurch.

FREEPHONE: 0800 627 539

For more information: **FREEPHONE 0800 MARLEY (0800 627 539)**

www.marley.co.nz

an *Aliaxis* company

 **MARLEY®**