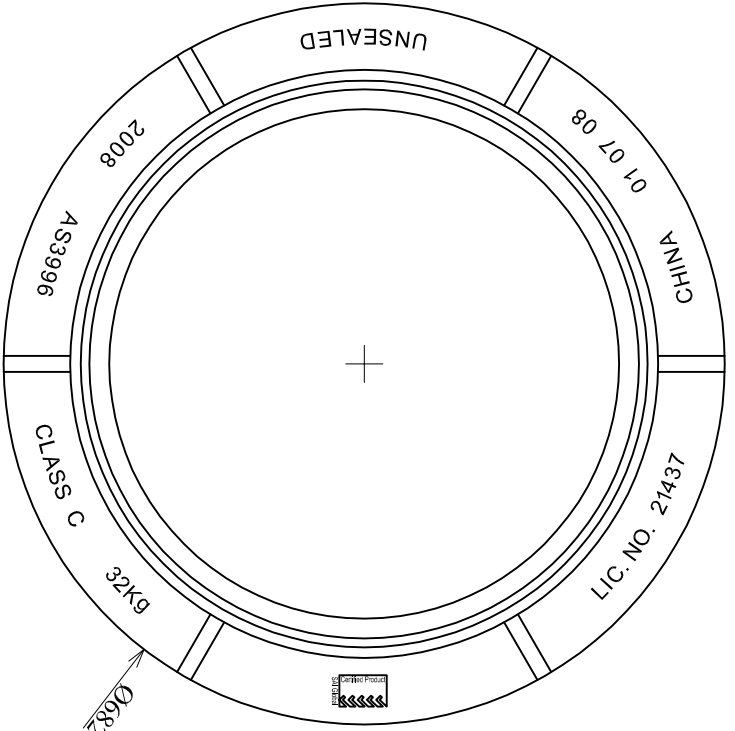
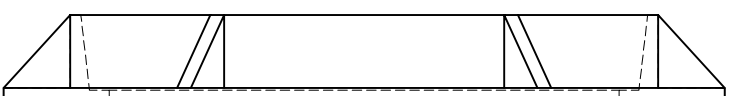


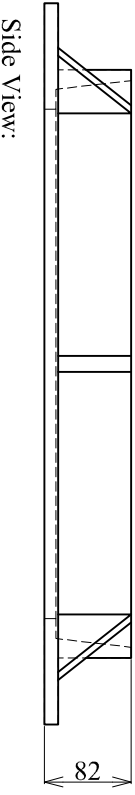
Frame:



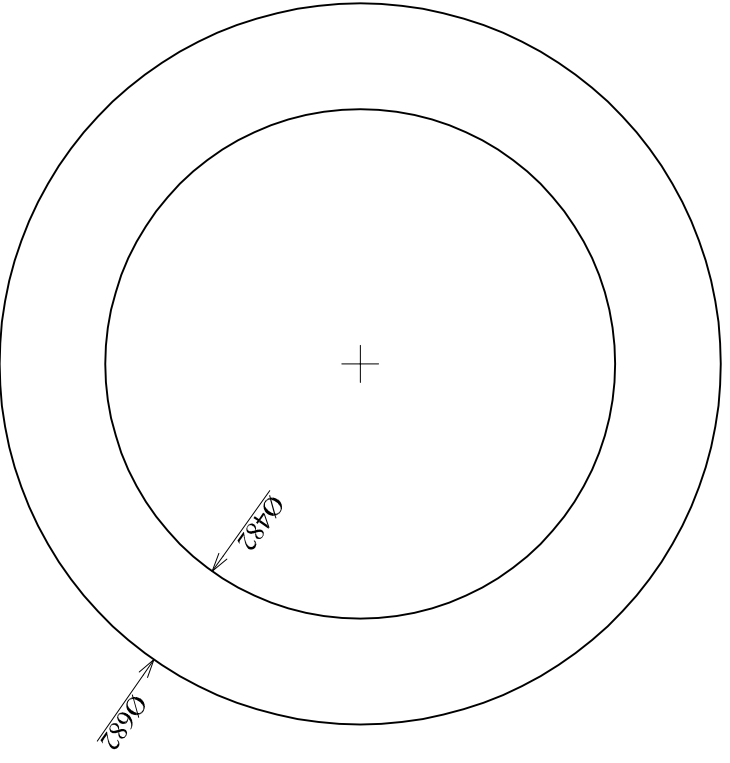
Plan View:



End View:

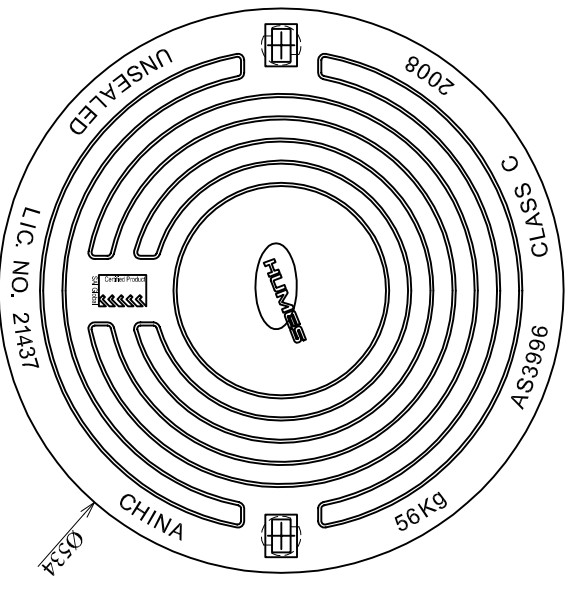


Side View:

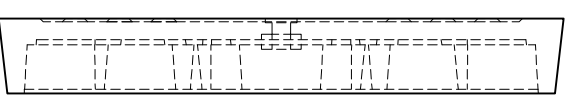


Bottom View:

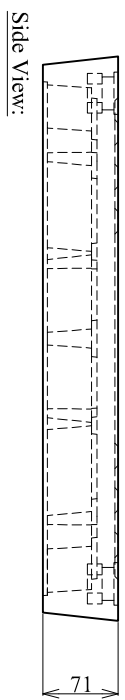
Cover:



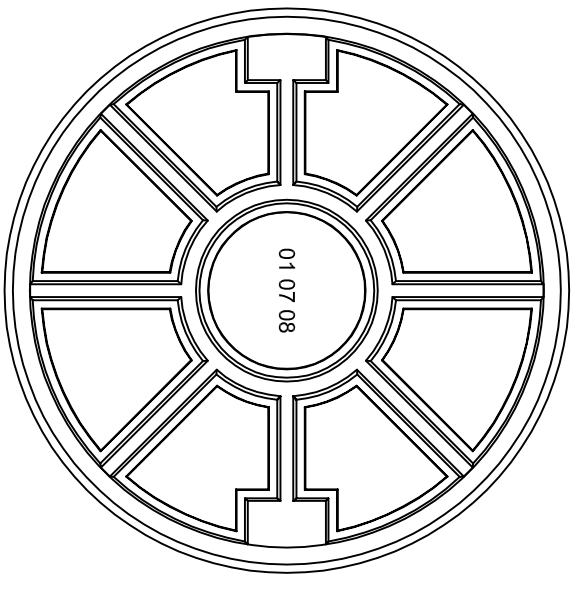
Plan View:



End View:



Side View:



Bottom View:

K & A Design Ltd.
 PO Box 2030
 Wanganui
 Ph: 06 344 6414
 Fax: 06 344 6415
 Mobile: 027 457 8380

These designs and drawings are the property of K & A Design Ltd, as is the intellectual property. If you wish to copy these drawings, you must have permission and the copies would be for the use of that company only.

Material Specification:
 - Grey Iron: AS1830 Grade T225

Material Specification:
 - Ductile Iron: AS1831 Grade 500/7

Modify:
 10. Frame material changed to Grade T225

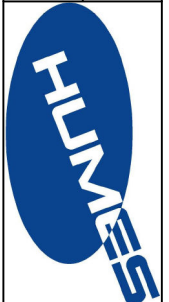
Related Drawings:
 8387-01 & 8389-02

Item No: 78294
 Drawing No: 8387-00

ALL DIMENSIONS IN MM

Designed by: BC
 Drawn By: BC
 Date: 25/03/2009

Standard: A3
 Kevin Lance Englebreton
 LTNZ ID: KLE HVEA, HVFC, HVET, HVSI, HVSI2



Humes Pipeline Systems
 www.humes.co.nz