



# AVK HANDWHEEL

08

Handwheel for resilient seat gate valves DN50 to DN600

**Use:**

- For gate valves, non-rising stem, inside scREW type

**Note:**

Can not be used for:

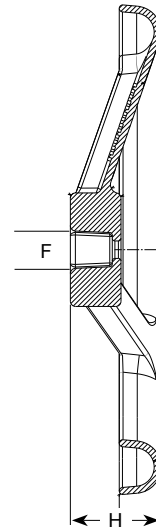
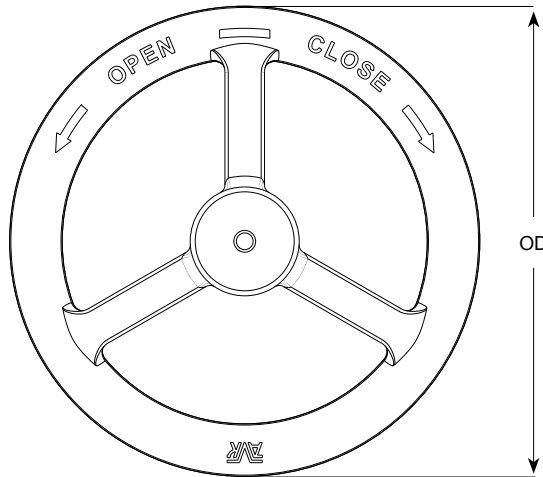
- OS&Y gate valves
- Series 57/42 and 57/43 ISO mounting pad valves



CC



ACC



## Reference nos. and dimensions

AVK ref. nos. CC	ACC	TO SUIT SERIES				OD mm	F mm	H mm	Weight kilos
		57/40 PN16	57/90 PN16	57/80 PN25	55 PN16				
08-1000-7122	08-1000-71221	50-100	-	50-100	-	280	19	50	2.3
08-0800-7122	08-0800-71221	-	50-100	-	-	225	17	48	1.5
08-1000-8122	08-1000-81221	-	150	-	-	280	24	52	2.3
08-2000-7122	08-2000-71221	150	200	150	-	360	24	56	5.9
08-2500-7122	08-2500-71221	200-300	225-300	200-300	-	500	27	57	9.2
08-4000-7122	08-4000-71221	375-400	-	-	-	640	32	58	15.6
08-6000-7122*	08-6000-71221*	-	-	-	450-600	640	32	58	15.6

The designs, materials and specifications shown are subject to change without notice due to the continuous development of our product program.

