

Universal straight coupling to WSA 105 short - and long barrel
For cast iron, ductile iron, steel, PVC-U, PVC-M and PVC-O pipes and asbestos cement pipes

Use:

For water and sewage applications to max. 40°C
 Angular deflection of ±4 degrees (total 8 degrees)
 16 bar / 160 metres allowable operating pressure (AOP)
 Non tensile
 This product provides no longitudinal joint restraint

Approvals:

All materials are AS/NZS 4020 compliant

Materials:

Gland rings, barrel	Ductile iron, AS 1831 Gr. 500-7
Coating	Fusion bonded epoxy to AS/NZS 4158
Rubber seals	Water: EPDM to AS 1646, AS/NZS 4020 compliant
Nuts	SS 316, PTFE coated
Washers	SS 316
Bolts	SS 316



AVK Australia's website contains the latest product information and data sheets.

Designs, materials and specifications shown are subject to change without notice due to our continuing program of product development.



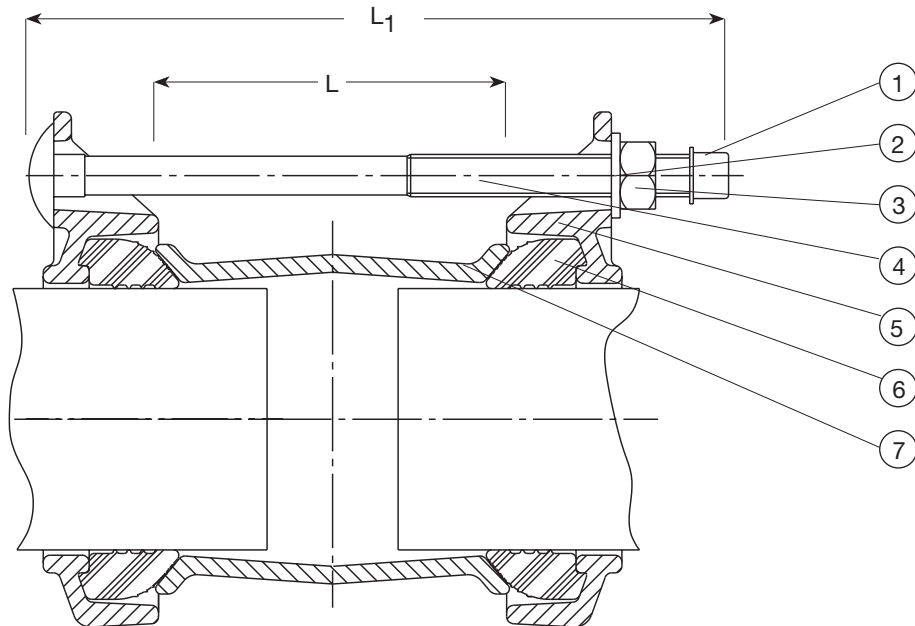
AVK Australia Pty Ltd
 559A Grand Junction Road, Wingfield, SA 5013 Australia
 Tel: +61 8 8368 0900
 Fax: +61 8 8368 0970
 E-mail: info@avkvalves.com.au
 www.avkvalves.com.au
 Copyright© AVK Group A/S 2009

3N601XHQ
 May 2009

Universal straight coupling to WSA 105 short - and long barrel
 For cast iron, ductile iron, steel, PVC-U, PVC-M and PVC-O pipes and asbestos cement pipes

Component list

- | | | | |
|------------|---------|----------------|-----------|
| 1. End cap | 3. Nut | 5. Gland ring | 7. Barrel |
| 2. Washer | 4. Bolt | 6. Rubber seal | |



Ref. nos.	DN	Short barrel L mm	Long barrel L mm	Short barrel L1 mm	Long barrel L1 mm	Sealing range mm	Bolts	Short barrel Weight kilos	Long barrel Weight kilos
601-06300X-4-312	40	100	175	190		46-63	2	2.9	
601-07400X-4-312	50	100	175	190		57-74	2	2.9	
601-08500X-4-312	65	100	175	190		68-85	4	3.9	
601-10600Z-4-312	80	100	175	190	270	84-106	3 or 4	4.9	6.4
601-11900X-4-312	100	100	175	190		99-119	4	5.2	
601-13300Z-4-312	100	100	175	190	270	109-133	3 or 4	5.5	7.2
601-15700X-4-312	125	100	175	190		132-157	4	6.5	
601-18300Z-4-312	150	115	175	210	270	157-183	3 or 4	7.5	9.7
601-20100X-4-312	150	115	175	210		176-201	4	9.0	
601-21500X-4-312	200	115	175	210		193-215	4	9.4	
601-24200X-4-312	200	140	175	230	270	218-242	4	11.3	14.1
601-26800X-4-312	225	140	175	230	270	242-268	6	13.4	16.1
601-29200X-4-312	250	160	175	250	270	266-292	6	15.5	18.2
601-30600X-4-312	250	160	215	250		280-306	6	14.6	
601-32700X-4-312	300	160	215	250		301-327	6	16.4	
601-35000X-4-312	300	160	215	250	305	324-350	6	16.5	23.9
601-37800X-4-312	350	160	215	250		352-378	8	19.9	
601-39600X-4-312	350	160	215	250		372-396	8	20.3	
601-41000X-4-312	350	160	215	250		384-410	8	21.1	
601-43600X-4-312	400	160	215	250	305	410-436	8	21.8	27.9
601-46200X-4-312	400	160	215	250		436-462	8	23.5	

X: 0 = Short Barrel Z: 0 = 4 Bolts, Short Barrel
 1 = Long Barrel 1 = 4 Bolts, Long Barrel
 2 = 3 Bolts, Short Barrel
 3 = 3 Bolts, Long Barrel