



Streetware



A total solution
in streetware



Humes Certified Streetware





Humes products are manufactured to meet the stringent requirement of AS3996 – Access Covers and Frames.

As well as being manufactured to this standard, we also certify the products using third party accreditation through SAI Global. With many local bodies now adopting this standard, you can count on Hume’s products to deliver outstanding performance in all your applications.



AS3996 classifies products into different areas using a load classification system.

This system is as follows:-

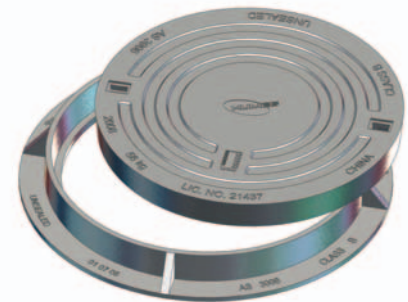
| Class | Typical Use | Nominal Wheel Loading (Kg) | Ultimate Load (kN) |
|---|--|----------------------------|--------------------|
|  A10 <ul style="list-style-type: none"> • Pedestrians • Cyclists | Areas (including footways) accessible only to pedestrians and pedal cyclists and closed to other traffic | 330 | 10 |
|  B80 <ul style="list-style-type: none"> • Passenger vehicles • Light vehicles | Areas (including footways and light tractor paths) accessible to vehicles (excluding commercial vehicles) or livestock | 2670 | 80 |
|  C150 <ul style="list-style-type: none"> • Heavy commercial vehicles • Slow moving | Malls and areas open to slow moving commercial vehicles | 5000 | 150 |
|  D210 <ul style="list-style-type: none"> • Heavy commercial vehicles | Carriageways of roads and areas open to commercial vehicles | 8000 | 210 |

The above information is given as a guide only. At all times, design considerations need to be assessed on individual installations.



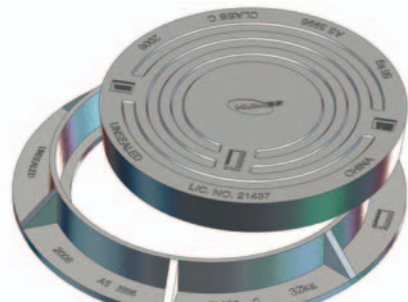
Class B Manhole Set

| | |
|---------------------|-------|
| Item # | 78295 |
| Class | B |
| Clear Opening (mm) | 502 |
| Frame Diameter (mm) | 648 |
| Lid Diameter (mm) | 536 |
| Frame Depth (mm) | 66 |
| Lid Depth (mm) | 53 |
| Weight (Kg) | 60 |



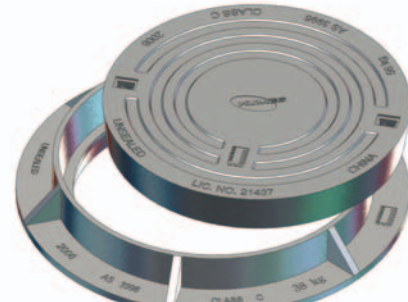
Class C Manhole Set

| | |
|---------------------|-------|
| Item # | 78294 |
| Class | C |
| Clear Opening (mm) | 482 |
| Frame Diameter (mm) | 682 |
| Lid Diameter (mm) | 534 |
| Frame Depth (mm) | 82 |
| Lid Depth (mm) | 71 |
| Weight (Kg) | 88 |



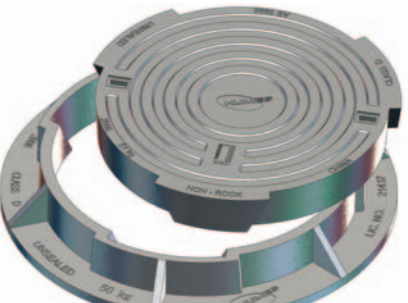
Class C Manhole Set – Spigoted Frame

| | |
|---------------------|-------|
| Item # | 78297 |
| Class | C |
| Clear Opening (mm) | 484 |
| Frame Diameter (mm) | 682 |
| Lid Diameter (mm) | 534 |
| Frame Depth (mm) | 117 |
| Lid Depth (mm) | 71 |
| Weight (Kg) | 94 |



Class D Manhole Set – Non-Rock

| | |
|---------------------|-------|
| Item # | 78326 |
| Class | D |
| Clear Opening (mm) | 512 |
| Frame Diameter (mm) | 688 |
| Lid Diameter (mm) | 510 |
| Frame Depth (mm) | 92 |
| Lid Depth (mm) | 76 |
| Weight (Kg) | 101 |



Class D Ductile Iron Manhole Cover set

| | |
|---------------------|-------|
| Item # | 78250 |
| Class | D |
| Clear Opening (mm) | 600 |
| Frame Diameter (mm) | 810 |
| Lid Diameter (mm) | 682 |
| Frame Depth (mm) | 102 |
| Lid Depth (mm) | 47 |
| Weight (Kg) | 80 |



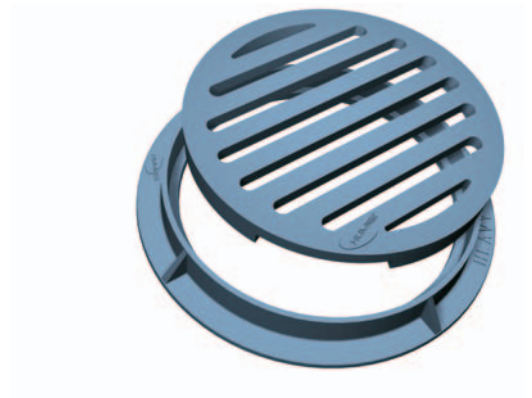
Class D Ductile Iron Locking Manhole Set

| | |
|---------------------|-------|
| Item # | 78255 |
| Class | D |
| Clear Opening (mm) | 600 |
| Frame Diameter (mm) | 810 |
| Lid Diameter (mm) | 682 |
| Frame Depth (mm) | 102 |
| Lid Depth (mm) | 47 |
| Weight (Kg) | 80 |



Grate and Frame Sets

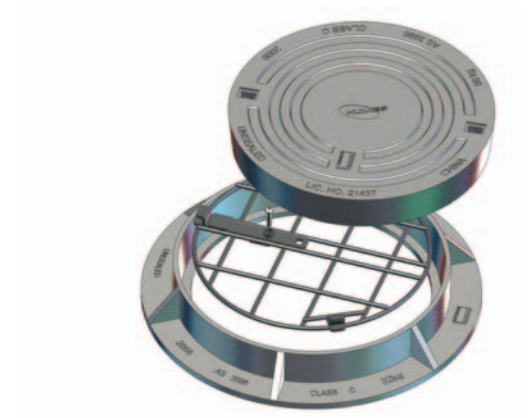
| Description | Heavy Duty | Light Duty |
|---------------------|------------|------------|
| Item # | 74873 | 74860 |
| Clear Opening (mm) | 482 | 502 |
| Frame Diameter (mm) | 680 | 648 |
| Lid Diameter (mm) | 534 | 535 |
| Frame Depth (mm) | 82 | 67 |
| Lid Depth (mm) | 70 | 50 |
| Weight (Kg) | 78.7 | 50.6 |



Manhole Safety Grill

For complete manhole safety, the new Humes Safety grill prevents falls and access to manholes. Available in either galvanised or stainless steel in either a 500mm or 610mm size with a locking option. Designed to be retrofitted to most manholes, the safety grill has been independently tested to a weight loading of 500KG.

| Description | Item Code |
|--|-----------|
| Manhole Safety Grill 500 Galvanised | 48502 |
| Manhole Safety Grill 500 316 Stainless Steel | 48503 |
| Manhole Safety Grill 610 Galvanised | 48504 |
| Manhole Safety Grill 610 316 Stainless Steel | 48505 |



The Complete Manhole Solution

The Class D Ductile Iron Manhole Sets are designed specifically for the new VT concrete manholes systems.

The VT manhole sets the standard in design with:-

- Better health and safety with easier to use components
- More flexibility in base options and installation
- Factory made manhole benching which means better water conductivity
- Meets AS 4198:1994 standard for structural performance and AS/NZS 4058: 2007 for water tightness.

Humes new VT DN1050 sealed modular manhole system for both sewer and stormwater applications delivers on all of the above.

For more information please refer to VT Manhole Brochure.



Base Options

800 Base

The 800mm high sewer manhole base is pre-benched with soft spots to accommodate pipes with nominal internal diameters up to 150mm. With formed straight through, 45° and 90° channels, there is no need for messy and time consuming onsite benching practices.



1100 Base

The new 1100mm high stormwater base has soft spots which will accommodate pipes with nominal internal diameter up to DN375mm. This base requires benching to suit the specific pipe configuration.



Conical Lids

670mm high conical lids have been tested for structural performance as per AS 4198:1994 standard and are designed to deliver a Class D load rating of 210KN. The conical lid can provide a complete manhole option when combined with a base. The entry point aligns with the wall of the manhole to make entry directly down the step face of the risers. The conical profile reduces from 1050 to a 610mm opening and streetware can be directly epoxied in to the rebated top of the conical lid. Standard adjustment rings are also available for finer height adjustments.



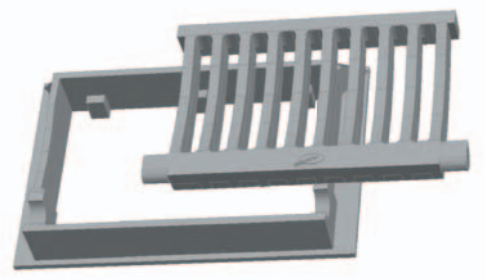
Class D Grate and Frame set

| | |
|-----------------------|-----------|
| Item # | 78287 |
| Opening Nominal (mm) | 675 x 450 |
| Frame Dimensions (mm) | 738 x 532 |
| Grate Size (mm) | 668 x 427 |
| Frame Depth (mm) | 50 |
| Lid Depth (mm) | 55 |
| Weight (Kg) | 60 |



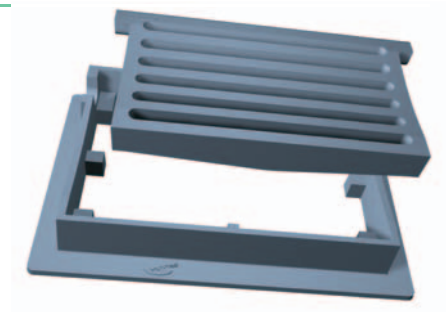
Frame and Grate Set

| | |
|-----------------------|-----------|
| Item # | 74843 |
| Opening Nominal (mm) | 675 x 450 |
| Frame Dimensions (mm) | 830 x 531 |
| Grate Size (mm) | 640 x 430 |
| Frame Depth (mm) | 120 |
| Lid Depth (mm) | 72 |
| Weight (Kg) | 129.6 |



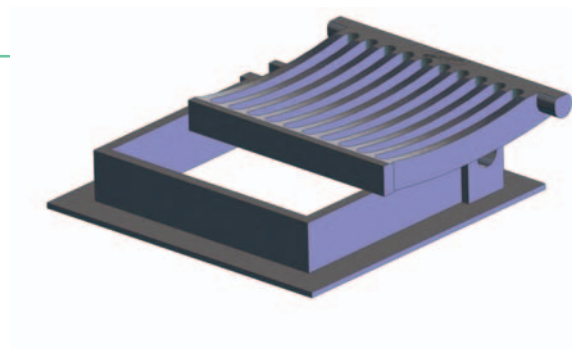
Frame and Grate set

| | |
|-----------------------|-----------|
| Item # | 74840 |
| Opening Nominal (mm) | 650 x 425 |
| Frame Dimensions (mm) | 800 x 530 |
| Grate Size (mm) | 640 x 403 |
| Frame Depth (mm) | 114 |
| Lid Depth (mm) | 86 |
| Weight (Kg) | 76.8 |



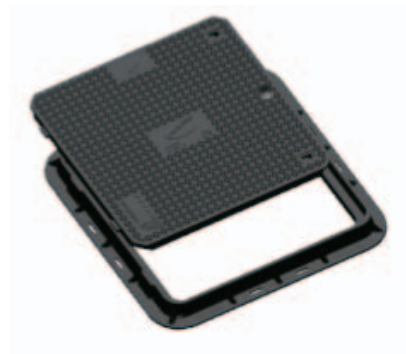
Frame and Grate Set

| | |
|-----------------------|-----------|
| Item # | 74824 |
| Opening Nominal (mm) | 450 x 450 |
| Frame Dimensions (mm) | 594 x 582 |
| Grate Size (mm) | 438 x 430 |
| Frame Depth (mm) | 102 |
| Lid Depth (mm) | 55 |
| Weight (Kg) | 69 |



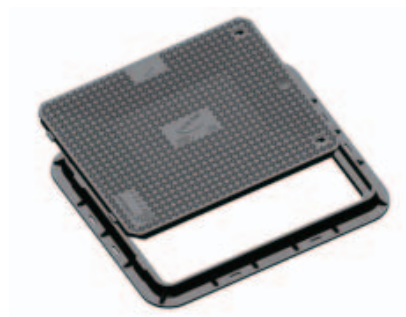
Class B Composite Access Cover

| | |
|--------------------|-----------|
| Item # | 90800 |
| Clear Opening (mm) | 600 x 600 |
| Frame Width (mm) | 758 |
| Cover Width (mm) | 644 |
| Frame Depth (mm) | 758 |
| Cover Depth (mm) | 644 |
| Weight (Set) (Kg) | 24 |



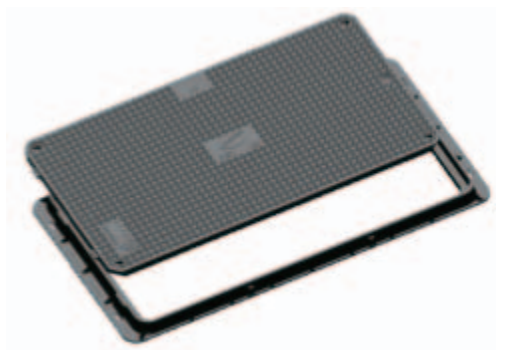
Class B Composite Access Cover

| | |
|--------------------|-----------|
| Item # | 90818 |
| Clear Opening (mm) | 600 x 750 |
| Frame Width (mm) | 908 |
| Cover Width (mm) | 794 |
| Frame Depth (mm) | 758 |
| Cover Depth (mm) | 644 |
| Weight (Set) (Kg) | 31.5 |



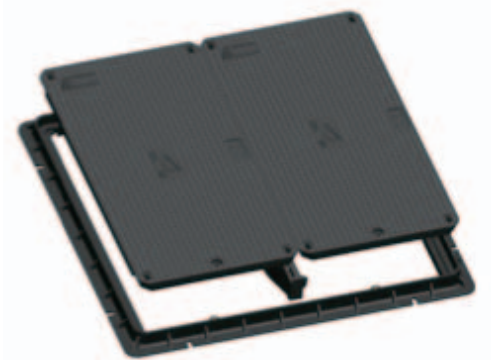
Class B Composite Access Cover

| | |
|--------------------|------------|
| Item # | 90803 |
| Clear Opening (mm) | 600 x 1200 |
| Frame Width (mm) | 1732 |
| Cover Width (mm) | 1244 |
| Frame Depth (mm) | 700 |
| Cover Depth (mm) | 644 |
| Weight (Set) (Kg) | 37.5 |



Class B Composite Access Cover

| | |
|--------------------|-------------|
| Item # | 90813 |
| Clear Opening (mm) | 1200 x 1200 |
| Frame Width (mm) | 1402 |
| Cover Width (mm) | 1288 |
| Frame Depth (mm) | 1358 |
| Cover Depth (mm) | 1244 |
| Weight (Set) (Kg) | 87 |



*Also requires item 90814 crossbar to complete set

For further technical details or advice freephone
0800 502 112 or visit www.humes.co.nz

Buyers and users of the products described in this brochure must make their own assessment of the suitability and appropriateness of the products for their particular use and the conditions in which they will be used. All queries regarding product suitability, purpose or installation should be directed to the nearest Humes Sales Centre for service and assistance. © Fletcher Concrete and Infrastructure Limited 2011. Printed 04/11.

