

# Reducers



This comprehensive range of fittings are designed to meet the requirements of the joint AS/NZS 2280 standard. This standard ensures that all pipe fittings have consistent dimensions and manufacturing tolerances, and are fully interchangeable with other AS/NZS 2280 fittings.

## End features

### Flanged ends

Flanged ductile iron reducers are drilled to standard AS 4087 or with special drillings as required.

### Dualseal™

Dualseal™ is a range of socketed rubber ring joint end connections, for ductile iron fittings. The interchangeable dual rubber seal allow the same fitting to be used for pipes with a common nominal bore with varying outside diameters, such as series 1 and series 2 PVC pipes, ductile iron and steel pipe.

## Features

- Complies to AS/NZS 2280 Standard
- Compatible with all current pipe types
- Drilled standard to comply with AS 4087
- High strength light weight ductile iron construction

## Options

- Multiple end configurations
- 165 PCD hydrant drilling





## Reducers (Flange/Flange & Concentric & Eccentric)

### Description

Ductile Iron Reducers

### Use

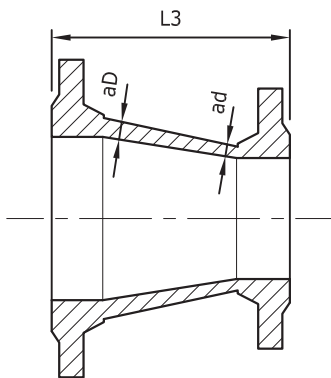
For use with potable & non-potable water or waste

### Manufacturing Standard

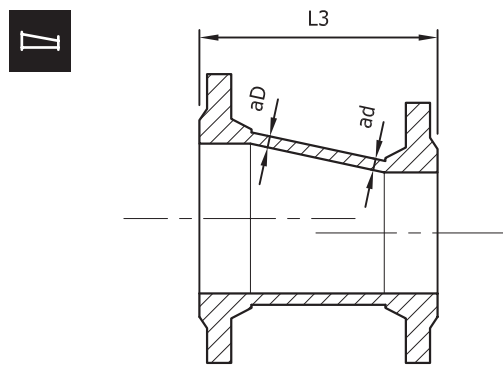
Manufactured to AS/NZS 2280

### Coating

Coated to AS/NZS 4158



Flange/Flange (Concentric)



Flange/Flange (Eccentric/Offset)

## Dimensions

| Nominal Size<br>mm |      | PN 35<br>(aD) | PN 35<br>(ad) | (L3) |
|--------------------|------|---------------|---------------|------|
| (DN)               | (dn) | mm            | mm            |      |
| 100                | 80   | 8             | 8             | 165  |
| 150                | 80   | 9             | 8             | 298  |
| 150                | 100  | 9             | 8             | 235  |
| 200                | 100  | 10            | 8             | 368  |
| 200                | 150  | 10            | 9             | 248  |
| 225                | 100  | 10            | 8             | 432  |
| 225                | 150  | 10            | 9             | 311  |
| 225                | 200  | 10            | 10            | 190  |
| 250                | 100  | 10            | 8             | 495  |
| 250                | 150  | 10            | 9             | 375  |
| 250                | 200  | 10            | 10            | 254  |
| 250                | 225  | 10            | 10            | 190  |
| 300                | 100  | 11            | 8             | 629  |
| 300                | 150  | 11            | 9             | 508  |
| 300                | 200  | 11            | 10            | 387  |
| 300                | 225  | 11            | 10            | 324  |
| 300                | 250  | 11            | 10            | 260  |

| Nominal Size<br>mm |      | PN 35<br>(aD) | PN 35<br>(ad) | (L3) |
|--------------------|------|---------------|---------------|------|
| (DN)               | (dn) | mm            | mm            |      |
| 375                | 200  | 12            | 10            | 584  |
| 375                | 225  | 12            | 10            | 521  |
| 375                | 250  | 12            | 10            | 457  |
| 375                | 300  | 12            | 11            | 337  |
| 450                | 250  | 13            | 10            | 660  |
| 450                | 300  | 13            | 11            | 540  |
| 450                | 375  | 13            | 12            | 356  |
| 500                | 250  | 14            | 10            | 787  |
| 500                | 300  | 14            | 11            | 667  |
| 500                | 375  | 14            | 12            | 483  |
| 500                | 450  | 14            | 13            | 305  |
| 525                | 250  | 14            | 10            | 857  |
| 525                | 300  | 14            | 11            | 737  |
| 525                | 375  | 14            | 12            | 552  |
| 525                | 450  | 14            | 13            | 375  |
| 525                | 500  | 14            | 14            | 248  |
| 600                | 300  | 18            | 11            | 934  |

| Nominal Size<br>mm |      | PN 35<br>(aD) | PN 35<br>(ad) | (L3) |
|--------------------|------|---------------|---------------|------|
| (DN)               | (dn) | mm            | mm            |      |
| 600                | 375  | 15            | 12            | 749  |
| 600                | 450  | 15            | 13            | 572  |
| 600                | 500  | 15            | 14            | 444  |
| 600                | 525  | 15            | 14            | 387  |
| 675                | 375  | 16            | 12            | 950  |
| 675                | 450  | 16            | 13            | 770  |
| 675                | 500  | 16            | 14            | 660  |
| 675                | 525  | 16            | 14            | 593  |
| 675                | 600  | 16            | 15            | 415  |
| 750                | 375  | 18            | 12            | 1180 |
| 750                | 450  | 18            | 13            | 1000 |
| 750                | 500  | 18            | 14            | 885  |
| 750                | 525  | 18            | 14            | 825  |
| 750                | 600  | 18            | 15            | 645  |
| 750                | 675  | 18            | 16            | 395  |

### Notes

1. Minimum wall thickness for other pressure classifications shall comply with AS/NZS 2280:2004 – Clauses 1.6.3.
2. For details of flanges, see AS 4087.



## Reducers (Socket/Socket & Socket Flange)

### Description

Ductile Iron Reducers

### Use

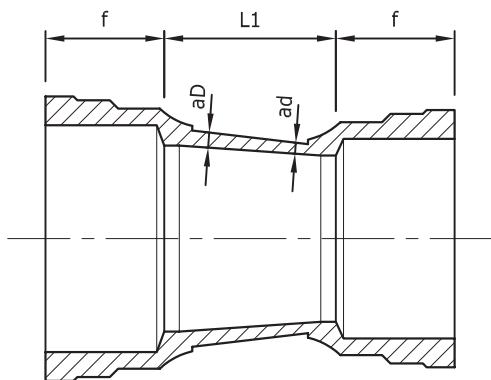
For use with potable & non-potable water or waste

### Manufacturing Standard

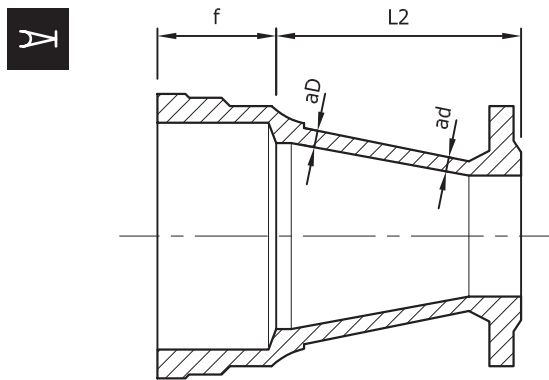
Manufactured in accordance with AS/NZS 2280

### Coating

Coated to AS/NZS 4158



Socket/Socket



Socket/Flange

## Dimensions

| Nominal Size<br>mm | PN 35<br>(aD) | PN 35<br>(ad) | (h) | (L)     |
|--------------------|---------------|---------------|-----|---------|
| (DN)               | (dn)          | mm            | mm  | mm      |
| 100                | 80            | 8             | 8   | 105 125 |
| 150                | 80            | 9             | 8   | 230 250 |
| 150                | 100           | 9             | 8   | 170 190 |
| 200                | 100           | 10            | 8   | 295 315 |
| 200                | 150           | 10            | 9   | 170 200 |
| 225                | 100           | 10            | 8   | 365 385 |
| 225                | 150           | 10            | 9   | 235 270 |
| 225                | 200           | 10            | 10  | 110 155 |
| 250                | 100           | 10            | 8   | 425 445 |
| 250                | 150           | 10            | 9   | 300 330 |
| 250                | 200           | 10            | 10  | 175 215 |
| 250                | 225           | 10            | 10  | 115 160 |
| 300                | 100           | 11            | 8   | 555 575 |

| Nominal Size<br>mm | PN 35<br>(aD) | PN 35<br>(ad) | (h) | (L)     |
|--------------------|---------------|---------------|-----|---------|
| (DN)               | (dn)          | mm            | mm  | mm      |
| 300                | 150           | 11            | 9   | 425 460 |
| 300                | 200           | 11            | 10  | 300 345 |
| 300                | 225           | 11            | 10  | 240 290 |
| 300                | 250           | 11            | 10  | 180 225 |
| 375                | 200           | 12            | 10  | 495 540 |
| 375                | 225           | 12            | 10  | 435 485 |
| 375                | 250           | 12            | 10  | 375 420 |
| 375                | 300           | 12            | 11  | 245 305 |
| 450                | 250           | 13            | 10  | 565 610 |
| 450                | 300           | 13            | 11  | 435 495 |
| 450                | 375           | 13            | 12  | 250 310 |
| 500                | 250           | 14            | 10  | 690 740 |
| 500                | 300           | 14            | 11  | 565 620 |

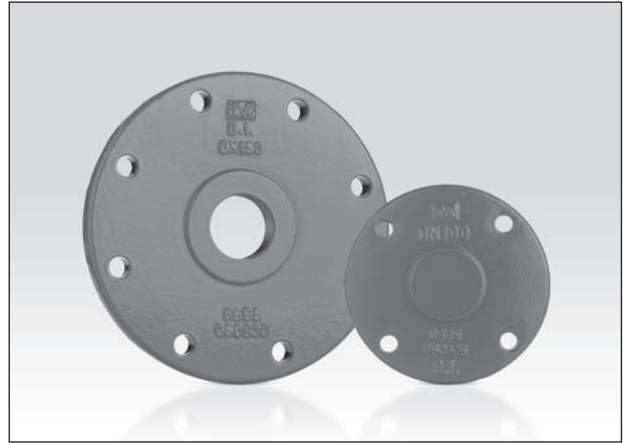
| Nominal Size<br>mm | PN 35<br>(aD) | PN 35<br>(ad) | (h) | (L)       |
|--------------------|---------------|---------------|-----|-----------|
| (DN)               | (dn)          | mm            | mm  | mm        |
| 500                | 375           | 14            | 12  | 380 440   |
| 500                | 400           | 14            | 13  | 190 255   |
| 600                | 300           | 15            | 11  | 820 875   |
| 600                | 375           | 15            | 12  | 635 690   |
| 600                | 450           | 15            | 13  | 440 510   |
| 600                | 500           | 15            | 14  | 315 400   |
| 600                | 525           | 15            | 14  | - 340     |
| 750                | 375           | 18            | 12  | 1020 1080 |
| 750                | 450           | 18            | 13  | 830 895   |
| 750                | 500           | 18            | 14  | 700 785   |
| 750                | 525           | 18            | 14  | - 725     |
| 750                | 600           | 18            | 15  | 445 540   |
| 750                | 675           | 18            | 16  | - 330     |

### Notes

1. Minimum wall thickness for other pressure classifications shall comply with AS/NZS 2280:2004 – Clauses 1.6.3.
2. For details of flanges, see AS 4087.



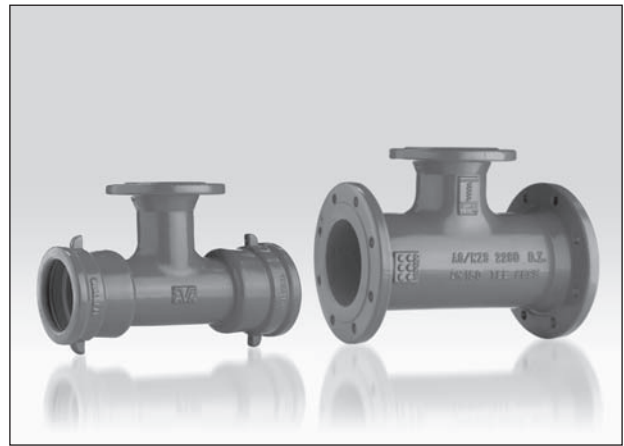
Hydrant Risers



Blank Flanges



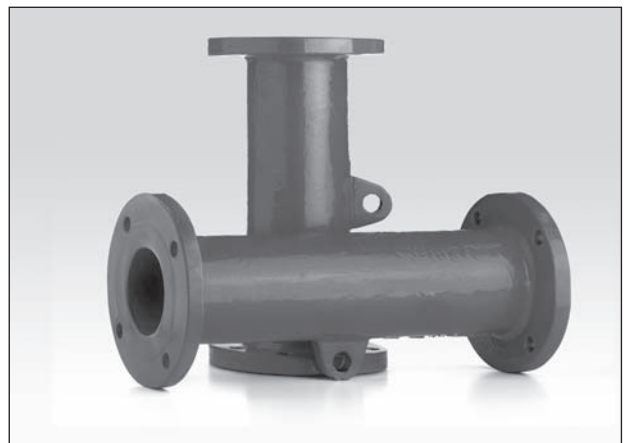
Flange Adaptors



Tees and Hydrant Tees



Standard Bends



Lengthening Pieces

Buyers and users of the products described in this brochure must make their own assessment of the suitability and appropriateness of the products for their particular use and the conditions in which they will be used. All queries regarding product suitability, purpose or installation should be directed to the nearest Humes Sales Centre for service and assistance. © Fletcher Concrete and Infrastructure Limited 2007. Printed 05/07.

