

Universal step coupling up to PN 16
For cast iron, ductile iron, steel, PVC-U, PVC-M, PVC-O, AC and copper pipes

Use:

For water and sewage applications to max. 40°C
 Angular deflection of ±4 degrees (total 8 degrees)
 16 bar / 160 metres allowable operating pressure (AOP)
 Non tensile
 This product provides no longitudinal joint restraint

Approvals:

All materials are AS/NZS 4020 compliant

Materials:

Gland rings, stepped barrel	Ductile iron, AS 1831 Gr. 400-12 min.
Coating	Fusion bonded epoxy to AS/NZS 4158
Rubber seals	Water: EPDM to AS/NZS 1646, AS/NZS 4020 compliant
Nuts	SS 316, PTFE coated
Washers	SS 316
Bolts	SS 316



AVK Australia's website contains the latest product information and data sheets.

Designs, materials and specifications shown are subject to change without notice due to our continuing program of product development.



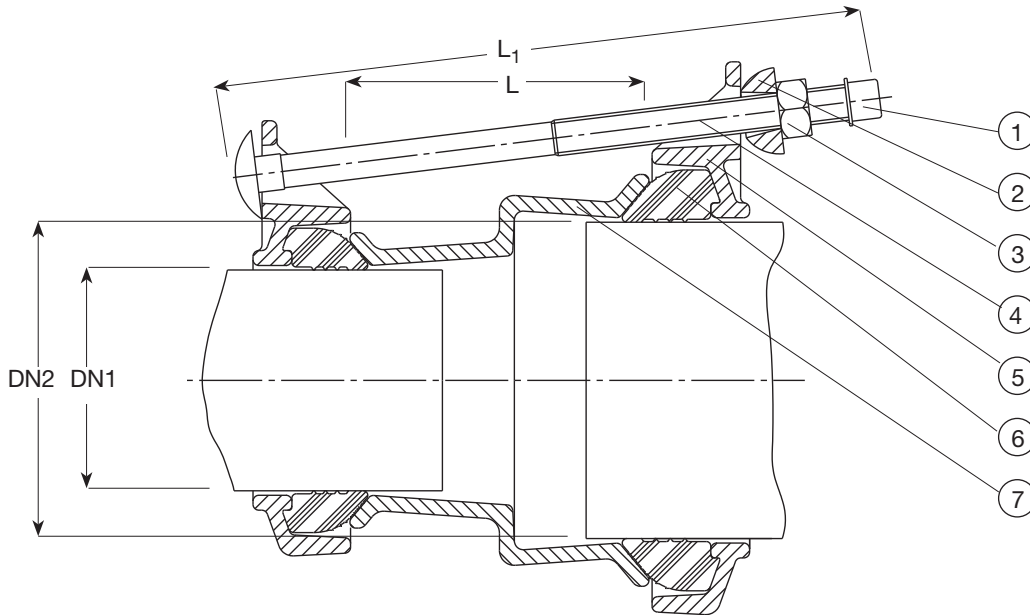
AVK Australia Pty Ltd
 559A Grand Junction Road, Wingfield, SA 5013 Australia
 Tel: +61 8 8368 0900
 Fax: +61 8 8368 0970
 E-mail: info@avkvalves.com.au
 www.avkvalves.com.au
 Copyright© AVK Group A/S 2010

3N602XJQ
 April 2010

Universal step coupling up to PN 16
 For cast iron, ductile iron, steel, PVC-U, PVC-M, PVC-O, AC and copper pipes

Component list

- | | | |
|------------|----------------|-------------------|
| 1. End cap | 4. Bolt | 7. Stepped barrel |
| 2. Washer | 5. Gland ring | |
| 3. Nut | 6. Rubber seal | |



Ref. nos.	Pipe DN1	Pipe DN2	Sealing range mm		L mm	L1 mm	Bolts	Weight kilos
			DN1	DN2				
602-063074-4-312	40 - 50	46 - 63	57 - 74		100	190	2	3.2
602-063085-4-312	40 - 65	46 - 63	68 - 85		100	190	4	4.2
602-074085-4-312	50 - 65	57 - 74	68 - 85		100	210	4	4.2
602-074106-4-312	50 - 80	57 - 74	84 - 106		100	210	4	4.5
602-085106-4-312	65 - 80	68 - 85	84 - 106		100	210	4	4.9
602-106119-4-312	80 - 100	84 - 106	99 - 119		100	210	4	5.3
602-106133-4-312	80 - 100	84 - 106	109 - 133		100	210	4	5.3
602-119133-4-312	100 - 100	99 - 119	109 - 133		100	210	4	5.6
602-119157-4-312	100 - 125	99 - 119	132 - 157		100	210	4	6.4
602-133157-4-312	100 - 125	109 - 133	132 - 157		100	210	4	6.4
602-133183-4-312	100 - 150	109 - 133	157 - 183		115	230	4	7.4
602-157183-4-312	125 - 150	132 - 157	157 - 183		115	230	4	7.7
602-183201-4-312	150 - 150	157 - 183	176 - 201		115	230	4	8.9
602-201215-4-312	150 - 200	176 - 201	193 - 215		115	230	4	9.6
602-201242-4-312	150 - 200	176 - 201	218 - 242		140	250	4	11.2
602-215242-4-312	200 - 200	193 - 215	218 - 242		140	250	4	11.0
602-215268-4-312	200 - 225	193 - 215	242 - 268		140	250	6	13.0
602-242268-4-312	200 - 225	218 - 242	242 - 268		140	250	6	13.5
602-268292-4-312	225 - 250	242 - 268	266 - 292		160	270	6	14.5
602-292306-4-312	250 - 250	266 - 292	280 - 306		160	270	6	15.8
602-292327-4-312	250 - 300	266 - 292	301 - 327		160	270	6	16.3
602-327350-4-312	300 - 300	301 - 327	324 - 350		160	270	6	17.3
602-327378-4-312	300 - 350	301 - 327	352 - 378		160	270	8	19.4
602-350378-4-312	300 - 350	324 - 350	352 - 378		160	270	8	20.3
602-378396-4-312	350 - 350	352 - 378	372 - 396		160	270	8	20.7
602-396410-4-312	350 - 350	372 - 396	384 - 410		160	270	8	21.1
602-410436-4-312	350 - 400	384 - 410	410 - 436		160	270	8	21.9
602-436462-4-312	400 - 400	410 - 436	436 - 462		160	270	8	22.7