

# Flange adaptors



This comprehensive range of fittings are designed to meet the requirements of the joint AS/NZS 2280 standard. This standard ensures that all pipe fittings have consistent dimensions and manufacturing tolerances, and are fully interchangeable with other AS/NZS 2280 fittings.

## End features

### Flanged Ends

Flanged ductile iron flange adaptors are drilled to standard AS 4087 or with special drillings as required.

### Dualseal™

Dualseal™ is a range of socketed rubber ring joint end connections, for ductile iron fittings. The interchangeable dual rubber seal allow the same fitting to be used for pipes with a common nominal bore with varying outside diameters, such as series 1 and series 2 PVC pipes, ductile iron and steel pipe.

## Features

- Complies to AS/NZS 2280 Standard
- High strength, light weight ductile iron construction
- DualSeal™ socket ends or spigot ends to AS/NZS 2280
- Compatible with all current pipe types
- Standard spigot ends to AS/NZS 2280





## Description

Ductile iron flange adaptor

## Use

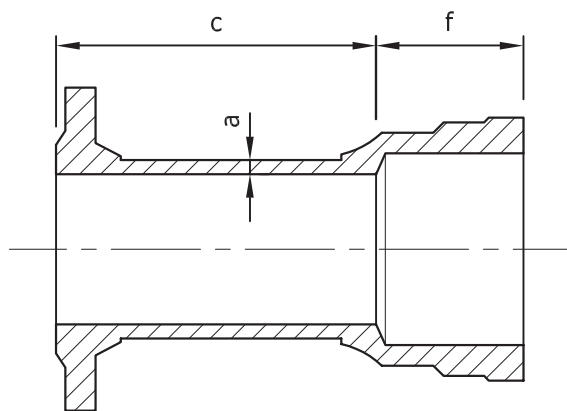
For use with potable & non-potable water or waste

## Manufacturing Standard

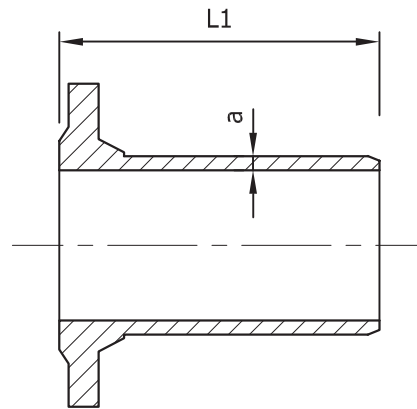
Manufactured to AS/NZS 2280

## Coating

Coated to AS/NZS 4158



Flange Socket



Flange Spigot

## Dimensions

Nominal size (DN)	PN 35 (a) mm	(c) mm	(L1) mm
100	8	110	205
150	9	135	205
200	10	135	230
225	10	155	230
250	10	155	230
300	11	170	255
375	12	190	280
450	13	200	280
500	14	215	305
525	14	-	305
600	15	230	330
675	16	-	350
750	18	250	370

## Notes

1. Minimum wall thickness for other pressure classifications shall comply with AS/NZS 2280
2. For details of spigots, see Lengthening Pieces brochure.
3. For details of flanges, see AS 4087.
4. For details of dimension f and socket profile, refer to manufacturer.

Buyers and users of the products described in this brochure must make their own assessment of the suitability and appropriateness of the products for their particular use and the conditions in which they will be used. All queries regarding product suitability, purpose or installation should be directed to the nearest Humes Sales Centre for service and assistance. © Fletcher Concrete and Infrastructure Limited 2007. Printed 05/07.

