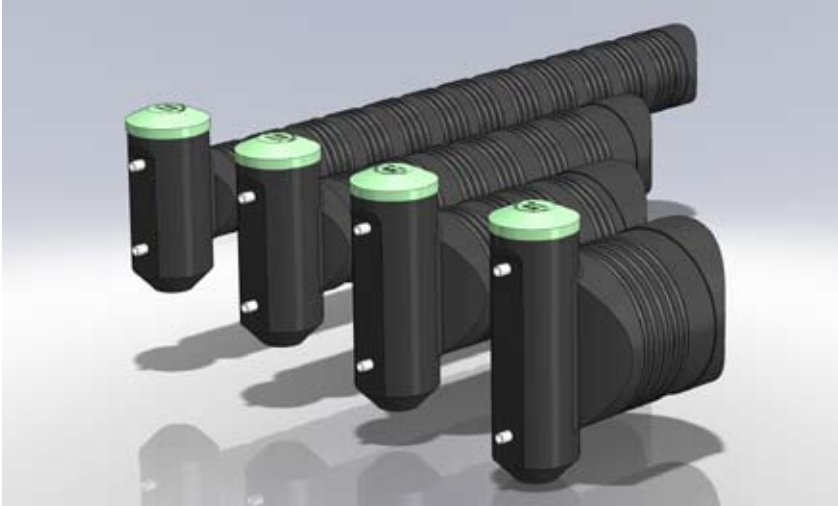


Stormlite

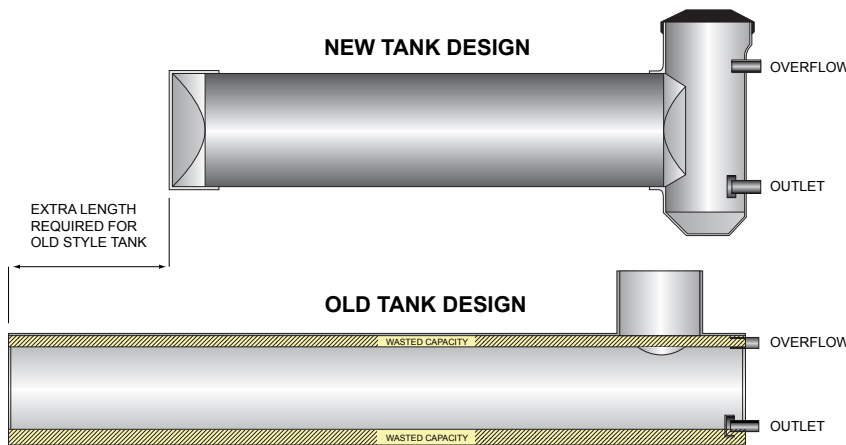


Retention/Detention rainwater tanks
designed with you in mind



Stormlite tanks, available throughout New Zealand, are suitable for stormwater detention and retention, rain harvesting and water recycling.

A tank that suits your needs. Every site catered for by four diameter options. You choose long and skinny or short and fat.



No need to install a separate silt trap, as this is part of the tank.

Meet consent requirements with the smallest possible tank and excavation. Our unique hammerhead design makes use of all the tank.

Save time and money.
Delivered onsite in one piece complete with connection fittings.

Every tank made to order.
Each one no larger than it needs to be.

No heavy lifting equipment required, light enough for your excavator to handle.

