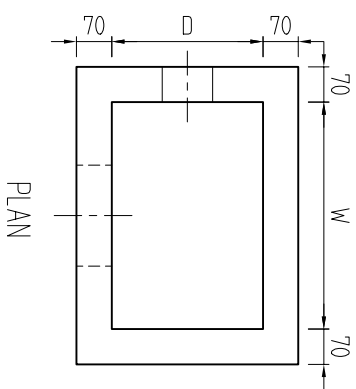
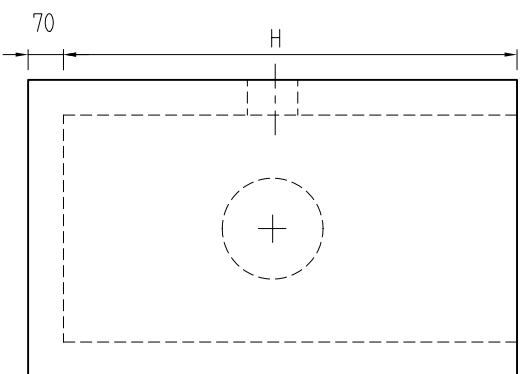


3D VIEW



PLAN



ELEVATION

SPECIFICATIONS :

1. MANUFACTURE IN ACCORDANCE WITH NZS 3109:1997 (PRECAST UNITS)
2. SURFACE FINISHES TO NZS 3114:1987
Formed Surfaces - F₄
Trowelled Surfaces - U2
3. CONCRETE STRENGTH : a. f'_c = 35 MPa (min)
b. Stripping Strength (min) = 10 MPa

CESS PIT SIZES	H	W	D	CONCRETE QUANTITY	TOTAL MASS WEIGHT
300 X 300 X 600	630	300	300	0.71 HL	172 KG
300 X 450 X 600	630	450	300	1.02 HL	245 KG
300 X 450 X 900	900	450	300	1.43 HL	344 KG
450 X 450 X 900	900	450	450	1.67 HL	404 KG
450 X 450 X 1200	1200	450	450	2.35 HL	568 KG
675 X 450 X 1200	1200	675	450	2.57 HL	621 KG
675 X 450 X 1650	1650	675	450	3.74 HL	900 KG



Humes Pipeline Systems
Private Bag 92817
Auckland
Freephone 0800 502 112
www.humes.co.nz

Copyright: This design, information and drawing remain the property of Humes Pipeline Systems and may not be used or copied without approval in writing from Humes Pipeline Systems.

STORM WATER COLLECTION PRODUCTS
FLAT TOP CESS PIT

Drawn By SAVINDER Date 09-02-04

Checked By Scale A4 NTS

Reference No.

Drawing No

Rev. No

0