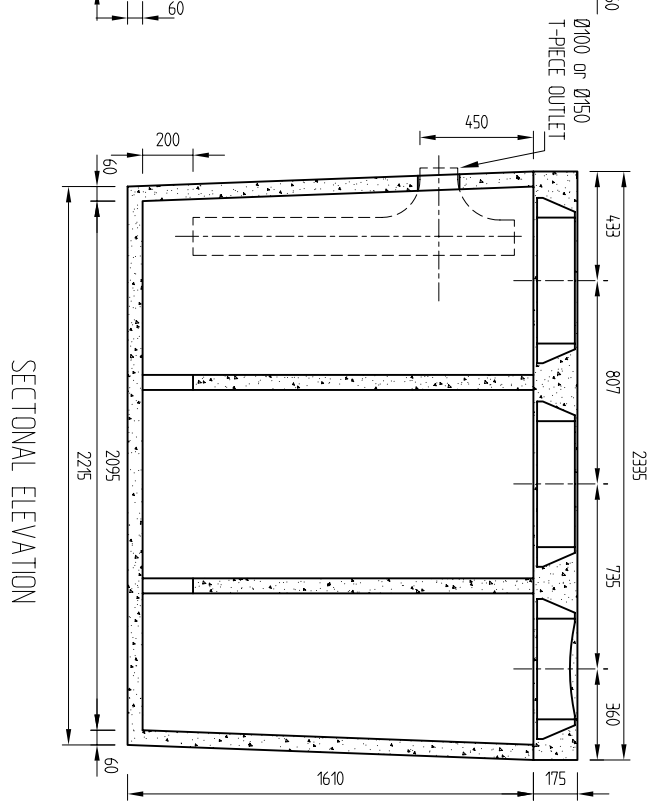
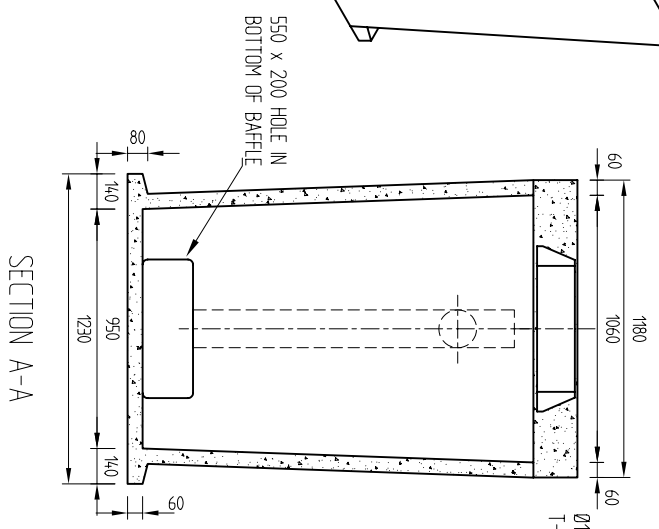
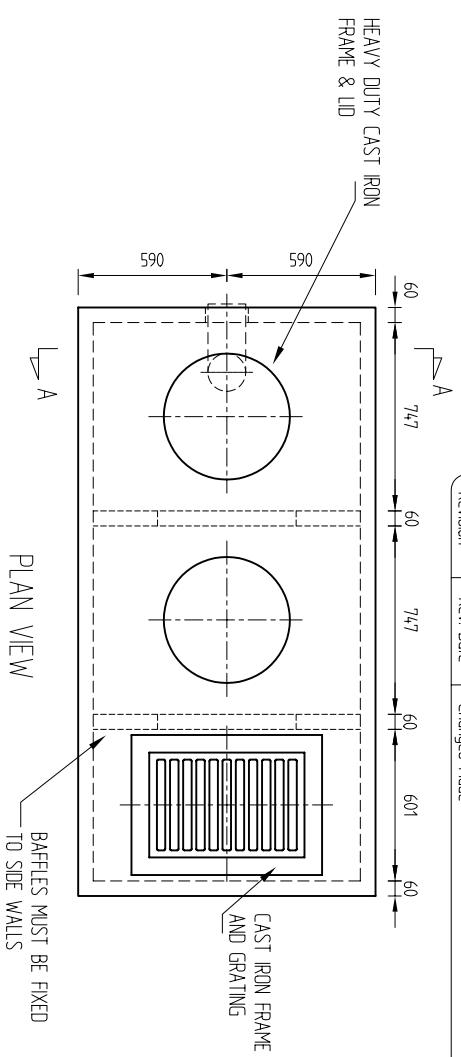


- NOTES:**
1. CONCRETE QUANTITY: BODY 9.8 HL - LID 3.3HL
 2. SWIFTLIFTS: 4-13 TONNE x 66 FOOT ANCHORS (LID)
 3. TOTAL MASS WEIGHT: 3453kg (inc. CAST IRON)
 4. CONCRETE BASED ON 240kg per HL

SPECIFICATIONS:

1. MANUFACTURE IN ACCORDANCE WITH NZS 3109:1997 (PRECAST UNITS).
2. SURFACE FINISHES TO NZS 3114:1987
Formed Surfaces - F4
Trowelled Surfaces - U2
Concrete Strength : a. f'c = 40MPa
b. Stripping Strength (min) = 15MPa
4. DESIGN LOAD IS 0.85 HN



Revision	Rev. Date	Changes Made



Humes Pipeline Systems
 Private Bag 92817
 Auckland
 Freephone 0800 502 112
 www.humes.co.nz

Copyright: This design, information and drawing remain the property of Humes Pipeline Systems and may not be used or copied without approval in writing from Humes Pipeline Systems.

2000 LITRE OIL & GRIT INTERCEPTOR
 PRIMARY OIL INTERCEPTOR

Drawn By Savinder	Date 08/03/2004
Checked By	Scale A4 Do Not Scale
Reference No.	
Drawing No. WEB VERSION	Rev. No. 0