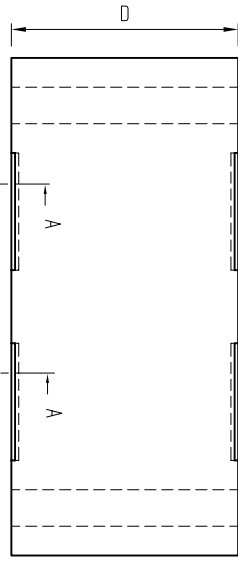
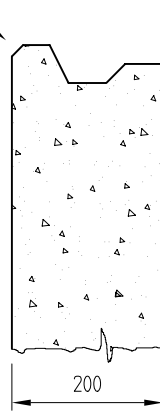


3D VIEW

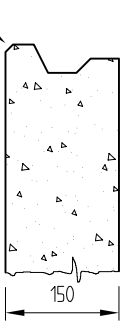


PLAN



SECTION A-A (200 Deck)

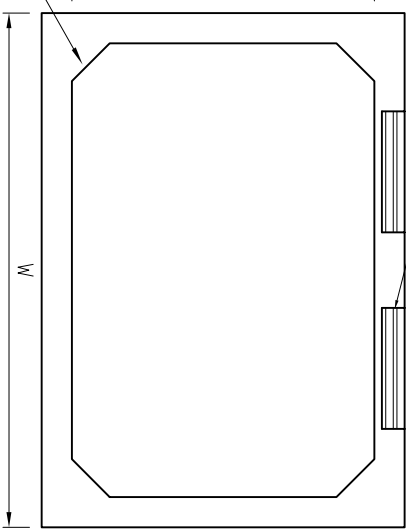
Corner chamfer to facilitate sealing as required



SECTION A-A' (150 Deck)

Corner chamfer to facilitate sealing as required

THESE CORNERS CAN BE CHAMFERED OR FILETED AT 250mm ACCORDING TO REGIONAL MOLD CONFIGURATION



ELEVATION

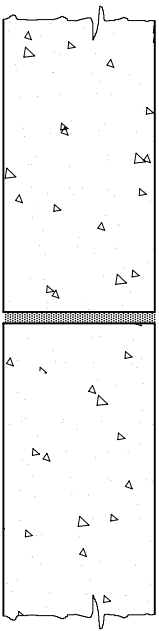
STANDARD/NON STANDARD BOX SIZES

EACH BOX CULVERT UNIT IS 1550mm LONG	SPAN 'w' (mm) STANDARD					SPAN 'w' (mm) NON STANDARD			
	1500	2000	2500	3000	3500	4500	5000	5500	6000
HEIGHT 'H' (mm) 1500	X	X	X	X	X	•	•	•	•
2000	X	X	X	X	X	•	•	•	•
2500	X	X	X	X	X	•	•	•	•
3000	X	X	X	X	X	•	•	•	•
3500	X	X	X	X	X	•	•	•	•
4000	X	X	X	X	X	•	•	•	•

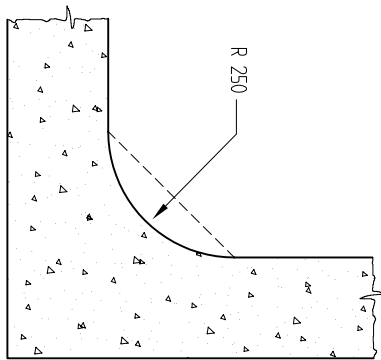
SPECIAL SIZES ARE AVAILABLE ON REQUEST

SPECIFICATIONS

1. MANUFACTURE IN ACCORDANCE WITH NZS 3109:1997 (PRECAST UNITS)
2. SURFACE FINISHES TO NZS 3114:1987  
Formed Surfaces - F4  
Trowelled Surfaces - U2
3. CONCRETE STRENGTH : a. f'c = 40MPa (min)  
b. Stripping Strength (min) = 15MPa
4. STEEL GRADE: 500

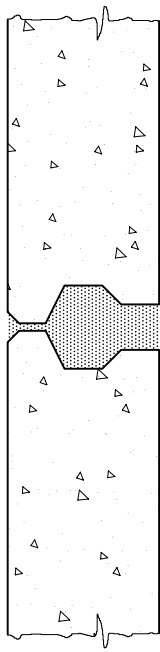


BUTT JOINT



TYPICAL CORNER DETAIL

NOTE: SHEAR KEYS REQUIRED FOR LESS THAN 600mm COVER



SHEAR KEY JOINT



**Humes Pipeline Systems**  
Private Bag 92817  
Auckland  
Freephone 0800 502 112  
www.humes.co.nz

Copyright: This design, information and drawing remain the property of Humes Pipeline Systems and may not be used or copied without approval in writing from Humes Pipeline Systems.

CONCRETE BOX CULVERT SYSTEM  
TYPICAL DETAILS

Drawn By	Savinder	Date	16-01-04
Checked By		Scale A4	Do Not Scale
Reference No.			
Drawing No.		Rev. No.	0