



PO Box 12146
Penrose
Auckland
1642
Ph 0800 SHORENZ
Email: enquiries@shorenz.co.nz
Web www.shorenz.co.nz

TRENCH SHORING NZ LTD CAPABILITIES

May 2010

TRENCH SHORING NEW ZEALAND Ltd (TSNZ)

TSNZ is a company specializing in the hire and sale of purpose designed and built shoring equipment. TSNZ has a license from Krings International France (KIF) to distribute and hire its equipment throughout New Zealand, Australia and the Pacific Islands.

TSNZ is located in Auckland, at 306 Neilson Street, Onehunga. Approximately half of its shoring equipment is based at this location to service the Northern Region. The rest is based in Wellington and Christchurch. TSNZ hires and sells equipment through Humes Pipeline Systems and Hynds Pipe Systems.

Visit www.shorenz.co.nz for information about shoring regulations, systems supplied by TSNZ and other valuable information.

KRINGS INTERNATIONAL FRANCE (KIF)

KIF has been in the business of specialised trench shoring systems since 1981. The range of equipment offered by KIF can be seen on www.krings.com 70% of the equipment owned for hire by KIF is for larger projects and comprises the single and double slide rail systems. This range enables safe and efficient trenching from 1.5m to 8m deep and widths of up to 12m. KIF provide support to customers in design of shoring systems and site support and training.

TSNZ SHORING EQUIPMENT AVAILABLE IN NEW ZEALAND

TSNZ has 77 assemblies of KS100 trench boxes available for hire throughout New Zealand.

TSNZ also has KS100 units available for sale ex-stock in New Zealand.

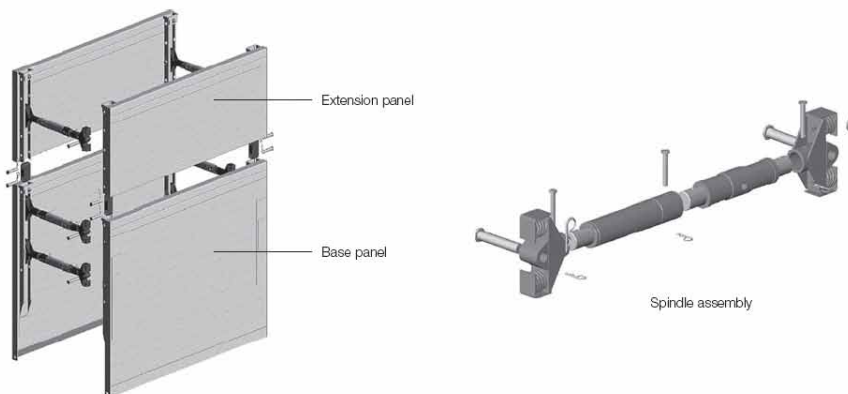
Additionally, TSNZ has DGVP Double Slide Rail, EGVP Single Slide Rail, KKP Sheet Pile Frames and piles as well as several ECK500 Manhole Boxes.

KS100 Trench Box

The KS100 system is a versatile system designed to meet the majority of trenching support requirements up to 3.5m deep and from 1m to 3.3m wide. The KS100 can, in some situations be used to depths of 4.8m. Units are 4m long or 2.5m long with 1.4m clearance under the bottom struts. Maximum loadings range from 32kN/m² to 65kN/m².



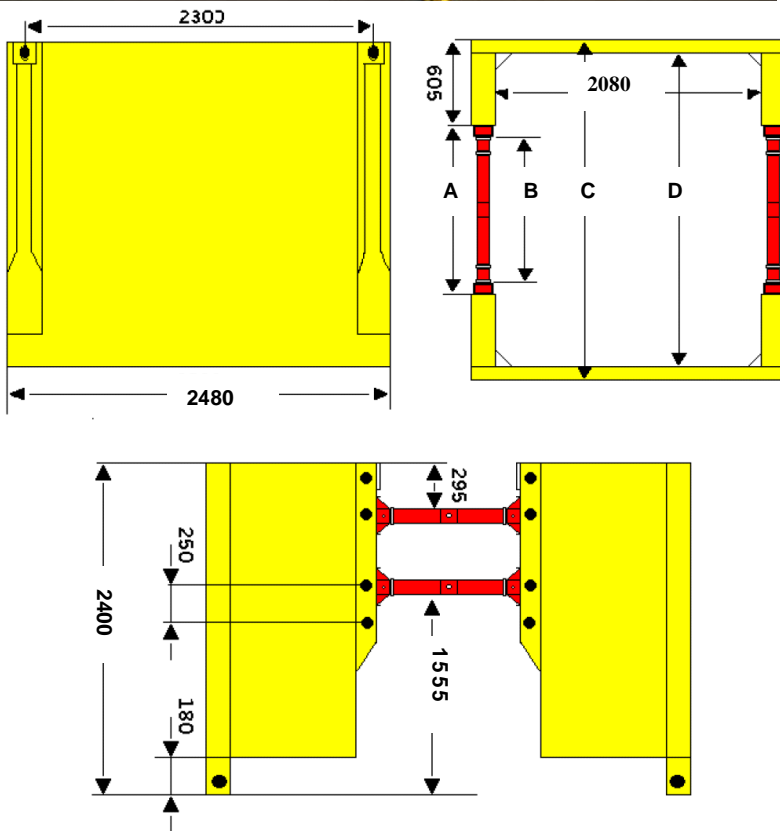
KS100



| Base Plate LxH (mm) | Box Weight (kg) | Pipe Culvert Clearance (mm) | Maximum Load (kN/m ²) |
|------------------------|-----------------|-----------------------------|-----------------------------------|
| KS 2500x2200 | 1662 | 1400 | 65 |
| KS 4000x2200 | 2152 | 1400 | 32 |
| Extension Plate | | | |
| KS 2500x1300 | 1045 | - | 61 |
| KS 4000x1300 | 1285 | - | 33 |

Note: These weights are at the minimum width configuration of 1m.

ECK500 Manhole Boxes



| Designation | Dimensions (length x depth) (mm) | Distance Between Spindles (mm) | Distance Between L Shaper (mm) | Space under Spindle (mm) | Admissable Load kN/m ² | Weight per Box kg |
|---------------|----------------------------------|--------------------------------|--------------------------------|--------------------------|-----------------------------------|-------------------|
| Base Box | 2500 x 2400 | 2170 | 2080 | 1555 | 65.20 | 1934 |
| Extension Box | 2500 x 1400 | 2170 | 2080 | - | 65.20 | 1264 |

MANHOLE BOX WIDTH DIMENSIONS (m)

| Designation | Dimensions (length x depth) (mm) | Distance Between Spindles (mm) | Distance Between L Shaper (mm) | Space under Spindle (mm) | Admissable Load kN/m ² | Weight per Box kg |
|-------------|----------------------------------|--------------------------------|--------------------------------|--------------------------|-----------------------------------|-------------------|
| A | Spindle length | 1.0 – 1.3 | 1.5 – 1.8 | 2.0 – 2.3 | | |
| B | Spindle less mushrooms (A - 0.3) | 0.7 – 1.0 | 1.2 – 1.5 | 1.7 – 2.0 | | |
| C | Outside panel width (A + 1.2) | 2.2 – 2.5 | 2.7 – 3.0 | 3.2 – 3.5 | | |
| D | Inside panel width (C - 0.2) | 2.0 – 2.3 | 2.5 – 2.8 | 3.0 – 3.3 | | |

DGVP Double Slide Rail

This system is specialised and designed for larger, deeper excavations. TSNZ has 7 x 4m long modules providing up to 30.5m of continuous shoring, or 2 x 13.3m of shoring. The DGVP has a depth capability of up to 6m and a range of widths up to 12m. Also in stock are corner slide rails so that TSNZ can offer a range of shoring for pits from 4m x 4m to 8m x 8m.



L = 6.1m

Panel length = 4m or 3m

Panel heights

Base - 2.4m

Extension - 1.3m

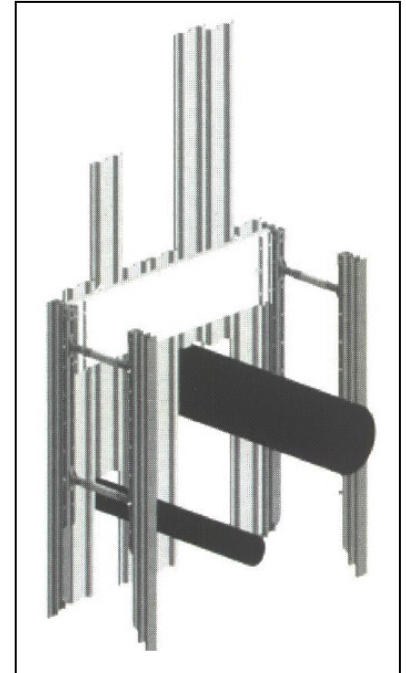
Max soil pressure 37.45 kN/m²
for 4m panels and 56kN/m² for
3m panels.

Widths from 1m to 5.5m
currently available ex stock.



KKP Sheet Piling Frame and Sheet Piles

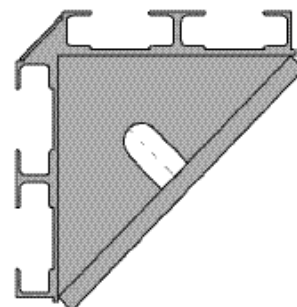
TSNZ has KIF Sheet Pile frames (KKP) 4m long used with 8mm sheet piles to 6m deep. This purpose designed equipment is designed to be used in conjunction with either the slide rail system or the KS100 and will enable safe shoring around services crossing the trench.



DGECK Double Corner Slide Rail System

TSNZ has KIF Double Corner Slide Rails which are purpose built to provide 4 sided pit configurations to 5.5m depth. Extensions will soon be available to enable depths to 7.5m. This system is designed to be used in conjunction with standard KR double slide rail 4m or 3m long panels. Base panels are 2.4m deep and extension panels are 1.3m deep. Additionally, the KKP Sheet Pile Frame and piles can be used with the corner slide rails.

5.5m deep square pits 4m x 4m each side are easily installed. Also, by utilising the DGVP standard double slide rails as intermediate frames, 5.5m deep pits of 8m x 4m or 8m x 8m can be configured. These require either the standard DGVP sliding frame to provide transverse strength at the intermediate rails or whalers placed along the outside of the pit and fixed to the rails.



EGVP Single Slide Rail

For larger diameter pipelines, box culverts etc where extra clearance is required. The EGVP is designed to go to 4m deep using either 4m or 3m long KR panels. These panels are interchangeable with the double slide rail system. Base panels are 2.4m deep and extension panels are 1.3m deep. As with the double slide rail system the transverse frame assembly slides up and down to give clearances underneath of up to 3m.



Support

TSNZ will provide support to customers for the following:

1. Shoring design and advice
2. Training in the safe and efficient use of the systems
3. Site support from TSNZ personnel

Contact us:

0800 SHORENZ (0800 746 7369) for more information about shoring or email:
enquiries@shorenz.co.nz