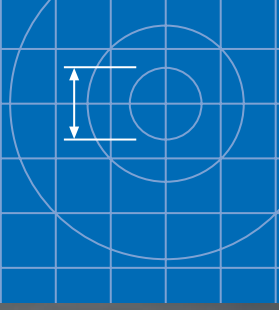


Oil and Grit Interceptor protecting our streams



For separation of oil and grit from stormwater and wash down areas

Humes concrete Oil and Grit Interceptor devices are applicable for stormwater runoff from areas where hydrocarbon products are present or where small spills routinely fall on paved surfaces exposed to rain.

The primary objective of Oil and Grit Interceptors is to treat most of the flow from the catchment and to remove free floating oil. Oil and Grit Interceptors are also designed to collect coarse sediment. However, to treat total suspended solids effectively in stormwater runoff, other devices such as sand filters should be used.

Oil and Grit Interceptors are not usually applicable for general urban runoff, because by the time oil reaches the device it is emulsified or coats sediment in the runoff and is difficult to separate.

Treatment should be as close to the source of the hydrocarbon products as possible to retain the oil in a floatable, non-emulsified form.

Oil and Grit Interceptors should not be used for large spill containment. A Humes API Interceptor is a suitable solution for capturing an accidental spill of 2500 litres and above.

Features

- Multi chambered separation for oil and sediment
- Design load 0.85HN
- Swift lift anchors cast into product
- Product can be customised to suit application

Optional Features

- T junction fittings
- Non-rock cast iron lid and frame
- Cast iron frame and grate
- No gap between bottom of baffle and base of unit

Benefits

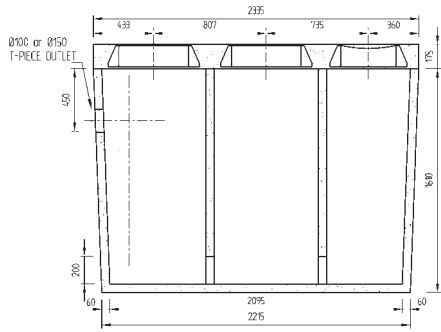
- Customised product to suit specific applications
- Efficient separation of contaminants
- Use in traffic areas
- Easy handling

Applications

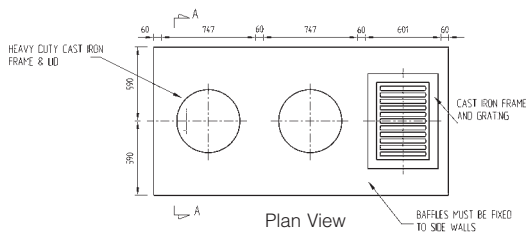
- Wash down areas
- Carparks
- Terminals and Depots



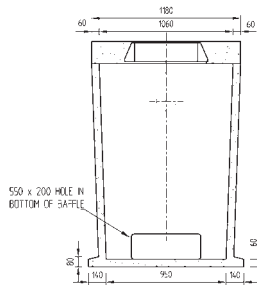
Oil and Grit Interceptor protecting our streams



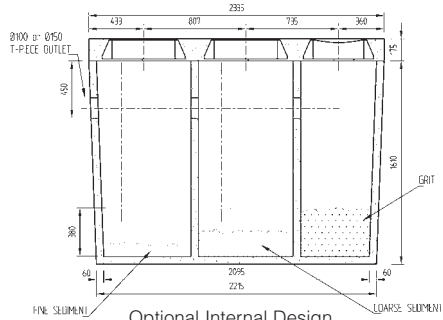
Sectional Elevation
Primary Oil Interceptor



Plan View



Cross Sectional View



Optional Internal Design
Primary Grit Interceptor

Note: Other design options available.

Standard model sizes and dimensions

| Item number | Oil Catchment Capacity (litres)- | Weight of unit | Nominal Length (mm) | Nominal Width (mm) | Nominal Height (mm) |
|-------------|----------------------------------|----------------|---------------------|--------------------|---------------------|
| 04655 | 2000 | 3275 | 2335 | 1180 | 1785 |
| 04759 | 1500 | 3275 | 2335 | 1180 | 1785 |

Humes can produce larger Oil and Grit Interceptor units upon request.

Installation

Humes Oil and Grit Interceptors are supplied complete, ready to be placed in the prepared excavation and connected to the drainage system.

Maintenance

As each application and its site runoff contamination is different, frequency of cleaning can only be determined once normal use has taken place. As a guideline, the Ministry for the Environment suggest that "oil and grit interceptors should be inspected monthly (or as appropriate, based on experience) and cleaned as required." Disposal of pollutants should be in accordance with Local Authority regulations.

Manufacturing Standards

Precast manufacture is to NZS 3109:1997 with surface finishes to NZS 3114:1987, F4 and U2 for formed and trowelled respectively.

For further details please contact your local Humes Sales Representative.



Disclaimer: Buyers and users of the products described in this brochure must make their own assessment of the suitability and appropriateness of the products for their particular use and the conditions in which they will be used. All queries regarding product suitability, purpose or installation should be directed to the nearest Humes Sales Centre for service and assistance. ©Fletcher Concrete and Infrastructure Limited 2004.

