

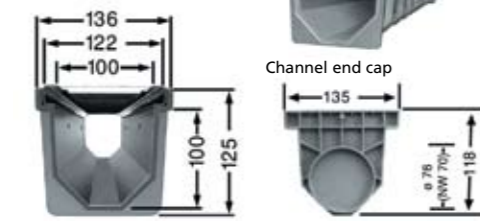
## MEARIN 100

### Grating Locking Mechanisms (1 piece every 500mm)

141105	100	CHANNEL
141350	100	ENDCAP
141400	100	INLINE SUMP
152211	100	LOCKING BAR & BOLT

#### Dimensions in mm:

Channel length 1000mm



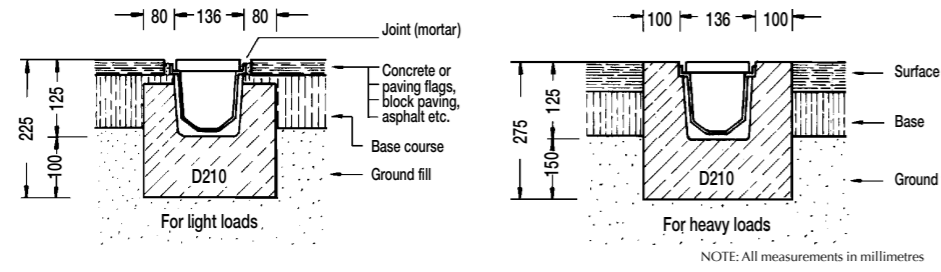
#### MEARIN silt box



Subject to constructional changes!  
NOTE: All measurements in millimetres

### Installation Examples for the Mearin 100

NOTE: The finished ground level should be about 5mm higher than the top edge of the grating.



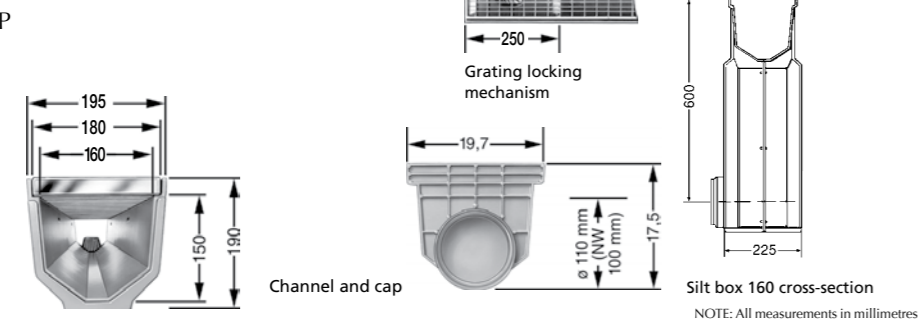
NOTE: All measurements in millimetres

## MEARIN 200

143905	200	CHANNEL
141351	200	ENDCAP
143005	200	INLINE SUMP
143820	200	LOCKING BAR & BOLT

#### Dimensions in mm:

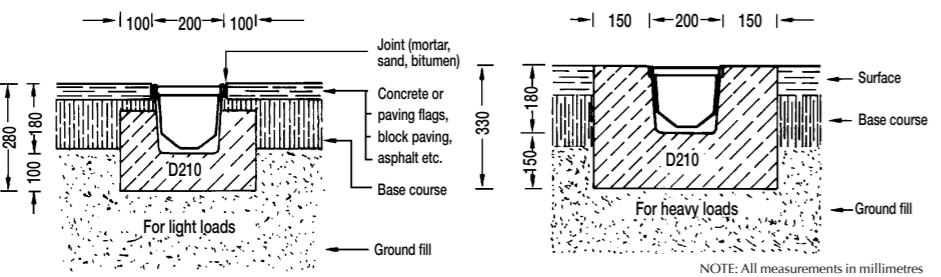
Channel length 1000mm



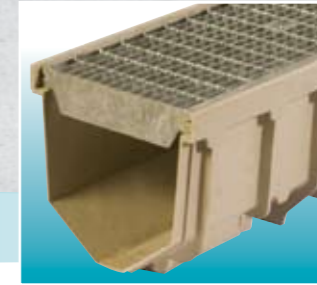
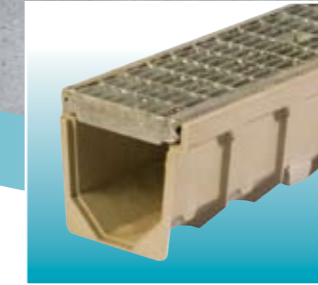
NOTE: All measurements in millimetres

### Installation Examples for the Mearin 200

The finished ground level should be about 5mm higher than the top edge of the grating.



NOTE: All measurements in millimetres



A PRODUCT FOR EVERY PROJECT  
MEARIN® ECONOMICAL DRAINAGE SOLUTIONS

For further information and technical assistance:



OFFICIAL SUPPLIER OF **MEA**

#### MELBOURNE

Phone. 1300 760 634  
21-23 Marshall Court  
Altona VIC 3018

#### QUEENSLAND

Phone. 1300 760 634  
Unit 3, 45 Canberra Street  
Hemmant QLD 4174

#### NEW ZEALAND

Phone. 0800 493 766

Email: [sales@hydrointernational.com.au](mailto:sales@hydrointernational.com.au)  
[www.hydrointernational.com.au](http://www.hydrointernational.com.au)

Disclaimer While every care has been taken to compile the information in this catalogue, Hydro International Pty Ltd accepts no responsibility for errors, omissions or losses arising from actions based on this information. Because the conditions of use are beyond the control of Hydro International Pty Ltd, all recommendations and suggestions on the use of Hydro International Pty Ltd products are made without guarantee. It is the customer's responsibility to ensure that each product is fit for its intended purpose and that the actual conditions are suitable. Hydro International Pty Ltd is constantly updating and improving its product range and reserves the right to amend specifications without notice. \*Please note weights shown in the catalogue are a guide only.

Hydro  
SERVICING  
Australia  
New Zealand

OFFICIAL SUPPLIER OF **MEA**

# MEARIN G.R.P. Drainage Channel 100 and 200 Overview

The right solution for every requirement  
 – Mearin 100 and 200 and high discharge capacity

**MEARIN®** Lightweight modular channel drainage systems

**MEARIN 100**

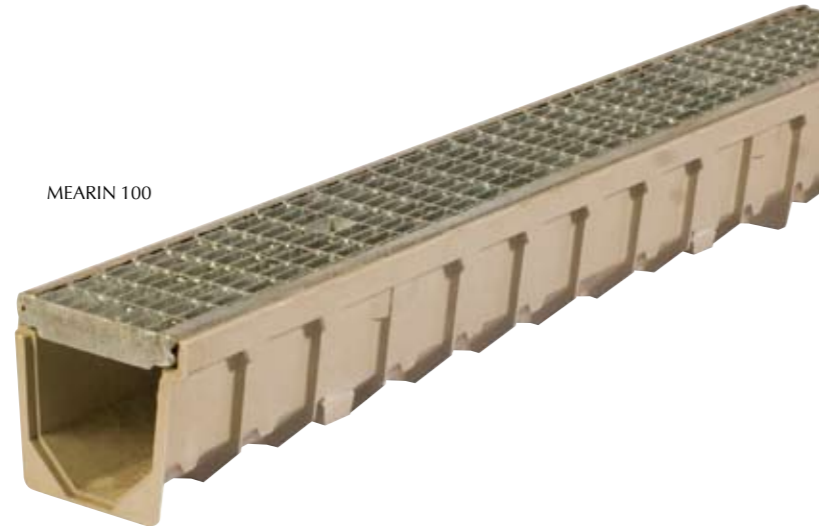
- Clear opening 100mm
- Overall width 136mm

**MEARIN 200**

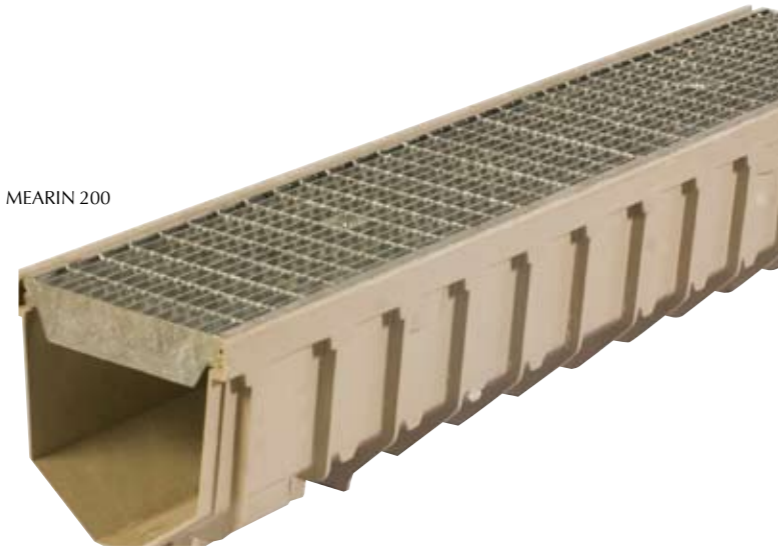
- Clear opening 160mm
- Overall width 196mm

**MEARIN 100 and MEARIN 200**

- Superb strength - Class C loading
- Light weight – fast and easy to install.
- Economical – lower installation costs.
- Hydraulically efficient – smooth concave surface.
- Versatile - Suitable for slow moving heavy vehicles.
- Variety of grate options  
 - Galvanised, Stainless Steel, Ductile Iron
- Self cleaning – very smooth base
- Chemical resistant  
 – against salts, oil, petrol and hot asphalt.
- Interstackable – easy to store and transport.
- Lockable – grates lock into channel.
- MEARIN 300 Available on request.



MEARIN 100



MEARIN 200



**LOAD CLASSES**



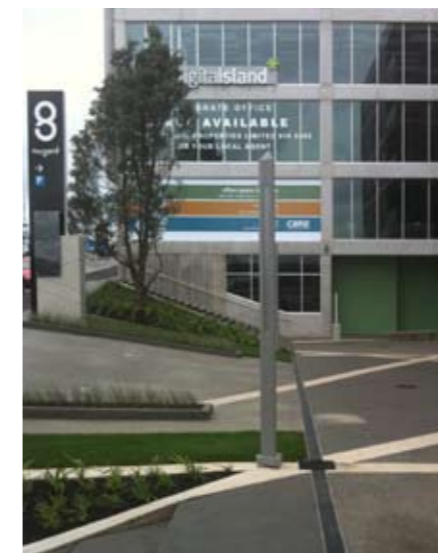
\* All grates must be locked down for (vehicular) traffic.

## Applications



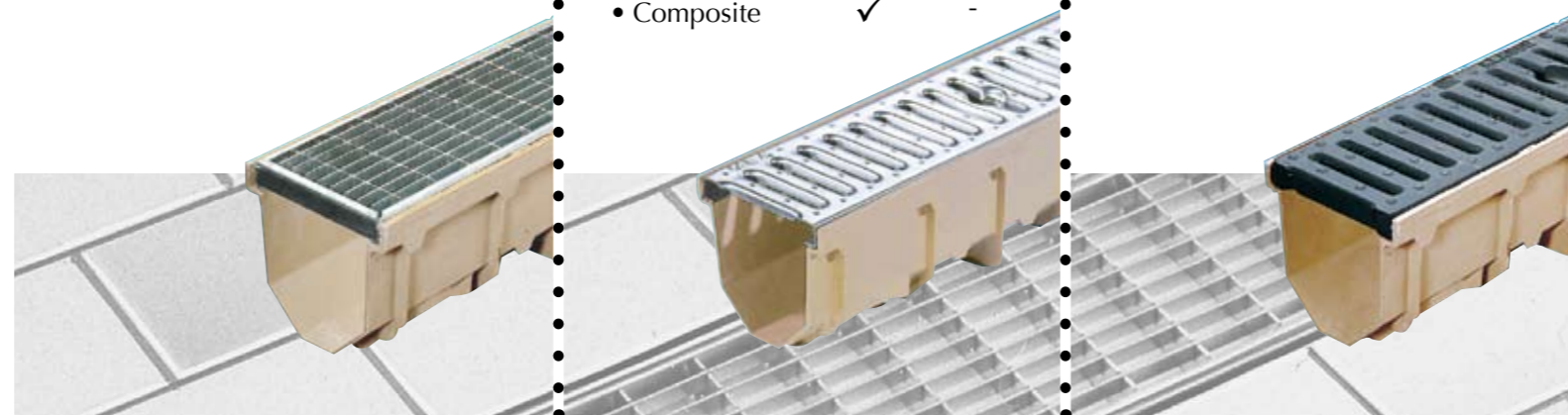
**TYPICAL APPLICATIONS**  
 Mearin is suitable for all types of surface water situations.

- Shopping Carparks
- Residential Driveways
- Around Swimming Pools
- Landscaping Applications
- Wineries
- Chemical Industries
- Patios
- Farmyards



### GRATE OPTIONS FOR MEARIN CHANNELS

GRATE TYPE	100	200	GRATE TYPE	100	200	GRATE TYPE	100	200
<b>MESH GRATE</b>			<b>SLOTTED GRATE</b>			<b>DUCTILE IRON</b>		
Loading Class A - C			Loading Class A - C			Loading Class A - C		
• Galvanised	✓	✓	• Galvanised	✓	-	• Heelguard	✓	✓
• Stainless Steel	✓	-	• Stainless Steel	✓	-	• Standard	✓	✓
			• Composite	✓	-			



## Installation



Trench excavation channel on side with string line visible.



Installation of outlet or sump.



Channel with grate across joint and concrete at joint.



Completed installation.

- 1 Excavate a trench refer detailed drawings for width and depth.
- 2 Run a string line at 3mm below finished ground level.
- 3 Lay out channel beside trench.
- 4 Install siltbox or connect PVC outlet first.
- 5 Using a firm concrete mix lay a base in bottom of trench.
- 6 Place channel onto concrete bed, start at the outlet end and work back.
- 7 Insert the grates over the joint to keep channel straight. (Install upside down until surrounding surfaces are finished.)
- 8 Back fill the channel with concrete to the level for the required surface finish.
- 9 Install the grates and optional locking mechanisms.

### HYDRAULIC CAPACITY OF MEARIN 100 AND MEARIN 200

