

# Ductile iron manhole cover & frames

## Lightweight and high strength



Humes Pipeline Systems distribute a range of ductile iron manhole cover and frames from Webforge NZ

All Webforge circular covers are cast from 500/7 ductile iron to meet the AS1831 standard giving greater strength and durability than other designs.

A unique feature of this range is the ability to raise the frame height once installed. A simple 'SnapRing' height adjustment can be added before the surrounding surface is raised, saving the time and work of digging out the frame and re-installing.

### Benefits

- Safer handling due to light weight
- Snap-lok pin and groove system – opens via lifting key only
- Reduction in the need to repair or replace worn concrete
- Easy height adjustment during installation

### Features

- Light weight
- 500/7 Ductile iron
- Gas and water tight
- Elimination of concrete infilling
- Non-skid pattern
- Self locking mechanism preventing unauthorised entry/cover removal
- Bolt down option available
- Longer durability due to high tensile strength (conforms to AS3996)

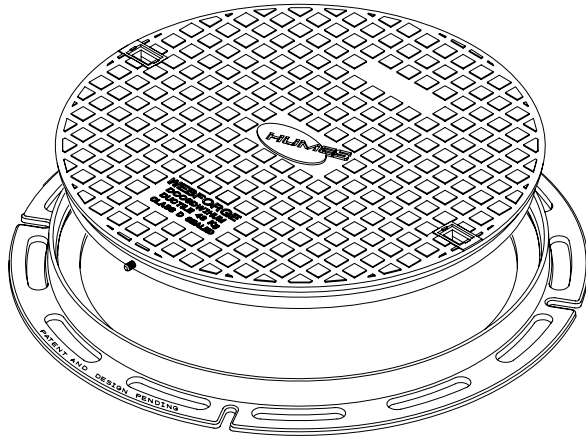


# Ductile iron manhole cover & frames

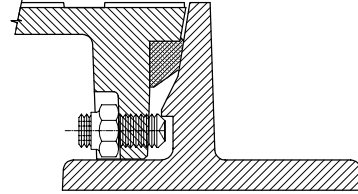
## Lightweight and high strength



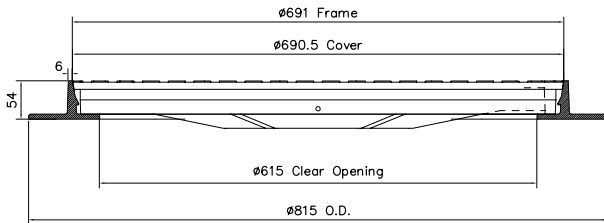
### Class 'D' assembly (59kg) with wide frame



#### OPTIONAL SNAPLOK BOLT & RUBBER SEAL



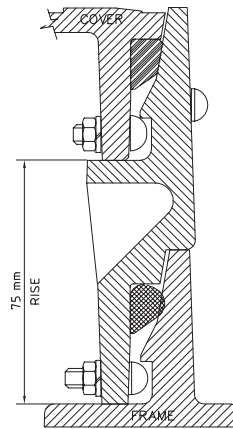
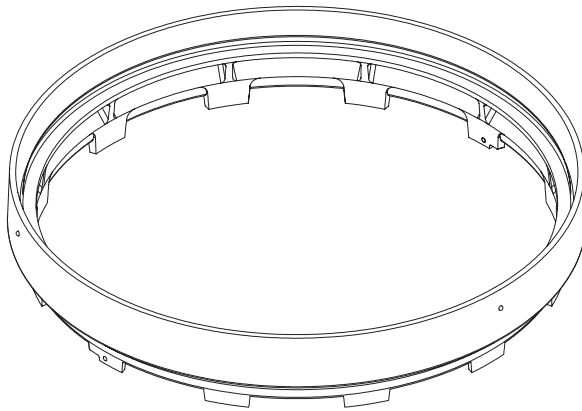
Product Code: DCC6DWISRHUM



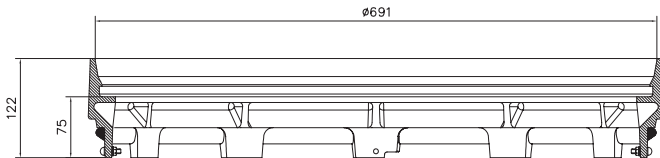
#### SnapRing Risers available:

- 50mm
- 75mm
- 100mm

### 75mm SnapRing



Assembly Including:  
1. Class D Frame  
2. Class D Cover



Item Number	Type	Rating	Cover (mm)		Frame (mm)		Weight of unit (kg)
			Ø	Ø	H	Clear Opening	
63056	510mm Clear Opening	Class D	586	585.5	54	510	45
63055	615mm Clear Opening	Class D	691	690.5	54	615	59

Buyers and users of the products described in this brochure must make their own assessment of the suitability and appropriateness of the products for their particular use and the conditions in which they will be used. All queries regarding product suitability, purpose or installation should be directed to the nearest Humes Sales Centre for service and assistance. © Fletcher Concrete and Infrastructure Limited 2007. Printed 09/07.

