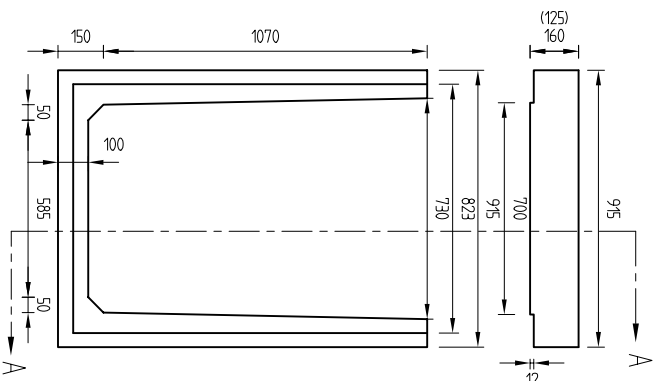
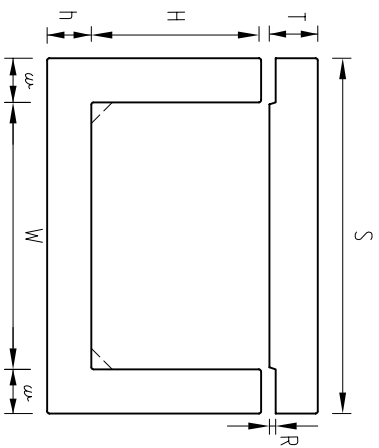
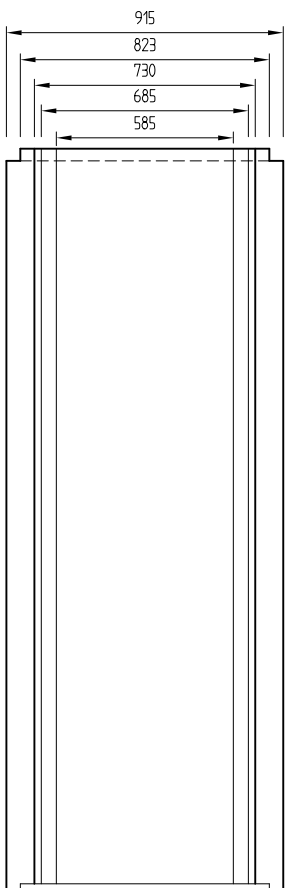


HEAVY DUTY (LIGHT DUTY)



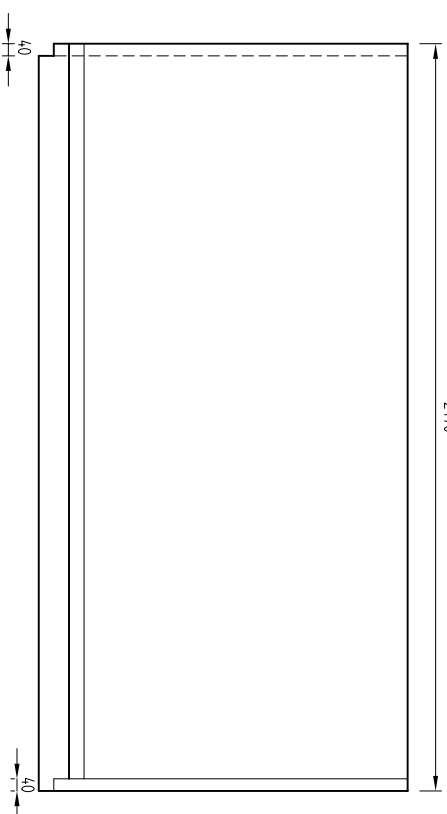
END ELEVATION



PLAN



LID ELEVATION



SIDE ELEVATION SEC 'A-A'

SERIES	700	L	ℓ	W	w	H	h	S	T
LIGHT DUTY	2440	810	810	685	100	750	100	915	125
HEAVY DUTY	2440	810	810	685	100	1070 (MAX)	100	915	125
HEAVY DUTY	2440	810	810	685	100	1070 (MAX)	100	915	160

NOTES :

- ℓ = MIN LID LENGTH
- L = DUCT LENGTH
- R = 12 UNLESS OTHERWISE STATED
- r_c = 35 Mpa FOR LIGHT DUTY AND HEAVY DUTY DUCTS
- r_c = 40 Mpa FOR HEAVY DUTY LIDS

SPECIFICATIONS :

1. MANUFACTURE IN ACCORDANCE WITH NZS 3109:1997 (PRECAST UNITS)
2. SURFACE FINISHES TO NZS 3114:1987
Formed Surfaces - F4
Troweled Surfaces - U2
3. CONCRETE STRENGTH : a. f_c = 40MPa
b. Stripping Strength (min) = 45MPa
4. DESIGN LOAD: a. 0.85 HN - Light Duty
b. HNHD 72 - Heavy Duty



Humes Pipeline Systems
Private Bag 92817
Auckland
Freephone 0800 502 112
www.humes.co.nz

Copyright: This design information and drawing remain the property of Humes Pipeline Systems and may not be used or copied without approval in writing from Humes Pipeline Systems.

CONCRETE DUCTING - SERIES 700

Revision	Rev. Date	Changes Made
----------	-----------	--------------

Drawn By Savinder Date 19-01-04

Checked By Scale A4 NTS

Reference No.

Drawing No

Rev. No

0