

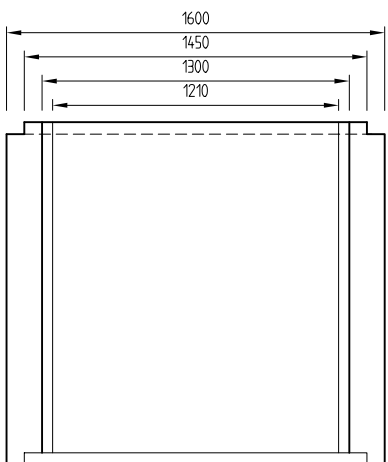
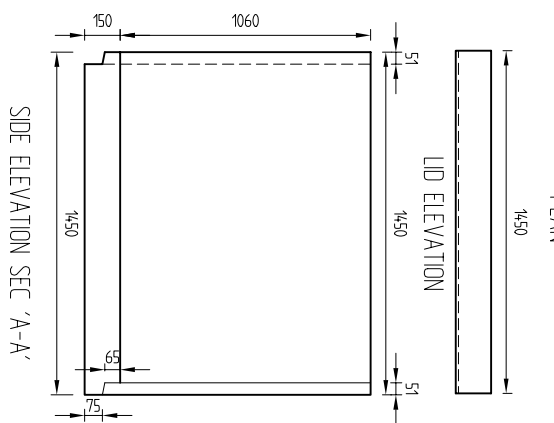
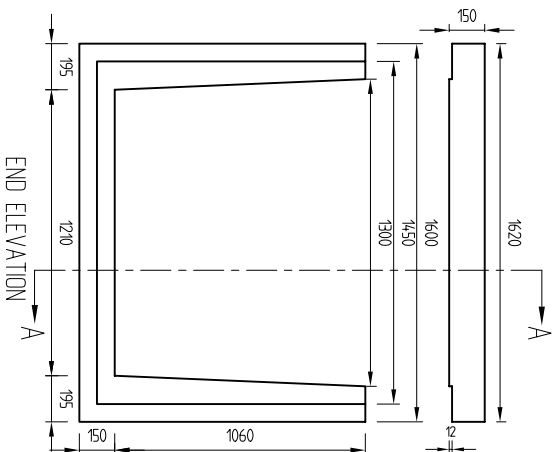
NOTES:

- ℓ = MIN LID LENGTH
- L = DUCT LENGTH
- R = 12 UNLESS OTHERWISE STATED
- f_c = 35 Mpa FOR LIGHT DUTY AND HEAVY DUTY DUCTS
- f_c = 40 Mpa FOR HEAVY DUTY LIDS

SPECIFICATIONS:

1. MANUFACTURE IN ACCORDANCE WITH NZS 3109:1997 (PRECAST UNITS)
2. SURFACE FINISHES TO NZS 3114:1987
Formed Surfaces - F4
Trowelled Surfaces - U2
3. CONCRETE STRENGTH : a f_c = 40MPa
b. Stripping Strength (min) = 15MPa
4. DESIGN LOAD: a. 0.85 HN - Light Duty
b. HNHD 72 - Heavy Duty

HEAVY DUTY - LIGHT DUTY



SERIES	1250	L	ℓ	W	w	H	h	S	T
LIGHT DUTY	1500	1500	1220	150	1060	150	1570	150	
HEAVY DUTY	1500	1500	1220	150	1060	150	1570	150	

Revision	Rev. Date	Changes Made



Humes Pipeline Systems
Private Bag 92817
Auckland
FreePhone 0800 502 112
www.humes.co.nz

Copyright: This design information and drawing remain the property of Humes Pipeline Systems and may not be used or copied without approval in writing from Humes Pipeline Systems.

CONCRETE DUCTING - SERIES 1250

Drawn By: Savinder Date: 19-01-04

Checked By: Scale: A4 NTS

Reference No.:

Drawing No.:

Rev. No. 0