

# Grease Traps maintain the flow of your drain



## Trade Waste Capture Devices

Grease traps are settling systems designed to trap grease and suspended sediments in industrial liquid waste streams. Generally, grease traps consist of a sump with baffles. They are used in mechanics' workshops, hotels, supermarkets and a wide range of other industrial activities.

**The New Zealand Building Code requires that: In buildings other than housing grease traps will be provided where wastewater is likely to contain grease.**

### Standard grease trap

Baffles in the trap slow down the wastewater flow and reduce turbulence allowing the grease and water to separate. The grease floats to the surface and is retained in the trap while the grease-free wastewater exits the grease trap into the sewer system. The grease trap needs to be accessible at any time.

### Features

- Captures and separates grease waste

### Benefits

- Reduces blockages of drains

### Applications

- Restaurants
- Hotels
- Takeaway shops
- Hospitals
- Bakeries
- Butcheries
- Supermarkets
- Mechanic's Workshops



# Grease Traps

## maintain the flow of your drain



### Installation

Humes Grease Traps are supplied with lids and internally fixed baffles, ready to be placed into the excavated ground and connected to the drainage system. External inlet and outlet pipes can be supplied by Humes but are sold separately.

### Maintenance

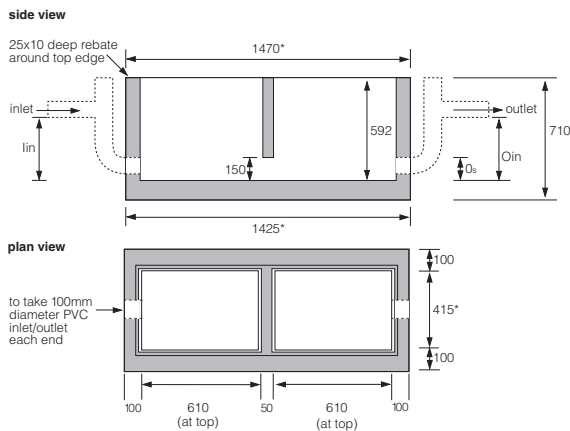
The load of pollutants and frequency of use can vary greatly with each application. Grease traps should be inspected at least every few days and cleaned out well before the pollutants reach the inlet/outlet level at the base of the unit. Failing to maintain the units regularly will result in the unit not working efficiently and can lead to blocking and flooding of the drainage system. All pollutants from the unit must be disposed of in accordance to local area authorities.

### Manufacturing standards

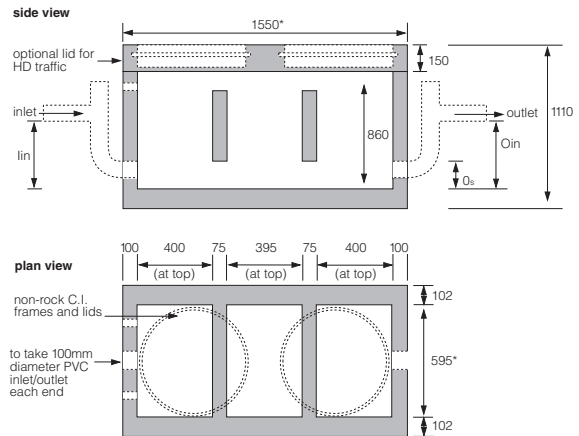
Precast manufacture is to NZS 3109:1997 with surface finishes to NZS 3114:1987, F4 and U2 for formed and trowelled respectively

For further details please contact your local Humes Sales Representative.

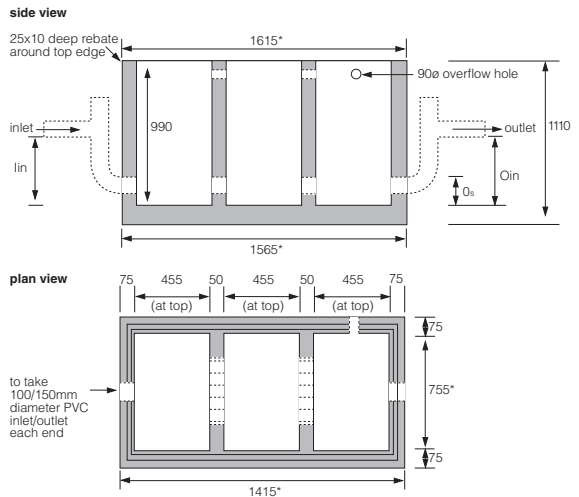
#### 117 litre Grease Trap



#### 222 – 353 litre Grease Trap



#### 425 litre Grease Trap



\*Walls have taper (not shown)

**Note:** Lids for all units can be designed to .85HN loading upon request

#### Basic model sizes and dimensions

| Item code | Capacity   | Weight | Chambers | Lid Type                              | Lid No. | Inlet Invert (lin) | Outlet Invert (Oin) | Outlet Soffit (Os) | Outside Height |
|-----------|------------|--------|----------|---------------------------------------|---------|--------------------|---------------------|--------------------|----------------|
| 04600     | 117 litre  | 770kg  | 2        | Chequer Plate Lids                    | 2       | 462                | 362                 | 150                | 710            |
| 04654     | 222 litre  | 1420kg | 3        | Concrete with Cast Iron Non-Rock Lids | 2       | 560                | 460                 | 150                | 1110 (inc lid) |
|           | 353 litre  | 1420kg | 3        | Concrete with Cast Iron Non-Rock Lids | 2       | 735                | 635                 | 150                | 1110 (inc lid) |
| 04601     | 425 litre  | 1500kg | 3        | Chequer Plate Lids                    | 3       | 690                | 590                 | 200                | 1110           |
| TBA       | 2150 litre | 3453kg | 3        | Concrete with Cast Iron Non-Rock Lids | 3       | 1250               | 1150                | 200                | 1785 (inc lid) |

All dimensions in mm.

**Note:** Refer to "Building Code G13/AS2 3.4 Grease Traps BIA" for plumbing configurations. Larger Grease Traps available upon request.

Disclaimer: Buyers and users of the products described in this brochure must make their own assessment of the suitability and appropriateness of the products for their particular use and the conditions in which they will be used. All queries regarding product suitability, purpose or installation should be directed to the nearest Humes Sales Centre for service and assistance. © Fletcher Concrete and Infrastructure Limited 2004.

